

Columbus Southern Power Company
 I.N. 199901040001060
 6.910 Ac.

RECEIVED

NOV 03 2008

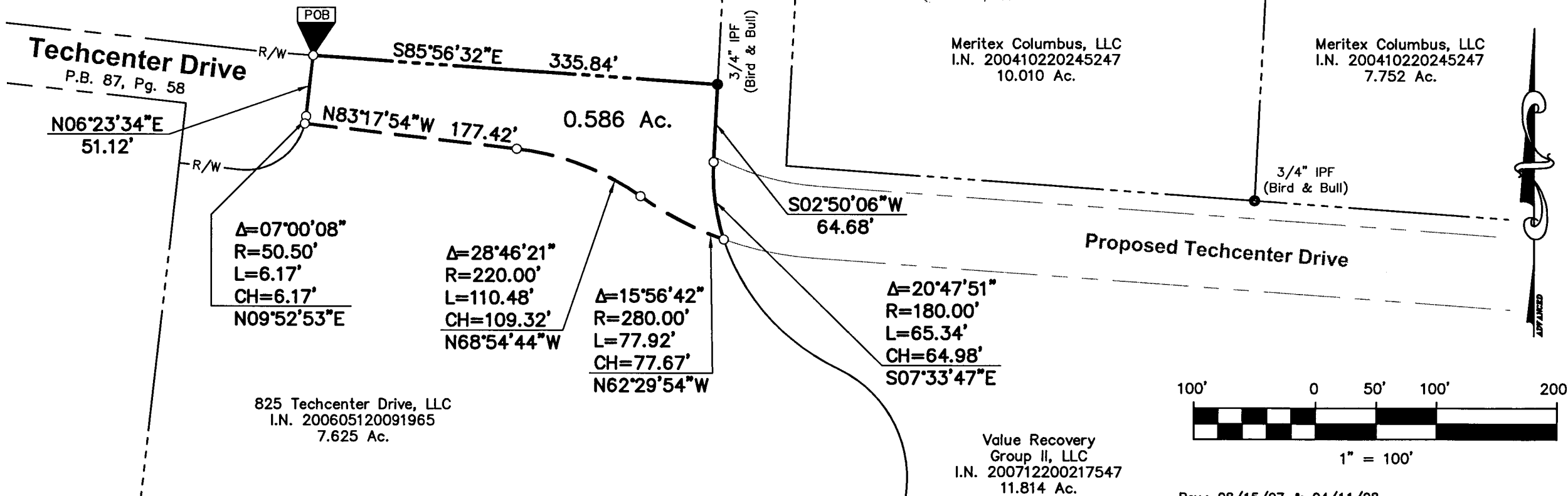
Franklin County Engineer
 Dean C. Ringle P.E., P.S.

SURVEY OF ACREAGE PARCEL

Quarter Township 3, Township 1, Range 16, USMD
 City of Gahanna, Franklin County, Ohio

Meritex Columbus, LLC
 I.N. 200410220245247
 10.010 Ac.

Meritex Columbus, LLC
 I.N. 200410220245247
 7.752 Ac.



Δ=07°00'08"
 R=50.50'
 L=6.17'
 CH=6.17'
 N09°52'53"E

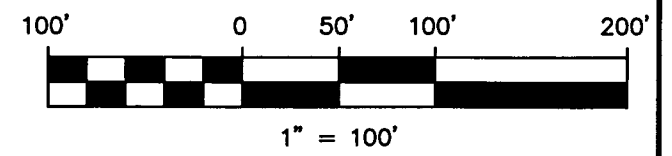
Δ=28°46'21"
 R=220.00'
 L=110.48'
 CH=109.32'
 N68°54'44"W

Δ=15°56'42"
 R=280.00'
 L=77.92'
 CH=77.67'
 N62°29'54"W

Δ=20°47'51"
 R=180.00'
 L=65.34'
 CH=64.98'
 S07°33'47"E

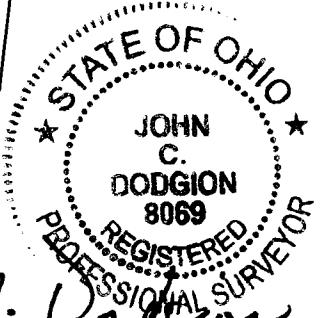
825 Techcenter Drive, LLC
 I.N. 200605120091965
 7.625 Ac.

Value Recovery
 Group II, LLC
 I.N. 200712200217547
 11.814 Ac.



Rev.: 08/15/07 & 04/11/08

DRAWN BY: JCD	JOB NO.: 07-0003-188
DATE: 07/23/07	CHECKED BY: DRH



John C. Dodgion 06/10/08
 John C. Dodgion, P.S. 8069

- Iron Rod Found
- Iron Pin Set
- ⊠ PK Nail Found
- ⊙ PK Nail Set
- ▲ RR Spike Found
- △ RR Spike Set
- Ⓜ Monument Box
- Ⓜ Monument

Iron pins set are 3/4" diameter, 30" long iron pipe with a plastic cap inscribed "Advanced 7661".

Bearings are based on the Ohio State Plane Coordinate System, NAD83 South Zone (1986 Adj.). A bearing of S 33° 55' 24" W was held between Franklin County Monuments FCGS 5524 and FCGS 1164 Reset.

ADVANCED
 CIVIL DESIGN
 ENGINEERS | SURVEYORS

422 Beecher Road
 Gahanna, Ohio 43230
 ph 614.428.7750
 fax 614.428.7755