

Date: September 25, 2008

Scale: 1" = 200'

Job No: 2008-1381



Evans, Mechwart, Hambleton & Tilton, Inc.
Engineers • Surveyors • Planners • Scientists
5500 New Albany Road, Columbus, OH 43054
Phone: 614.775.4500 Fax: 614.775.4800

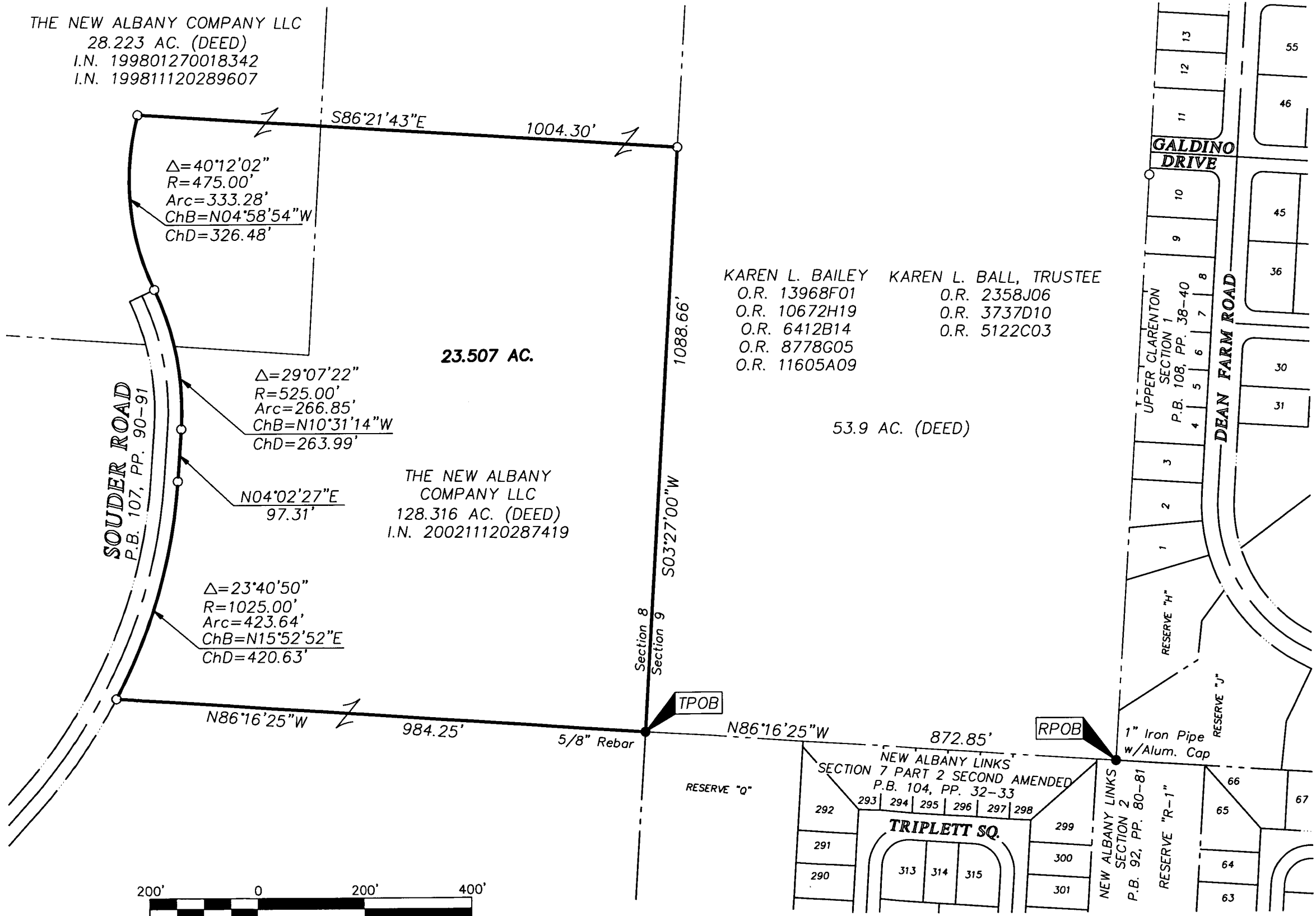
SURVEY OF ACREAGE TRACT

SECTIONS 8 & 9, QUARTER TOWNSHIP 1, TOWNSHIP 2, RANGE 16

UNITED STATES MILITARY LANDS

VILLAGE OF NEW ALBANY, COUNTY OF FRANKLIN, STATE OF OHIO

THE NEW ALBANY COMPANY LLC
28.223 AC. (DEED)
I.N. 199801270018342
I.N. 199811120289607



KAREN L. BAILEY O.R. 13968F01
O.R. 10672H19
O.R. 6412B14
O.R. 8778G05
O.R. 11605A09

KAREN L. BALL, TRUSTEE O.R. 2358J06
O.R. 3737D10
O.R. 5122C03

- = STONE FND.
- = MON. FND.
- = I.P. FND.
- = I.P. SET
- = MAG. NAIL FND.
- = MAG. NAIL SET
- ▲ = R.R. SPK. FND.
- △ = R.R. SPK. SET
- = P.K. NAIL FND.

I.P. Set are 13/16" I.D. iron pipes with cap inscribed EMHT INC

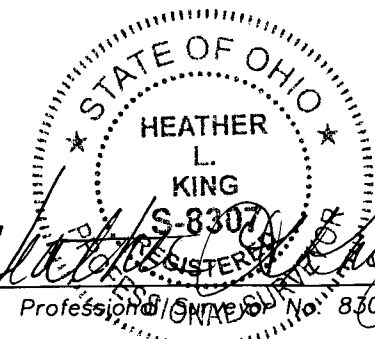
BASIS OF BEARINGS:
Bearings are based on the Ohio State Plane Coordinate System, South Zone, as per NAD83 (1986 adjustment). Control for bearings was from coordinates of monuments FRANK 80 and FRANK 180, having a bearing of North 85° 57' 24" West, as established by the Franklin County Engineering Department.

SURVEY NOTE:
This survey was prepared using documents of record, prior plats of survey, and observed evidence located by an actual field survey.

RECEIVED

SEP 26 2008

Franklin County Engineer
Dean C. Ringle, P.E., P.S.



By *[Signature]*
Professional Engineer No. 8307

