

PLAT OF SURVEY FOR  
0.067 ACRES

SITUATED IN THE STATE OF OHIO, COUNTY OF FRANKLIN,  
CITY OF GROVE CITY, BEING PART OF VIRGINIA MILITARY  
SURVEY NUMBER 469.

ACREAGE BREAKDOWN

0.067 ACRES OUT OF VMS NO. 469.  
0.067 ACRES OUT OF 34.114 ACRES.

NOTE

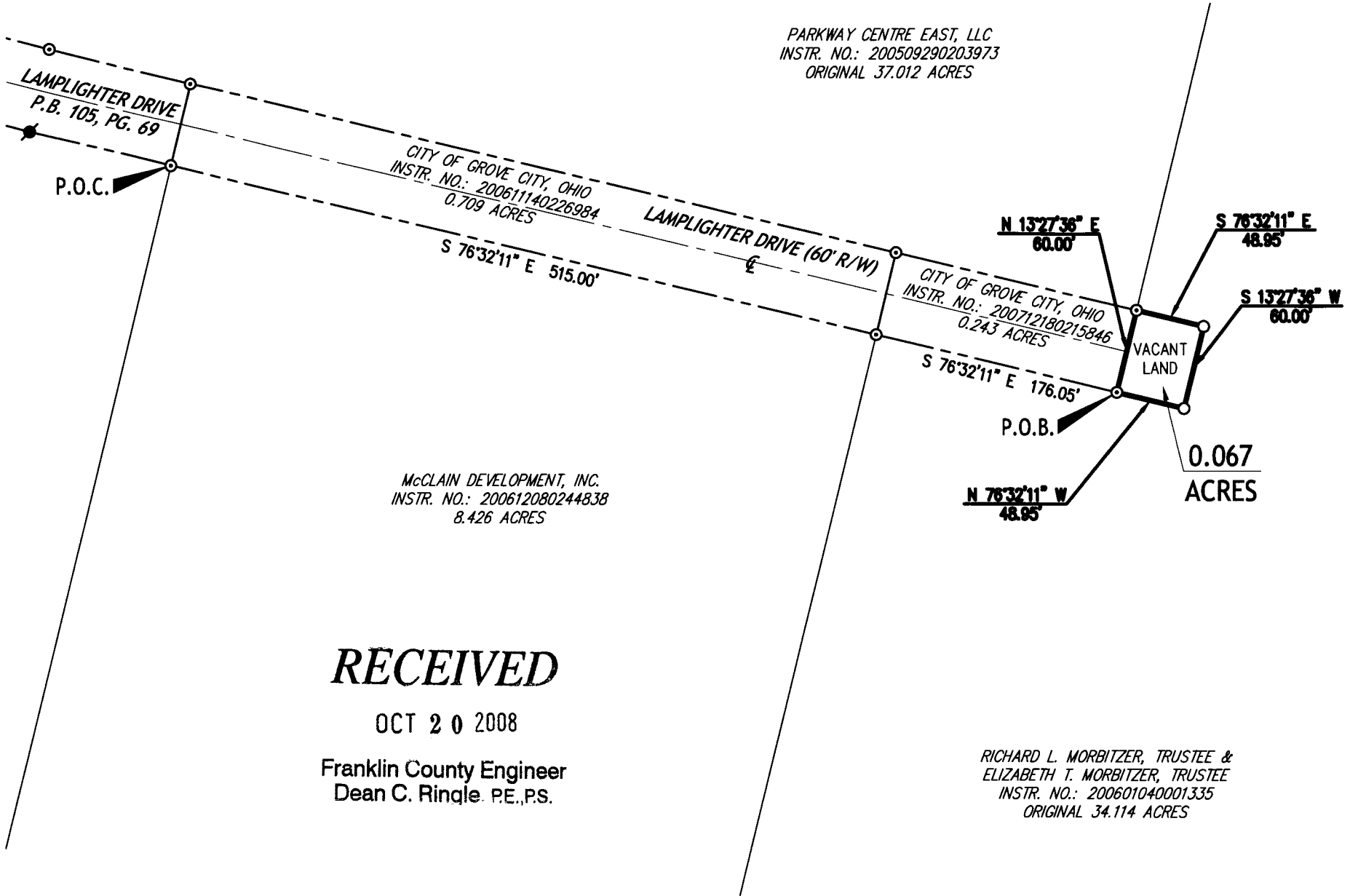
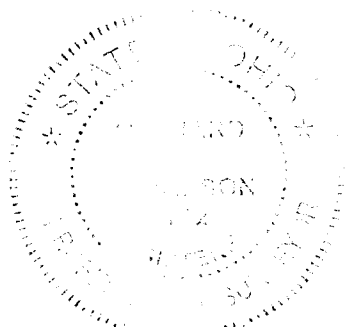
ALL IRON PINS SET ARE 5/8" SOLID IRON PINS 30"  
IN LENGTH WITH AN ORANGE PLASTIC CAP STAMPED  
"FLOYD BROWNE GROUP".

NOTE

ALL RECORD INFORMATION SHOWN HEREON WAS  
OBTAINED FROM THE RECORDER'S OFFICE,  
FRANKLIN COUNTY, OHIO.

BASIS OF BEARINGS

BEARINGS ARE BASED ON DATA ACQUIRED BY GPS  
OBSERVATIONS AS PER NAD 83 (1986)-OHIO STATE PLANE  
COORDINATE SYSTEM-SOUTH ZONE FROM THE FRANKLIN COUNTY  
GEODETIC CONTROL MONUMENTS FRANK 25 AND FCGS 0025  
HAVING A BEARING OF SOUTH 79°41'09" EAST BETWEEN THEM.



RECEIVED

OCT 20 2008

Franklin County Engineer  
Dean C. Ringle, P.E., P.S.

RICHARD L. MORBITZER, TRUSTEE &  
ELIZABETH T. MORBITZER, TRUSTEE  
INSTR. NO.: 200601040001335  
ORIGINAL 34.114 ACRES

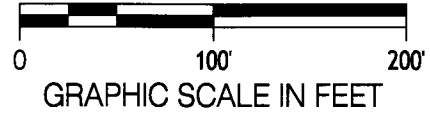
I HEREBY STATE THAT THIS SURVEY IS BASED ON ACTUAL FIELD MEASUREMENTS  
AND TO THE BEST OF MY KNOWLEDGE AND BELIEF IS CORRECT.

*Maynard H. Thompson*  
MAYNARD H. THOMPSON, P.S.  
PROFESSIONAL SURVEYOR NO. 7128

1/16/08  
DATE

LEGEND

- IRON PIN FND ●
- IRON PIPE FND ⊙
- MAG NAIL FND ●
- IRON PIN SET ○



PAGE 2 OF 2  
DRAWN BY: DBP  
CHECKED BY: MHT

FILE NO. PLAT 08-00105 (0.067 AC)

Central Ohio  
740.363.6792  
740.363.6536 fax  
800.325.7647

Solutions for Your World  
www.FloydBrowne.com