

PLAT OF SURVEY FOR
1.498 ACRES

SITUATED IN THE STATE OF OHIO, COUNTY OF FRANKLIN, CITY OF GROVE CITY,
BEING PART OF VIRGINIA MILITARY SURVEY NUMBER 469.

ACREAGE BREAKDOWN

1.498 ACRES OUT OF VMS NO. 469.
1.498 ACRES OUT OF 34.114 ACRES.

NOTE

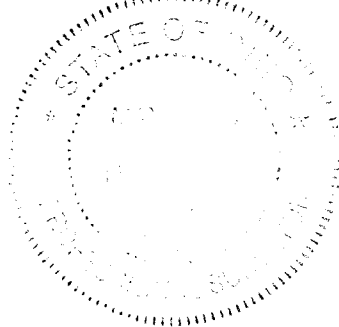
ALL IRON PINS SET ARE 5/8" SOLID IRON PINS 30"
IN LENGTH WITH AN ORANGE PLASTIC CAP STAMPED
"FLOYD BROWNE GROUP".

NOTE

ALL RECORD INFORMATION SHOWN HEREON WAS
OBTAINED FROM THE RECORDER'S OFFICE,
FRANKLIN COUNTY, OHIO.

BASIS OF BEARINGS

BEARINGS ARE BASED ON DATA ACQUIRED BY GPS
OBSERVATIONS AS PER NAD 83 (1986)-OHIO STATE PLANE
COORDINATE SYSTEM-SOUTH ZONE FROM THE FRANKLIN COUNTY
GEODETIC CONTROL MONUMENTS FRANK 25 AND FCGS 0025
HAVING A BEARING OF SOUTH 79°41'09" EAST BETWEEN THEM.



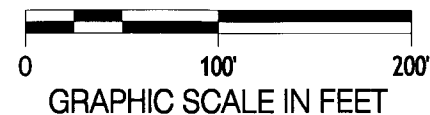
I HEREBY STATE THAT THIS SURVEY IS BASED ON ACTUAL FIELD MEASUREMENTS
AND TO THE BEST OF MY KNOWLEDGE AND BELIEF IS CORRECT.

[Signature]
MAYNARD H. THOMPSON, P.S.
PROFESSIONAL SURVEYOR NO. 7128

DATE 10/2/08

LEGEND

- IRON PIN FND ●
- IRON PIPE FND ⊙
- MAG NAIL FND ●
- IRON PIN SET ○

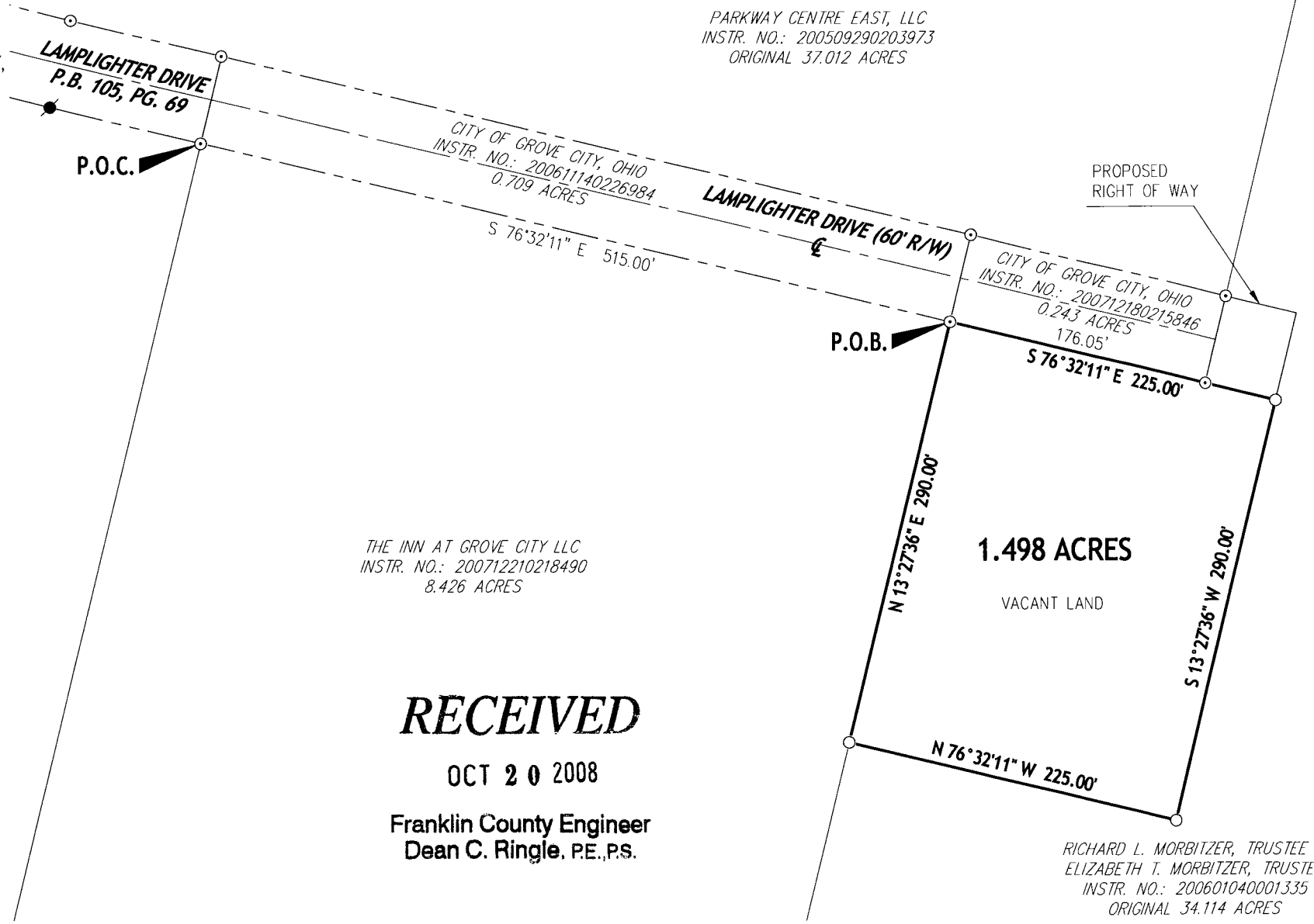


PAGE 2 OF 3
DRAWN BY: DBP
CHECKED BY: MHT

FILE NO. PLAT 08-00105 (1_498 AC)

Central Ohio
740.363.6792
740.363.6536 fax
800.325.7647

Solutions for Your World
www.FloydBrowne.com



THE INN AT GROVE CITY LLC
INSTR. NO.: 200712210218490
8.426 ACRES

PARKWAY CENTRE EAST, LLC
INSTR. NO.: 200509290203973
ORIGINAL 37.012 ACRES

CITY OF GROVE CITY, OHIO
INSTR. NO.: 200712180215846
0.243 ACRES
176.05'

PROPOSED
RIGHT OF WAY

RECEIVED
OCT 20 2008
Franklin County Engineer
Dean C. Ringle, P.E., P.S.

RICHARD L. MORBITZER, TRUSTEE &
ELIZABETH T. MORBITZER, TRUSTEE
INSTR. NO.: 200601040001335
ORIGINAL 34.114 ACRES