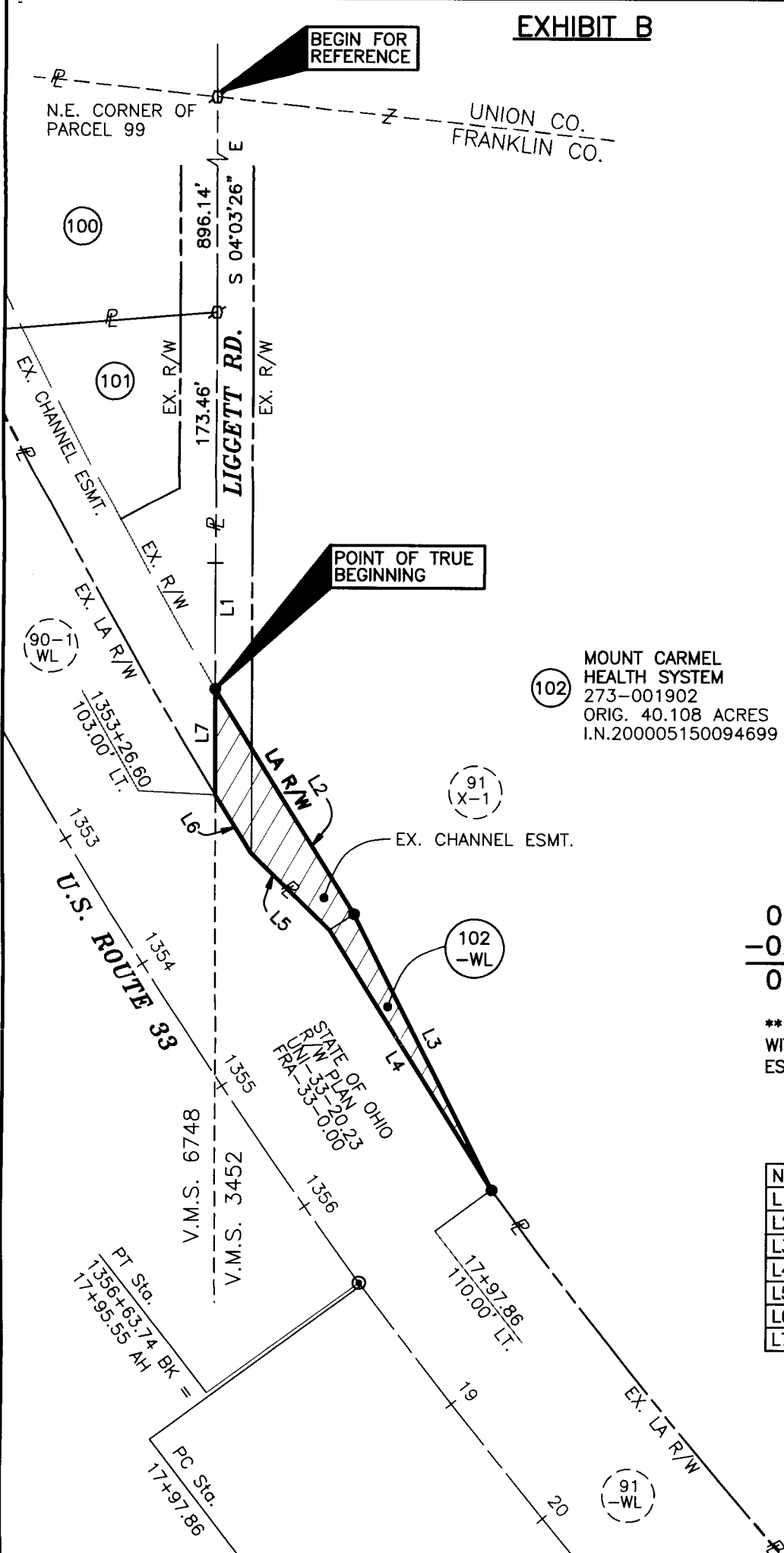


**EXHIBIT B**



- 99 THE POST-HYLANDS CO.  
273-001905  
5.328 ACRES  
I.N. 200703300055576
- 100 DENNIS J. HOFFER  
273-001894  
2.009 ACRES  
I.N. 199809240243034
- 101 THE CITY OF DUBLIN, OHIO  
273-001907  
0.685 ACRES  
OR 6769, PG. B07



102 MOUNT CARMEL HEALTH SYSTEM  
273-001902  
ORIG. 40.108 ACRES  
I.N. 200005150094699

0.165 ACRES (GROSS)  
-0.042 ACRES (P.R.O.)  

---

0.123 ACRES (NET)

\*\* 0.116 ACRES CONTAINED WITHIN THE EXIST. CHANNEL ESMT. (91 X-1)

NUMBER	DIRECTION	DISTANCE
L1	S 04°12'19" E	86.22'
L2	S 35°47'23" E	181.02'
L3	S 30°35'40" E	211.32'
L4	N 36°01'27" W	209.97'
L5	N 49°44'57" W	74.81'
L6	N 35°42'46" W	47.13'
L7	N 04°12'19" W	72.51'

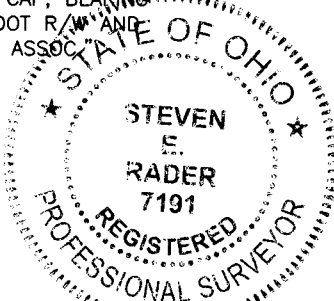
**MONUMENT LEGEND**

- ⊠ R.R.S. FOUND
- ◇ REBAR FOUND
- IRON PIN FOUND
- ⊙ R/W MONUMENT FD
- 3/4" IRON PIN SET

IRON PINS SET ARE 3/4" DIAMETER BY 30" LONG WITH AN ALUMINUM CAP, BEARING THE NAME "ODOT R/W" AND R.D. ZANDE & ASSOC.

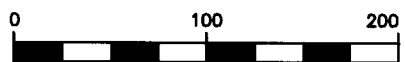
**BASIS OF BEARINGS**

THE BEARINGS FOR THE UNI-33-24.87 PROJECT ARE BASED UPON STATE PLANE GRID BEARINGS FROM THE OHIO COORDINATE SYSTEM, SOUTH ZONE, NAD 83 (86), AS MEASURED USING G.P.S. METHODS THROUGH THE FRANKLIN COUNTY ENGINEER'S STATIONS "FRANK 72", "FRANK 172", "FCGS 5536", AND "FCGS 5534".



**PARCEL 102-WL  
UNI-33-24.87**

CITY OF DUBLIN, FRANKLIN COUNTY, OHIO  
VIRGINIA MILITARY SURVEY 3452



SCALE IN FEET  
Prepared By



Stantec Consulting Services, Inc.  
(formerly R.D. Zande & Associates, Inc.)  
1500 Lake Shore Drive, Suite 100  
Columbus, Ohio 43204  
Phone: (614) 486-4383

**Stantec**

*Steven E. Rader* 4/30/08  
Registered Surveyor #7191 Date