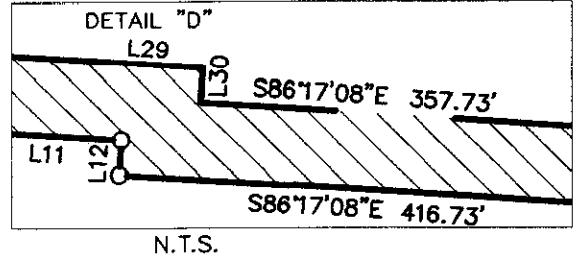
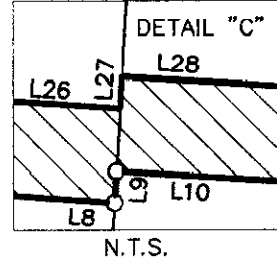
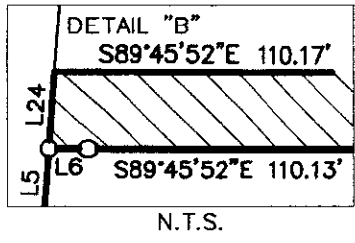
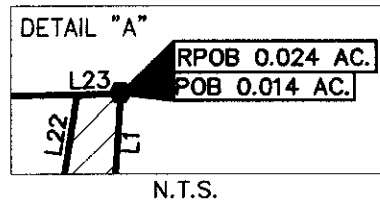


SURVEY OF ACREAGE TRACT SECTION 16, TOWNSHIP 5, RANGE 22 REFUGEE LANDS CITY OF COLUMBUS, FRANKLIN COUNTY, OHIO



LINE	BEARING	DISTANCE
L1	S03°33'23"W	18.85'
L2	S89°02'32"W	24.66'
L3	N24°02'36"E	46.64'
L4	N08°50'14"E	89.78'
L5	N04°14'32"E	18.80'
L6	N89°49'35"E	0.20'
L7	N03°42'53"E	5.00'
L8	S86°04'41"E	20.92'
L9	N03°33'23"E	0.74'
L10	S86°26'37"E	50.00'
L11	S86°17'08"E	13.99'
L12	S03°40'38"W	1.80'
L13	N46°23'22"E	28.53'
L14	N76°56'31"W	19.77'
L15	N03°33'23"E	62.30'
L16	N52°28'28"E	25.87'
L17	N03°33'23"E	59.53'
L18	N08°50'21"E	74.73'
L19	N24°02'36"E	37.23'
L20	S89°02'32"W	4.41'
L21	N24°02'36"E	47.97'
L22	N08°50'14"E	107.63'
L23	N89°02'32"E	2.30'
L24	N04°14'32"E	4.01'
L25	N03°42'52"E	5.01'
L26	S86°04'41"E	24.90'
L27	N03°33'23"E	0.74'
L28	S86°26'37"E	50.01'
L29	S86°17'08"E	17.99'
L30	S03°40'38"W	1.80'
L31	N03°42'52"E	10.00'
L32	S86°17'08"E	62.47'
L33	N46°23'22"E	11.42'
L34	N76°56'31"W	19.77'
L35	N52°28'28"E	25.87'
L36	N03°33'23"E	57.89'
L37	N08°50'21"E	75.45'
L38	N24°02'36"E	35.90'

CURVE	DELTA	RADIUS	ARC	CH BRG	CH
C1	90°09'29"	25.00'	39.34'	N48°38'07"E	35.40'

NOTE:
Occupation, in general, fits survey.

SURVEY NOTE:
This survey was prepared using documents of record, prior plats of survey, and observed evidence located by an actual field survey.

BASIS OF BEARINGS: Bearings are based on the Ohio State Plane Coordinate System, South Zone, per NAD83 (1986 Adjustment). Control for bearings was from coordinates of monuments Frank 43 & Frank 143, having a bearing of South 87° 56' 16" East, established by the Franklin County Engineering Department.

RECEIVED
SEP 11 2008
Franklin County Engineer
Dean C. Ringle, PE, PS.

- = STONE FND.
 - = MON. FND.
 - = I.P. FND.
 - = I.P. SET
 - = MAG. NAIL FND.
 - = MAG. NAIL SET
 - ▲ = R.R. SPK. FND.
 - △ = R.R. SPK. SET
 - ◆ = P.K. NAIL FND.
- I.P. SET ARE 13/16" I.D. IRON OF OHIO PIPES WITH CAP INSCRIBED EMHT-INC.

By Professional Surveyor No. 8250

Evans, Mechwart, Hambleton & Tilton, Inc.
Engineers • Surveyors • Planners • Scientists
5500 New Albany Road, Columbus, OH 43054
Phone: 614.775.4500 Fax: 614.775.4800

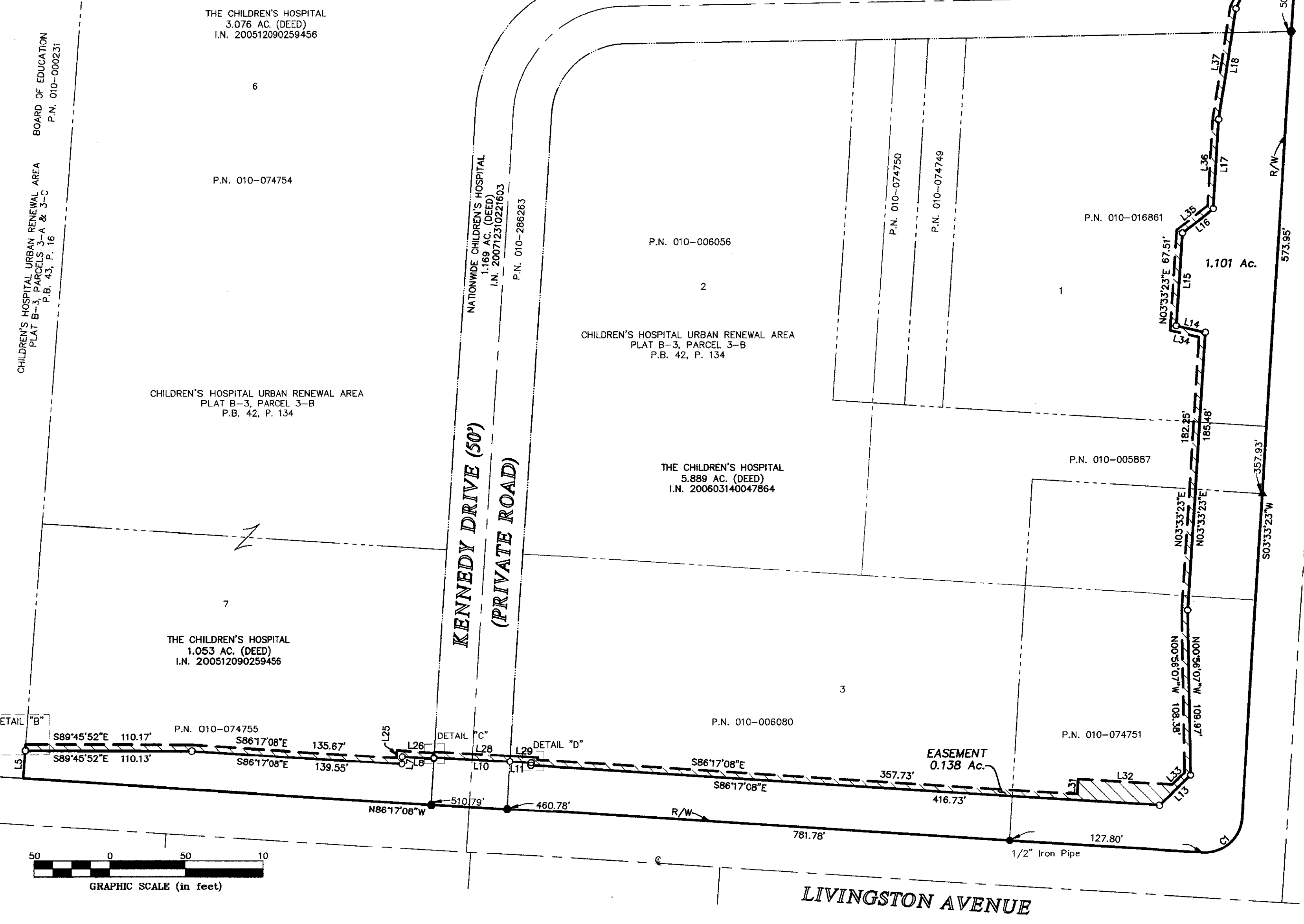
Date: September 9, 2008

Scale: 1" = 50'

Job No: 2008-0121

Sheet: 1 of 1

REVISIONS		
MARK	DATE	DESCRIPTION



\\CHM\DATA01\SURVEY\PROJECT\20080121\DWG\80121RA1.DWG<18X24 LANDSCAPE> - 2 XREFS: 80121XRW, 80121BC - LAST SAVED BY SGEIGER [9/10/2008 10:15:44 AM] - PLOTTED BY SGEIGER [9/10/2008 1:13:38 PM]