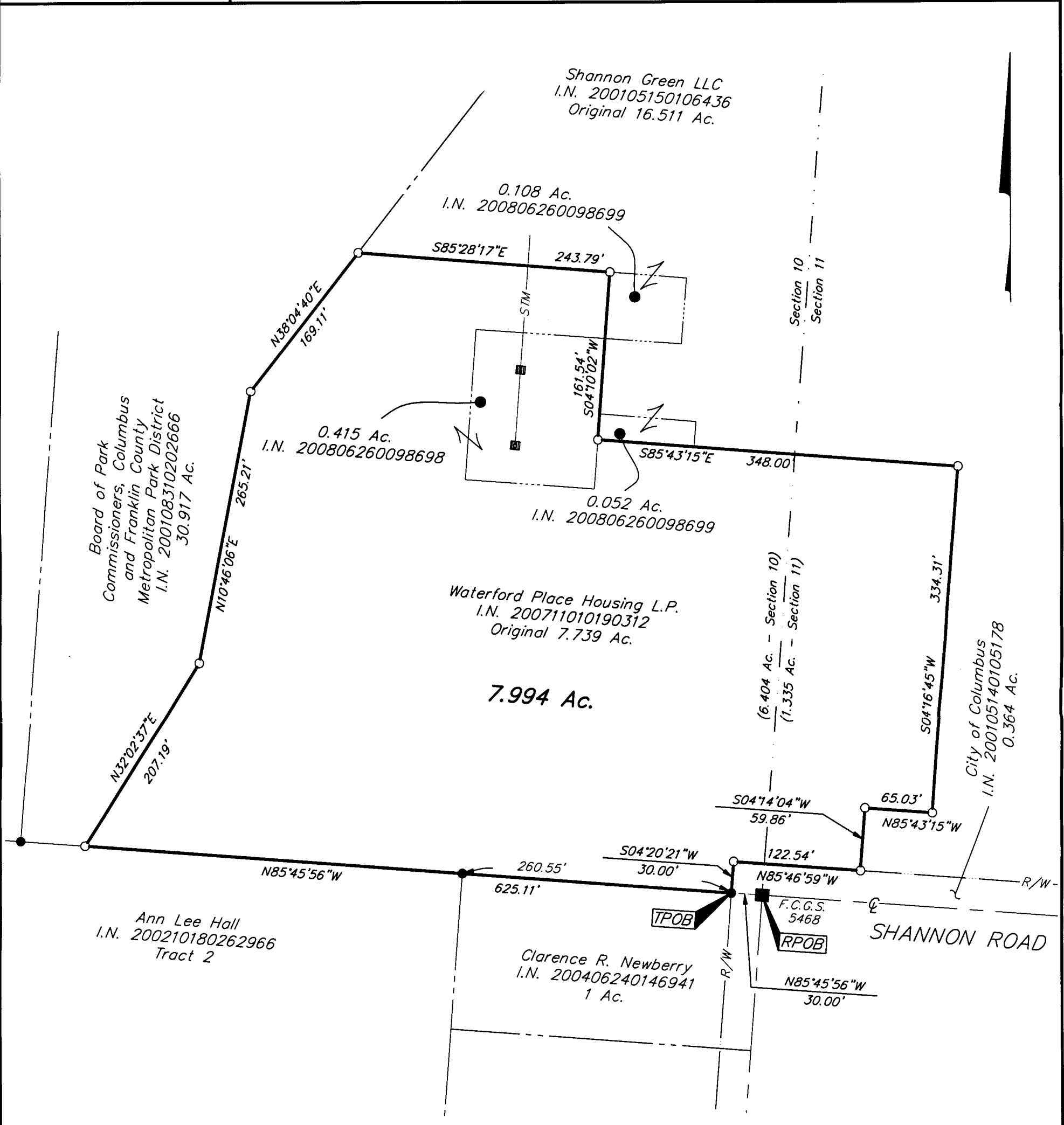


K 8 B E

EMH&T
 Evans, Mechwart, Hambleton & Tilton, Inc.
 Engineers • Surveyors • Planners • Scientists
 5500 New Albany Road, Columbus, OH 43054
 Phone: 614.775.4500 Fax: 614.775.4800

**SURVEY OF ACREAGE TRACT
 SECTIONS 10 & 11, TOWNSHIP 11, RANGE 21
 CONGRESS LANDS EAST OF SCIOTO RIVER
 CITY OF COLUMBUS, FRANKLIN COUNTY, OHIO**

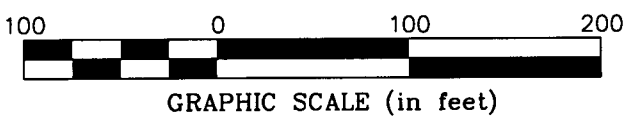
Date: September 4, 2008
 Scale: 1" = 100'
 Job No: 2007-2025



- = STONE FND.
- = MON. FND.
- = 3/4" I.P. FND.
- = I.P. SET
- = MAG. NAIL FND.
- = MAG. NAIL SET
- ▲ = R.R. SPK. FND.
- △ = R.R. SPK. SET
- ◆ = P.K. NAIL FND.

I.P. Set are 13/16" I.D. iron pipe with cap inscribed EMHT INC

BASIS OF BEARINGS:
 Bearings are based on North 85° 46' 59" West for the centerline of Shannon Road between Franklin County Engineer Monuments FCGS 5380 & FCGS 5468 per the Ohio State Plane Coordinate System, NAD83, South Zone (1986 adjustment).



RECEIVED

SEP 05 2008

Franklin County Engineer
 Dean C. Ringle, P.E., P.S.

By *[Signature]*
 Heather L. King
 S-8307
 Professional Surveyor
 STATE OF OHIO
 PROFESSIONAL SURVEYOR

\\CMHDATA01\SURVEY\PROJECT\20072025\DWG\22025BV3.DWG-11X17 PORTRAIT CANNON - NO XREFS - LAST SAVED BY TWEBB [9/4/2008 9:57:24 AM] - PLOTTED BY TWEBB [9/4/2008 9:58:49 AM]