

# BAUER, DAVIDSON & MERCHANT, INC.

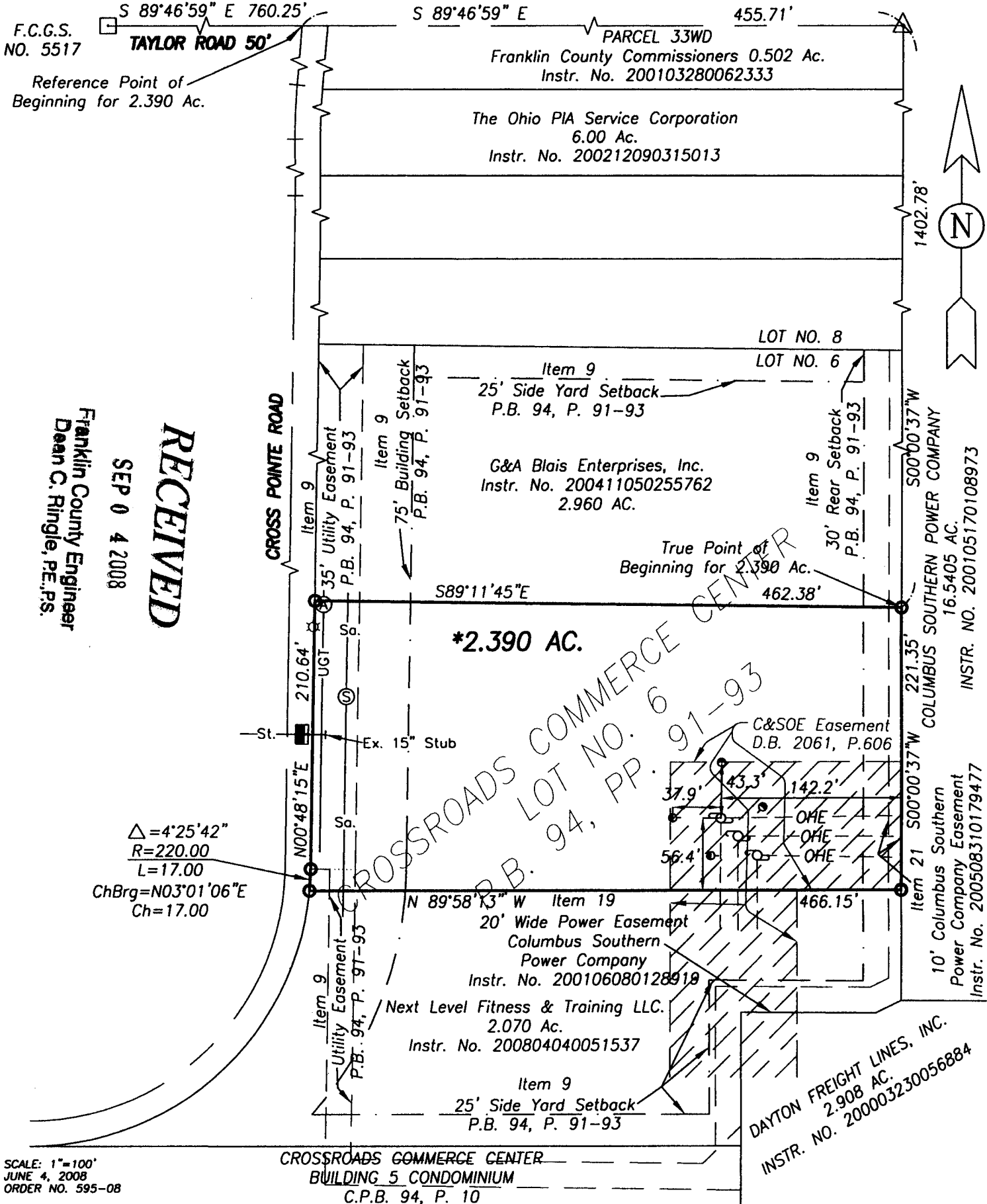
CONSULTING ENGINEERS

255 GREEN MEADOWS DRIVE SOUTH LEWIS CENTER, OHIO 43035

PHONE: 614-846-3393

FAX: 614-846-4575

## BOUNDARY SURVEY OF A 2.390 ACRE TRACT OF LAND LOCATED SOUTH OF TAYLOR ROAD AND EAST OF CROSS POINTE ROAD, IN THE CITY OF GAHANNA, COUNTY OF FRANKLIN, STATE OF OHIO



Situated in the State of Ohio, County of Franklin, City of Gahanna, being in Lots No. 20 and 21 of Section 3, Township 1, Range 16, United States Military Lands, containing 2.390 acres of land, more or less, said 2.390 acres being part of Lot 6, as the same is numbered and delineated upon the record plat of Crossroads Commerce Center, of record in Plat Book 94, Pages 91, 92 and 93, of record in the Recorder's Office, Franklin County, Ohio.

We hereby state that the above map was prepared from information obtained from actual field surveys conducted by Bauer, Davidson & Merchant, Inc. in May of 2008.

The bearings shown on this map are based on the bearing of S 89°46'59" E as given for the southerly right-of-way line of Taylor Road, of record in Instrument No. 200002240037180, Recorder's Office, Franklin County, Ohio.

### LEGEND

- ⊙ = Sanitary Manhole
- ⊕ = Power pole
- ⊖ = Guy wire
- ⊙ = Ameritech Manhole
- UGT — = Underground Telephone
- OHE — = Overhead Electric
- ⊙ = IPF = 3/4" iron pipe found
- ⊙ = IPS = 3/4" iron pipe set with a plastic cap in top inscribed B.D.M.#1
- ⊙ = PKF = Concrete nail found
- ⊙ = MON = Franklin County Geodetic Survey Monument No. 5517

**BAUER, DAVIDSON & MERCHANT, INC.**  
CONSULTING ENGINEERS

BY *Robert B. Stover*  
Robert B. Stover  
Professional Surveyor No. 7224  
JUNE 4, 2008

H:\Dwg 08\59508\59508.dwg ID #05