

EMHT

Evans, Mechwart, Hambleton & Tilton, Inc.
 Engineers • Surveyors • Planners • Scientists
 5500 New Albany Road, Columbus, OH 43054
 Phone: 614.775.4500 Fax: 614.775.4800

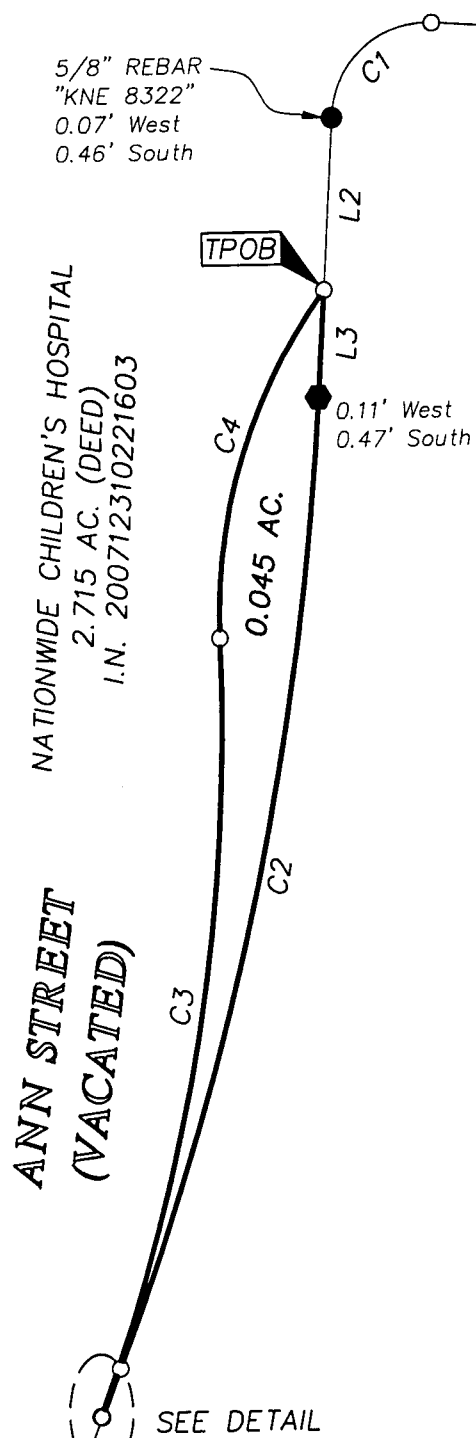
SURVEY OF ACREAGE TRACT SECTION 15, TOWNSHIP 5, RANGE 22 REFUGEE LANDS CITY OF COLUMBUS, FRANKLIN COUNTY, OHIO

DATE: JUNE 23, 2008

JOB NO. 2007-1938

SCALE: 1" = 40'

M C M X X V I



CHILDREN'S HOSPITAL
 URBAN RENEWAL AREA
 PLAT A
 P.B. 43, P. 17

CITY OF COLUMBUS
 D.B. 2573, P. 666
 D.B. 2549, P. 10
 D.B. 2542, P. 207
 D.B. 2526, P. 282
 D.B. 2615, P. 270
 D.B. 2615, P. 272
 D.B. 2638, P. 380
 D.B. 2515, P. 1
 D.B. 2638, P. 386
 D.B. 2613, P. 221
 D.B. 2571, P. 184

LINE TABLE		
LINE	BEARING	DISTANCE
L1	N86°12'15"W	114.88'
L2	S03°27'45"W	36.30'
L3	S03°27'45"W	21.90'
L4	S21°07'51"W	10.67'
L5	N68°56'45"W	0.33'

CURVE TABLE					
CURVE	DELTA	RADIUS	ARC	CH BRG	CH
C1	90°20'00"	20.00'	31.53'	S48°37'45"W	28.37'
C2	17°40'06"	666.62'	205.57'	S12°17'48"W	204.75'
C3	22°43'48"	411.50'	163.25'	N09°25'54"E	162.18'
C4	38°41'58"	113.50'	76.66'	N17°24'59"E	75.21'

BASIS OF BEARINGS:
 BEARINGS ARE BASED ON THE OHIO STATE PLANE COORDINATE SYSTEM, SOUTH ZONE, PER NAD83 (1986 ADJUSTMENT). CONTROL FOR BEARINGS WAS FROM COORDINATES OF MONUMENTS FRANK 43 & FRANK 143, HAVING A BEARING OF SOUTH 87° 56' 16" EAST, ESTABLISHED BY THE FRANKLIN COUNTY ENGINEERING DEPARTMENT.


SURVEY NOTE:
 THIS SURVEY WAS PREPARED USING DOCUMENTS OF RECORD, PRIOR PLATS OF SURVEY, AND OBSERVED EVIDENCE LOCATED BY AN ACTUAL FIELD SURVEY.

RECEIVED
 SEP 02 2008
 Franklin County Engineer
 Dean C. Ringler, P.E., P.S.

- = I.P. FND.
- = I.P. SET
- = MAG. NAIL FND.

I.P. SET ARE 13/16" I.D. IRON PIPES WITH CAP INSCRIBED EMHT INC.



By 
 PROFESSIONAL SURVEYOR NO. 8250



GRAPHIC SCALE (in feet)

\\CMHDATA1\SURVEY\PROJECT\20071938\DWG\71938BV.DWG<LEGAL PORTRAIT> - NO XREFS - LAST SAVED BY TWEBB [6/23/2008 10:11:34 AM] - PLOTTED BY TWEBB [6/23/2008 10:11:34 AM]