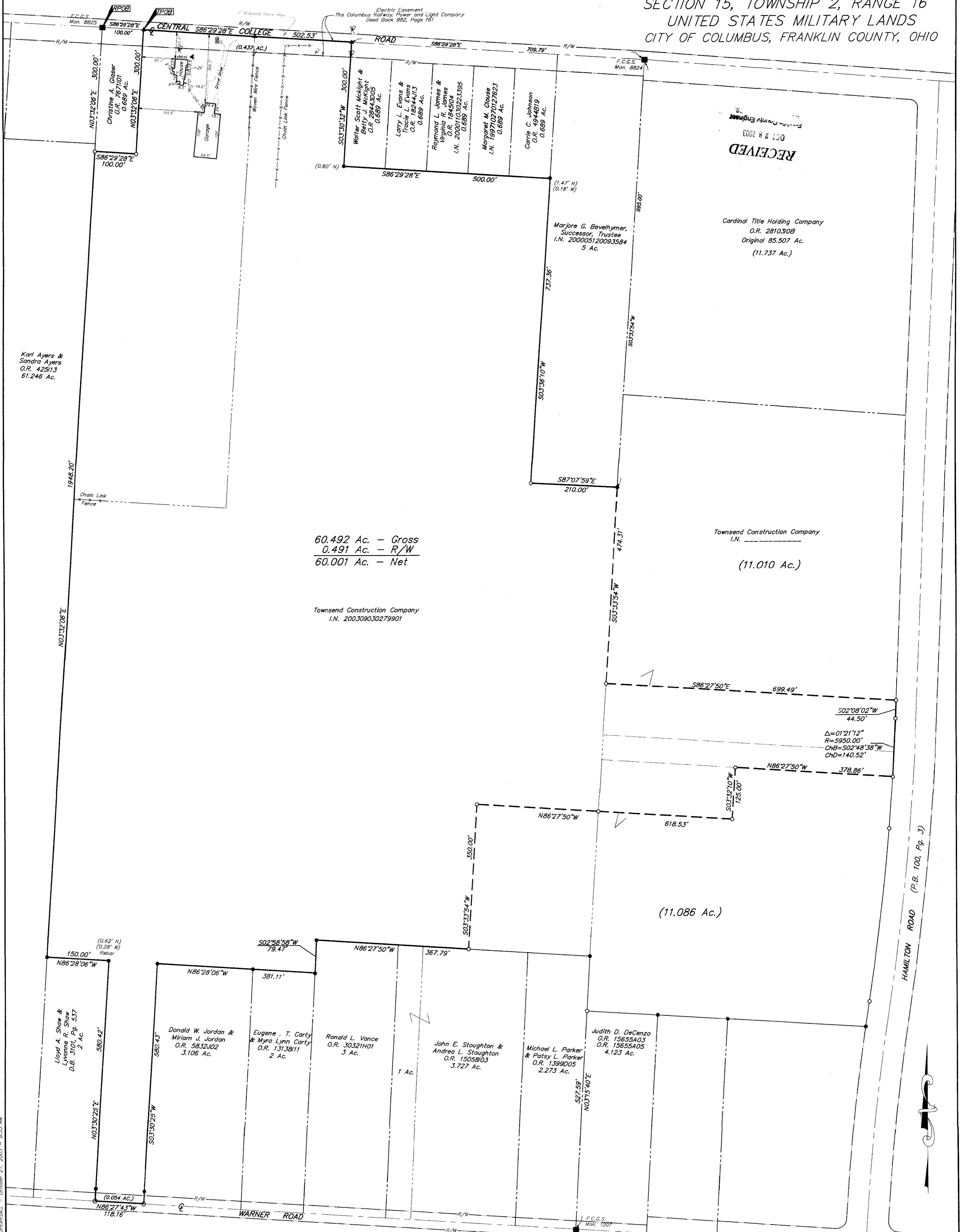


SURVEY OF ACREAGE PARCELS
SECTION 15, TOWNSHIP 2, RANGE 16
UNITED STATES MILITARY LANDS
CITY OF COLUMBUS, FRANKLIN COUNTY, OHIO



RECEIVED
 OCT 28 2003
 Franklin County Engineer

Cardinal Title Holding Company
 O.R. 2810308
 Original 85.507 Ac.
 (11.737 Ac.)

60.492 Ac. - Gross
 0.491 Ac. - R/W
 60.001 Ac. - Net

Townsend Construction Company
 I.N. 200309030279901

Townsend Construction Company
 I.N. _____
 (11.010 Ac.)

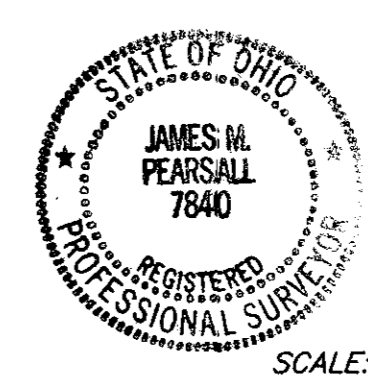
(11.086 Ac.)

HAMILTON ROAD (P.B. 100, Pg. 3)

RECEIVED
 OCT 28 2003
 Franklin County Engineer
 Dean C. Ringle, P.E., P.S.

Surveyed & Prepared By

EMHT INC.
 ENGINEERS, SURVEYORS, PLANNERS, SCIENTISTS
 EVANS, MECHWART, HAMBLETON & TILTON, INC.
 170 MILL STREET, GAHANNA, OHIO 43230-3036
 TEL: 614-471-5150 • FAX: 614-471-9286

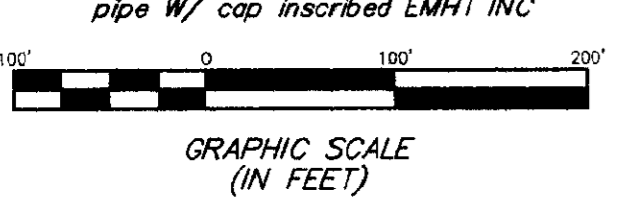


James M. Pearsall 10/28/03
 Professional Surveyor No. 7840
 DATE: October 28, 2003

SCALE: 1" = 100' DOMINION HOMES / CARDINAL TITLE PROPERTY / 20031436 / 31436EX

- = STONE FND.
- = MON. FND.
- = I.P. FND.
- = I.P. SET
- = MAG. NAIL FND.
- = MAG. NAIL SET
- ▲ = R.R. SPK. FND.
- ▲ = R.R. SPK. SET
- = P.K. NAIL FND.

I.P.S. Set are 1 3/16" I.D. Iron pipe w/ cap inscribed EMHT INC



BASIS OF BEARINGS: Bearings are based on the Ohio State Plane Coordinate System as per NAD83. Control for bearings was from coordinates of monuments 8824 & 8825, having a bearing of North 86° 29' 28" West, established by the Franklin County Engineering Department, using Global Positioning System procedures and equipment.

0:\PROJECT\20031436\DRAWING - 0:AREAS - PLOTTED BY: JPEARSALL - October 21, 2003 - 8:53 AM