

I6C

EMH&T

Evans, Mechwart, Hambleton & Tilton, Inc.
Engineers • Surveyors • Planners • Scientists
5500 New Albany Road, Columbus, OH 43054
Phone: 614.775.4500 Fax: 614.775.4800

M C M X X V I

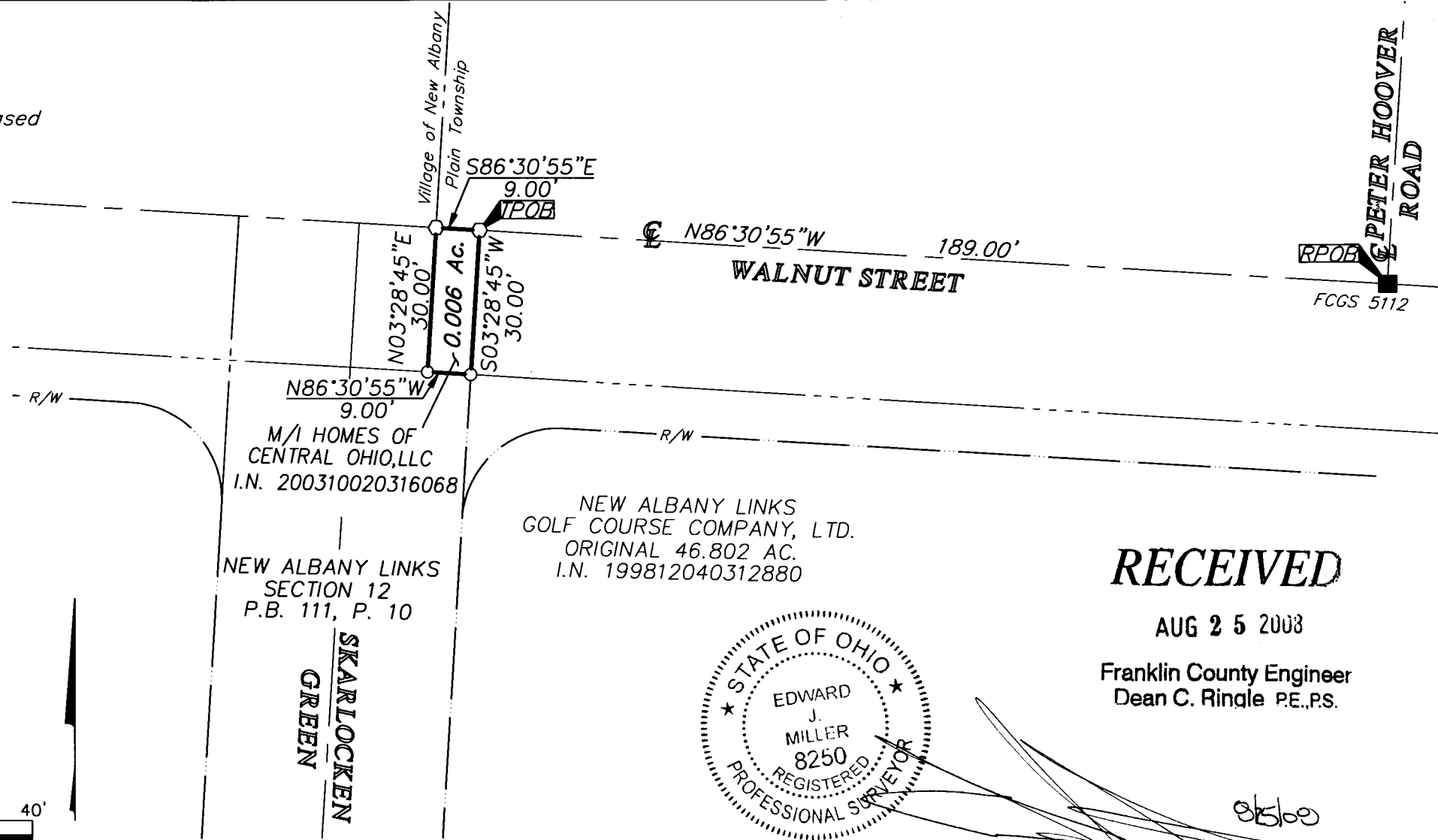
SURVEY OF ACREAGE PARCEL SECTION 9, QUARTER TOWNSHIP 1, TOWNSHIP 2, RANGE 16 UNITED STATES MILITARY LANDS VILLAGE OF NEW ALBANY, FRANKLIN COUNTY, OHIO

Date: August 18, 2008

Scale: 1" = 30'

Job No: 2004-1570

BASIS OF BEARINGS: Bearings are based on the Ohio State Plane Coordinate System as per NAD83. Control for bearings was from coordinates of monuments 2206 & 2207, having a bearing of North 03° 23' 06" East, established by the Franklin County Engineering Department, using Global Positioning System procedures and equipment.



- = STONE FND.
- = MON. FND.
- = I.P. FND.
- = I.P. SET
- ◆ = MAG. NAIL FND.
- ◇ = MAG. NAIL SET
- ▲ = R.R. SPK. FND.
- △ = R.R. SPK. SET
- ◆ = P.K. NAIL FND.

I.P. Set are 13/16" I.D. iron pipe with cap inscribed EMHT INC

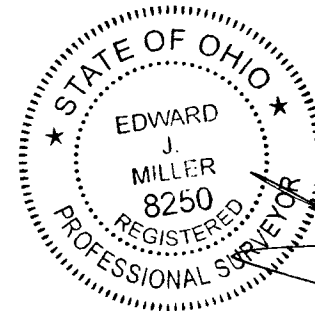


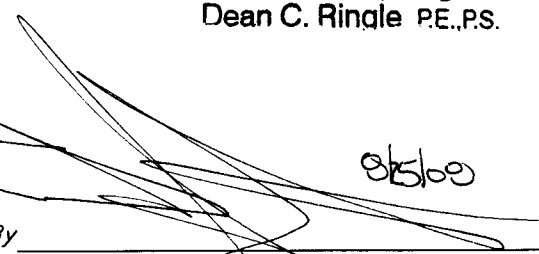
GRAPHIC SCALE (IN FEET)

RECEIVED

AUG 25 2008

Franklin County Engineer
Dean C. Ringle P.E., P.S.



By 
 Professional Surveyor No. 8250

\\C:\DATA\PROJECT\20041570\DWG\41570RW1.DWG-CAD\DWG-LAYOUT-I-LEGAL LAND- - NO AREFS - LAST SAVED BY TBAXTER [8/18/2008 12:56:59 PM] - PLOTTED BY TBAXTER [8/18/2008 12:56:59 PM]