



Evans, Mechwart, Hambleton & Tilton, Inc.
 Engineers • Surveyors • Planners • Scientists
 5500 New Albany Road, Columbus, OH 43054
 Phone: 614.775.4500 Fax: 614.775.4800

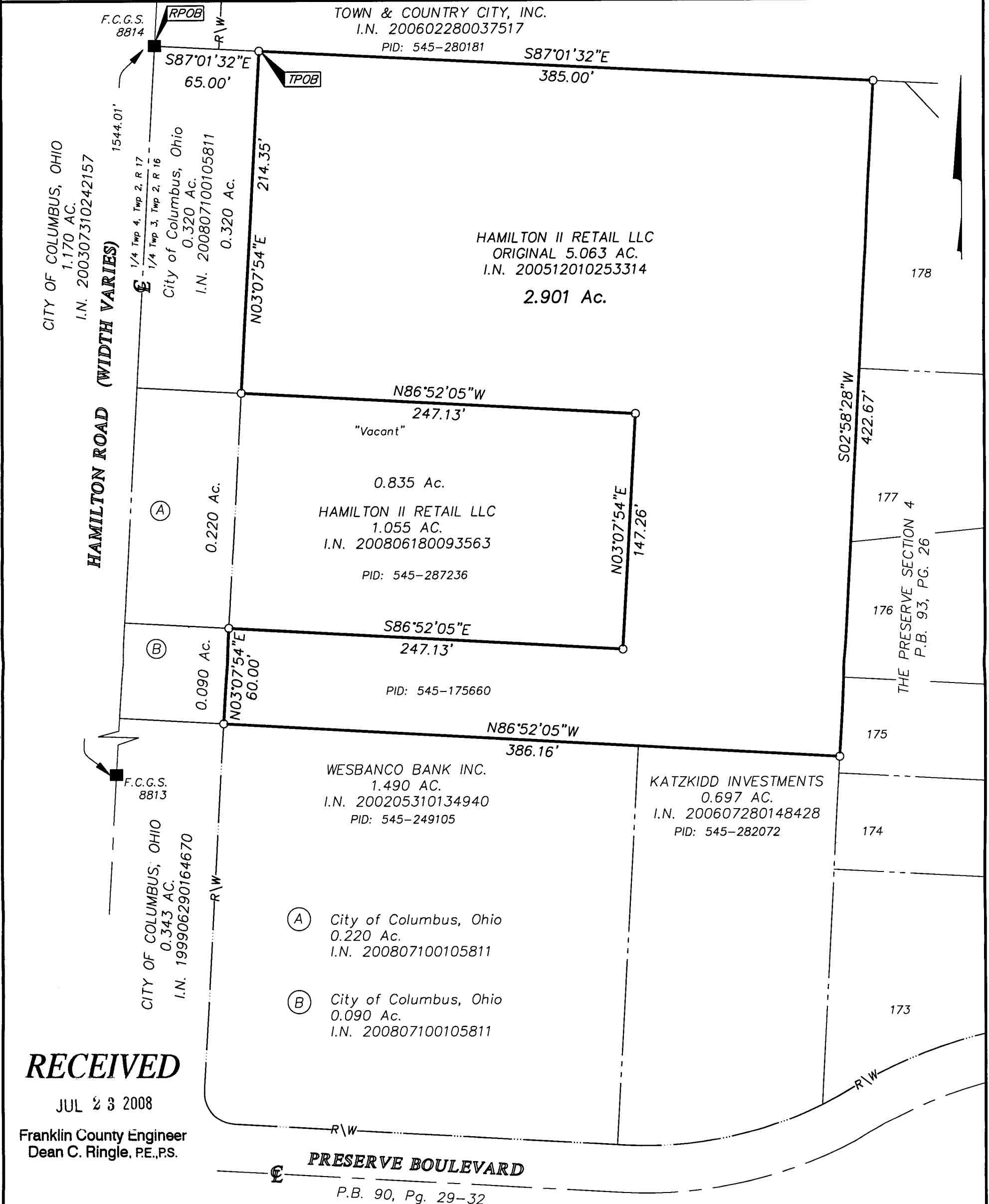
SURVEY OF ACREAGE TRACT
QUARTER TOWNSHIP 3, TOWNSHIP 2, RANGE 16
UNITED STATES MILITARY LANDS
CITY OF COLUMBUS, COUNTY OF FRANKLIN, STATE OF OHIO

Date: July 21, 2008

Scale: 1" = 60'

Job No: 2007-1654

M C M X X V I



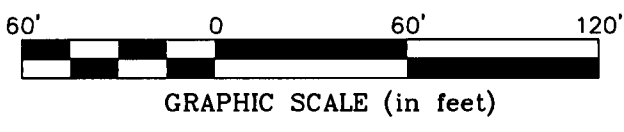
\\CMHDATA1\SURVEY\PROJECT\20071654\DWG\71654BV4.DWG - LAST SAVED BY JJAMS [7/21/2008 2:51:20 PM] - PLOTTED BY JJAMS [7/21/2008 2:51:21 PM]

RECEIVED

JUL 23 2008

Franklin County Engineer
 Dean C. Ringle, P.E., P.S.

BASIS OF BEARINGS: The basis of bearing for this drawing is North 03° 07' 54" East for the centerline of Hamilton Road between Franklin County Geodetic Survey Monument Numbers 8813 and 8814.



- = STONE FND.
- = MON. FND.
- = I.P. FND.
- = I.P. SET
- = MAG. NAIL FND.
- = MAG. NAIL SET
- ▲ = R.R. SPK. FND.
- △ = R.R. SPK. SET
- ◆ = P.K. NAIL FND.

I.P. Set are 13/16" I.D. iron pipe with cap inscribed EMHT INC

By *Heather L. King* 7/22/08
 STATE OF OHIO
 HEATHER L. KING
 S-8307
 REGISTERED PROFESSIONAL SURVEYOR
 No. 8307