

ALTA/ACSM LAND TITLE SURVEY

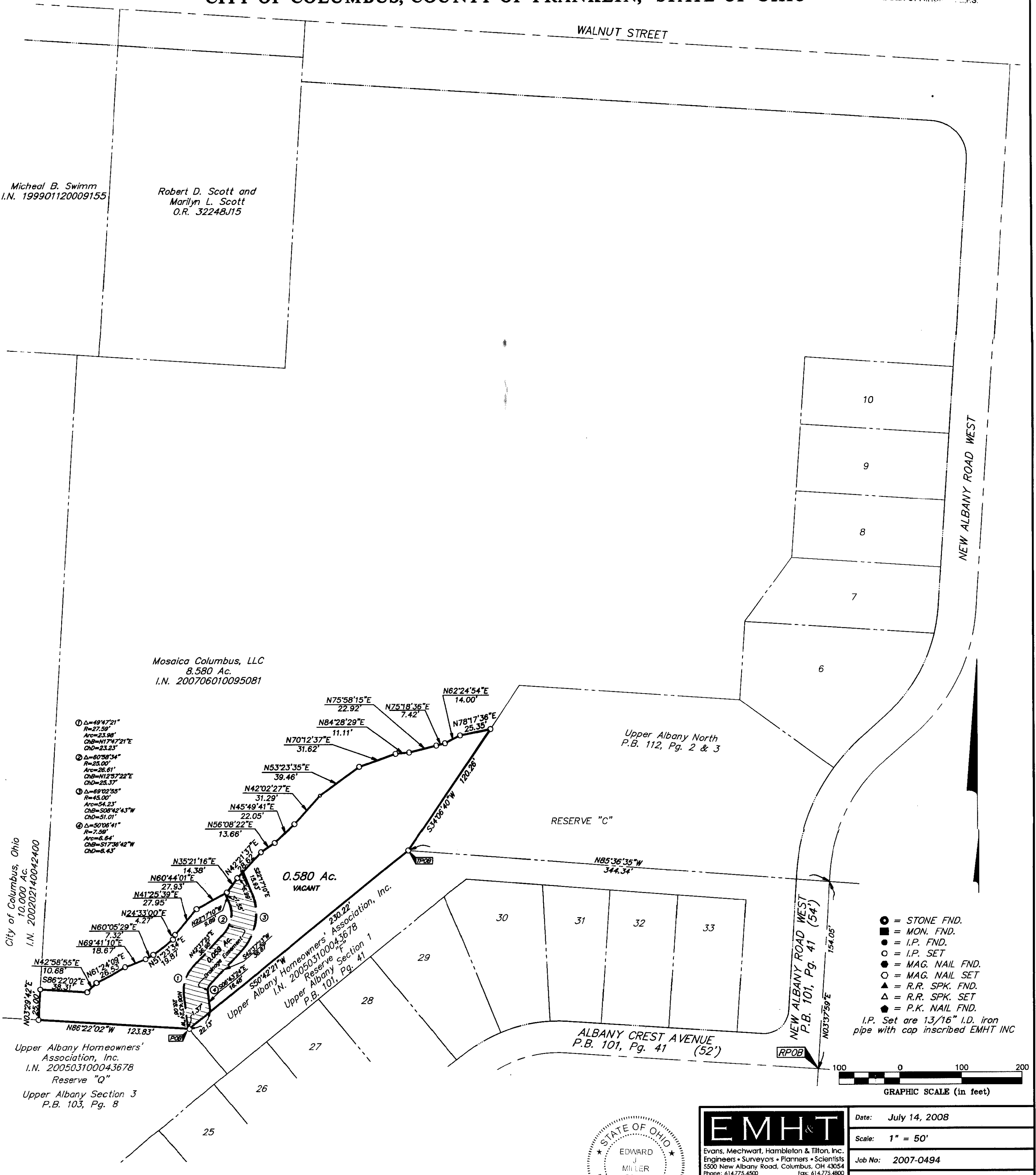
SECTION 7, QUARTER TOWNSHIP 2, TOWNSHIP 2, RANGE 16

UNITED STATES MILITARY LANDS

CITY OF COLUMBUS, COUNTY OF FRANKLIN, STATE OF OHIO

RECEIVED

JUL 14 2008
Franklin County Engineer
Dean C. Rindler, P.E.



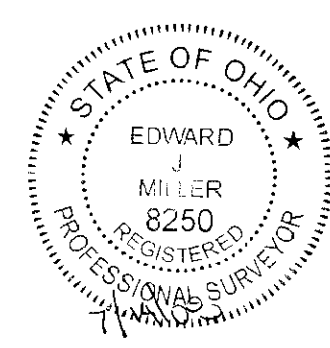
\\CMHDATA1\SURVEY\PROJECT\20070494\DWG\70494BVT.DWG<18X24 PORTRAIT> - NO XREFS - LAST SAVED BY JMASTON [7/14/2008 9:56:24 AM] - PLOTTED BY JMASTON [7/14/2008 9:56:25 AM]

- ① Δ=49°47'21" R=27.59' Arc=23.98' ChD=117°47'21"E ChD=23.23'
- ② Δ=60°58'34" R=25.00' Arc=26.61' ChD=112°57'22"E ChD=23.37'
- ③ Δ=69°02'55" R=45.00' Arc=54.23' ChD=508°42'43"W ChD=51.01'
- ④ Δ=50°08'41" R=7.59' Arc=6.64' ChD=517°36'42"W ChD=6.43'

- = STONE FND.
 - = MON. FND.
 - = I.P. FND.
 - = I.P. SET
 - = MAG. NAIL FND.
 - = MAG. NAIL SET
 - ▲ = R.R. SPK. FND.
 - ▲ = R.R. SPK. SET
 - = P.K. NAIL FND.
- I.P. Set are 13/16" I.D. iron pipe with cap inscribed EMHT INC



BASIS OF BEARINGS: Bearings shown hereon, are based on the same meridian as the bearings shown on the subdivision plat entitled "Upper Albany Section 1," of record in Plat Book 101, Pages 41 and 42, Recorder's Office, Franklin County, Ohio, on which a portion of the centerline of New Albany Road West has a bearing of North 03°37'59" East.



By: _____
Professional Surveyor No. 8250

EMHT		Date: July 14, 2008
Evans, Mechwart, Hambleton & Tilton, Inc. Engineers • Surveyors • Planners • Scientists 5500 New Albany Road, Columbus, OH 43054 Phone: 614.775.4500 Fax: 614.775.4800		Scale: 1" = 50'
M C M X X V		Job No: 2007-0494
		Sheet: 1 of 1
REVISIONS		
MARK	DATE	DESCRIPTION