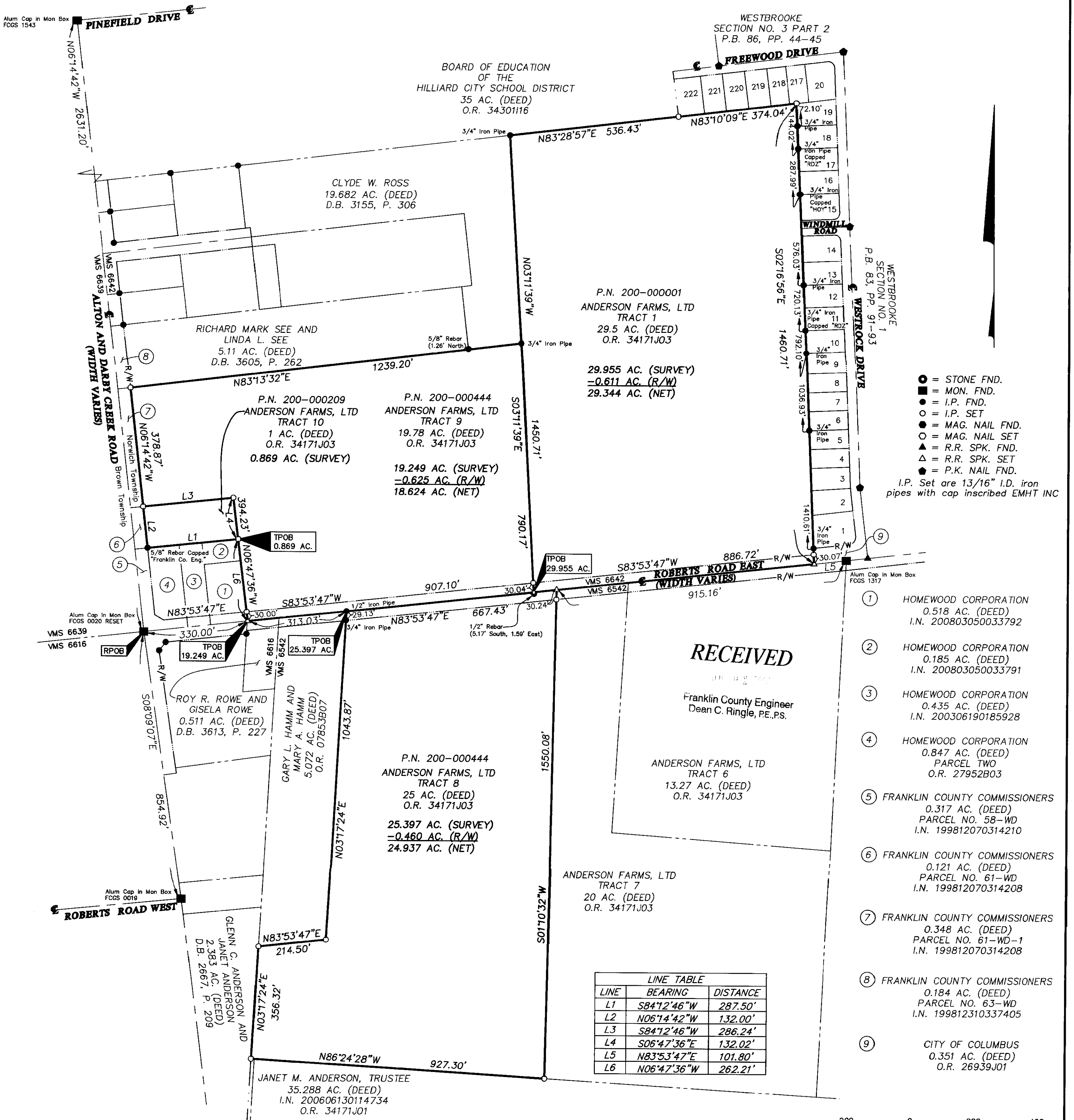


SURVEY OF ACREAGE PARCEL

VIRGINIA MILITARY SURVEYS 6542 AND 6642

TOWNSHIP OF NORWICH, COUNTY OF FRANKLIN, STATE OF OHIO



LINE	BEARING	DISTANCE
L1	S84°12'46"W	287.50'
L2	N06°14'42"W	132.00'
L3	S84°12'46"W	286.24'
L4	S06°47'36"E	132.02'
L5	N83°53'47"E	101.80'
L6	N06°47'36"W	262.21'

SURVEY NOTE:
This survey was prepared using documents of record, prior plats of survey, and observed evidence located by an actual field survey.

Occupation in general fits survey.

Reference: Centerline Survey Plat Alton & Darby Creek RD and Roberts Rd. East, Franklin County Engineers, 10/7/2004, 11/7/2007. Other references as shown.

BASIS OF BEARINGS:
The Bearings shown hereon are based on the Ohio State Plane Coordinate System South Zone as per NAD83 (1986 Adjustment). Control for bearings was from coordinates of monuments FCGS 1543 and FCGS 0020 RESET, having a bearing of North 06° 14' 42" West, established by the Franklin County Engineering Department, using Global Positioning System procedures and equipment.

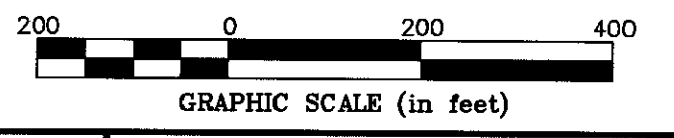


RECEIVED

JUL 01 2008

Franklin County Engineer
Dean C. Ringle, P.E., P.S.

By: *Michael O. Wanchick* 6/27/08
Michael O. Wanchick
Professional Surveyor No. 7854



EMHT
Evans, Mechwart, Hambleton & Tilton, Inc.
Engineers • Surveyors • Planners • Scientists
5500 New Albany Road, Columbus, OH 43054
Phone: 614.775.4500 Fax: 614.775.4800

Date: June 27, 2008
Scale: 1" = 200'
Job No: 2008-1041
Sheet: 1 of 1

REVISIONS

MARK	DATE	DESCRIPTION