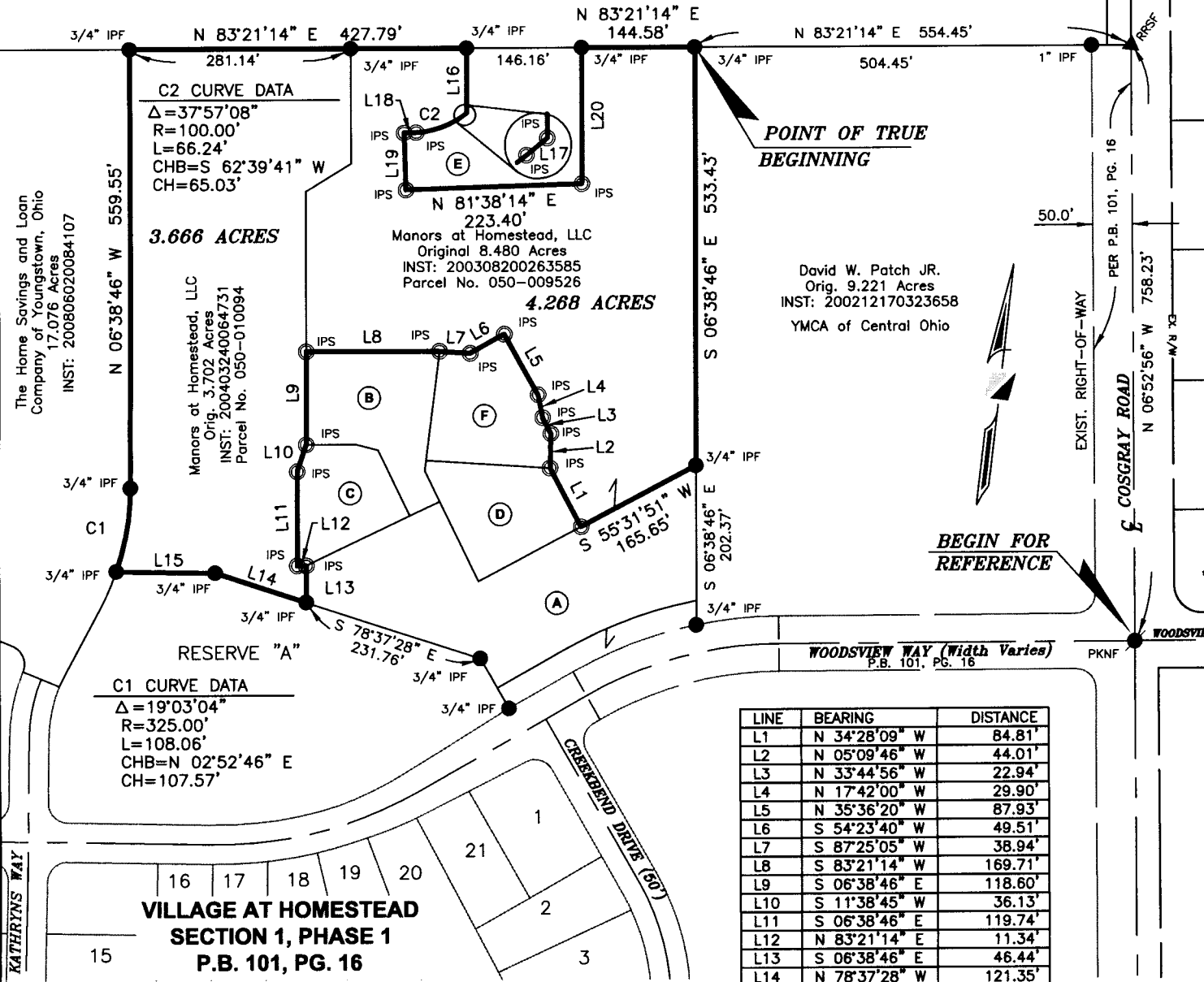


B-2-12

Dominion Homes Inc.  
26.305 ACRES  
Instr. No. 200602090026424



LINE	BEARING	DISTANCE
L1	N 34°28'09" W	84.81'
L2	N 05°09'46" W	44.01'
L3	N 33°44'56" W	22.94'
L4	N 17°42'00" W	29.90'
L5	N 35°36'20" W	87.93'
L6	S 54°23'40" W	49.51'
L7	S 87°25'05" W	38.94'
L8	S 83°21'14" W	169.71'
L9	S 06°38'46" E	118.60'
L10	S 11°38'45" W	36.13'
L11	S 06°38'46" E	119.74'
L12	N 83°21'14" E	11.34'
L13	S 06°38'46" E	46.44'
L14	N 78°37'28" W	121.35'
L15	S 84°20'44" W	125.38'
L16	S 06°38'46" E	83.09'
L17	S 43°41'07" W	4.04'
L18	S 81°38'14" W	15.39'
L19	S 08°21'46" E	72.95'
L20	N 06°38'46" W	175.33'

- (A) The Manors at Homestead Condominium 1.544 Acres C.B. 133, PG. 58
- (B) First Amendment to The Manors at Homestead Condominium 0.540 Acres C.B. 142, PG. 70
- (C) Second Amendment to The Manors at Homestead Condominium 0.359 Acres (Area 1) C.B. 173, PG. 31
- (D) Second Amendment to The Manors at Homestead Condominium 0.428 Acres (Area 2) C.B. 173, PG. 31
- (E) Third Amendment to The Manors at Homestead Condominium 0.738 Acres C.B. 173, PG. 37
- (F) Fourth Amendment to The Manors at Homestead Condominium 0.455 Acres C.B. 188, PG. 5

**LEGEND**

- IPS Iron Pipe Set, 3/4 inch, 30 inches in length, with a yellow cap bearing the name "STANTEC".
- IPF Iron Pipe Found
- ▲ RRSF Railroad Spike Found
- △ RRSS Railroad Spike Set
- RBF Rebar Found
- ☼ CGSS Cotton Gin Spindle Set
- MON Monument Box Found
- PKNF PK Nail Found
- PKNF PK Nail Set

**NOTES:**

- This survey does not represent any easements that may affect the subject parcel.
- This survey does not represent any underground utilities that may affect the subject parcel.
- All record information obtained from the Franklin County Engineer's Office and Recorder's Office.  
Pertinent Documents:  
Previous Surveys  
Recorded deeds as shown on survey

**CERTIFICATION:**

I hereby certify that this survey shown on the attached plat was prepared from an on the ground survey in June 2008 made under my direct supervision and that it and the information, courses and distances as shown are correct to the best of my knowledge.

STANTEC CONSULTING SERVICES, INC.  
(FORMERLY R. D. ZANDE & ASSOCIATES, INC.)

*Robert J. Souds* 06/24/08  
Robert J. Souds Date  
Professional Surveyor No. S-8053



**SCALE IN FEET**

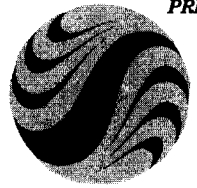
**BASIS OF BEARINGS:**

The bearings shown hereon are based on the grid bearing of North 08°42'15" West from the Ohio State Plane Coordinate System, South Zone, 1986 Adjustment as determined between stations "Frank 158 and Frank 58" established by the Franklin County Engineer.

**BOUNDARY SURVEY OF  
7.934 ACRES  
Lying in  
VIRGINIA MILITARY DISTRICT  
SURVEY NO. 6636**

CITY OF HILLIARD, COUNTY OF FRANKLIN, STATE OF OHIO  
Scale: 1 inch = 200 Feet

PREPARED BY:



1500 LAKE SHORE DRIVE  
SUITE 100  
COLUMBUS, OHIO 43204  
(614) 486-4383 1-800-340-2743  
FAX (614) 486-4387

**Stantec**

Copyright Reserved  
The Contractor shall verify and be responsible for all dimensions. DO NOT scale the drawing - any errors or omissions shall be reported to Stantec without delay.  
The Copyrights to all designs and drawings are the property of Stantec. Reproduction or use for any purposes other than that authorized by Stantec is forbidden.