

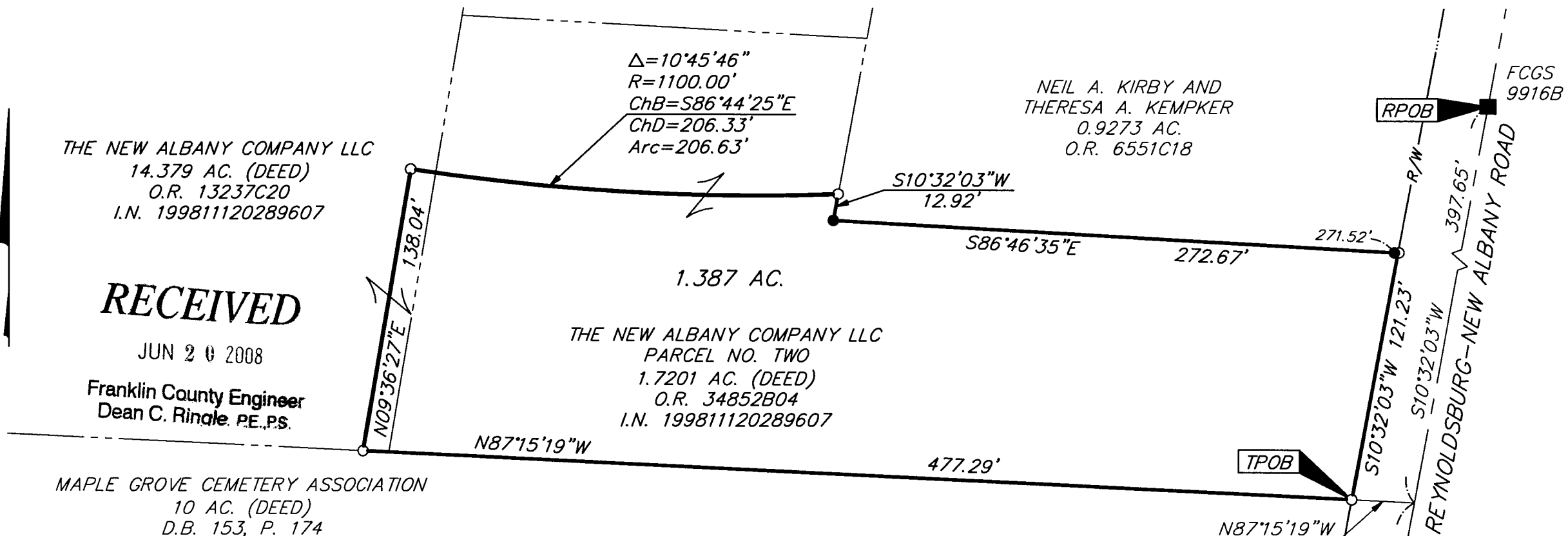


Evans, Mechwart, Hambleton & Tilton, Inc.
 Engineers • Surveyors • Planners • Scientists
 5500 New Albany Road, Columbus, OH 43054
 Phone: 614.775.4500 Fax: 614.775.4800

M C M X X V I

SURVEY OF ACREAGE PARCEL
QUARTER TOWNSHIP 4, TOWNSHIP 2, RANGE 16
UNITED STATES MILITARY LANDS
VILLAGE OF NEW ALBANY, COUNTY OF FRANKLIN, STATE OF OHIO

Date: June 19, 2008
 Scale: 1" = 60'
 Job No: 2008-0091



THE NEW ALBANY COMPANY LLC
 14.379 AC. (DEED)
 O.R. 13237C20
 I.N. 199811120289607

NEIL A. KIRBY AND
 THERESA A. KEMPKER
 0.9273 AC.
 O.R. 6551C18

RECEIVED

JUN 20 2008

Franklin County Engineer
 Dean C. Rinaldi, P.E., P.S.

THE NEW ALBANY COMPANY LLC
 PARCEL NO. TWO
 1.7201 AC. (DEED)
 O.R. 34852B04
 I.N. 199811120289607

MAPLE GROVE CEMETERY ASSOCIATION
 10 AC. (DEED)
 D.B. 153, P. 174

- = 3/4" I.P. FND.
- = I.P. SET
- I.P. Set are 13/16" I.D. iron pipe with cap inscribed EMHT INC

BASIS OF BEARINGS: Bearings are based on the Ohio State Plane Coordinate System, South Zone per NAD 83 (1986 adjustment). Control for the bearings was from the coordinates of monuments FRANK 80 and FRANK 180 established by the Franklin County Engineering Department. A bearing of North 58° 13' 15" East was determined for a portion of the centerline of U.S. Route 62.

SURVEY NOTE: This survey was prepared using documents of record, prior plats of survey, and observed evidence located by an actual field survey.



GRAPHIC SCALE
(IN FEET)

STATE OF OHIO
 HEATHER L. KING
 S-8307
 REGISTERED PROFESSIONAL SURVEYOR
 By: [Signature] 6/19/08
 Professional Surveyor No. 8307

\\CMHDATA1\SURVEY\PROJECT\20080091\DWG\80091BVI\3.DWG-CLAYTON-LEGAL LAND> - NO XREFS - LAST SAVED BY HKING [6/19/2008 4:39:29 PM] - PLOTTED BY HKING [6/19/2008 4:39:30 PM]