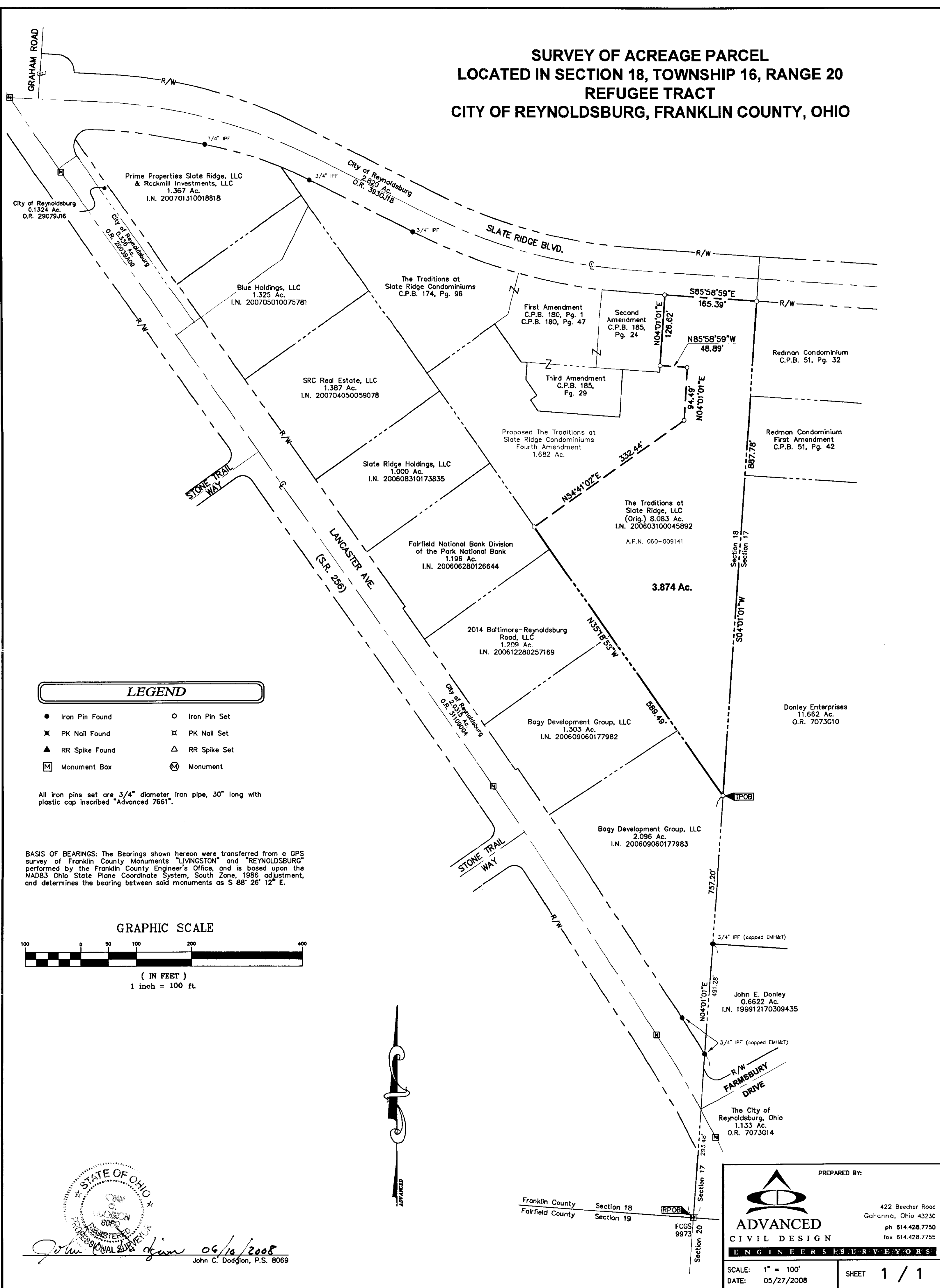


**SURVEY OF ACREAGE PARCEL
LOCATED IN SECTION 18, TOWNSHIP 16, RANGE 20
REFUGEE TRACT
CITY OF REYNOLDSBURG, FRANKLIN COUNTY, OHIO**



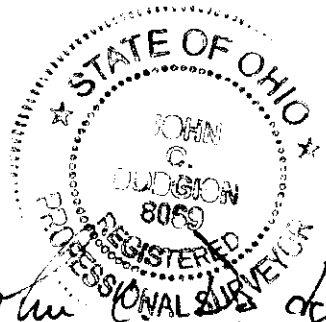
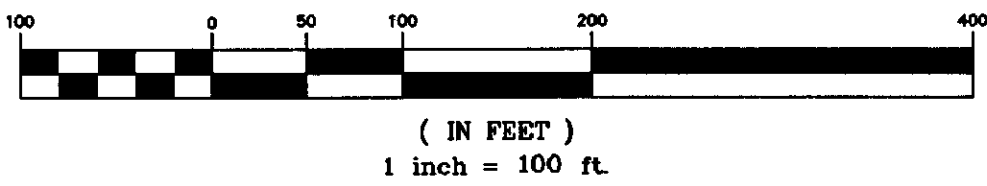
LEGEND

- | | |
|------------------|----------------|
| ● Iron Pin Found | ○ Iron Pin Set |
| ✕ PK Nail Found | ✕ PK Nail Set |
| ▲ RR Spike Found | △ RR Spike Set |
| Ⓜ Monument Box | Ⓜ Monument |

All iron pins set are 3/4" diameter iron pipe, 30" long with plastic cap inscribed "Advanced 7661".

BASIS OF BEARINGS: The Bearings shown hereon were transferred from a GPS survey of Franklin County Monuments "LIVINGSTON" and "REYNOLDSBURG" performed by the Franklin County Engineer's Office, and is based upon the NAD83 Ohio State Plane Coordinate System, South Zone, 1986 adjustment, and determines the bearing between said monuments as S 88° 26' 12" E.

GRAPHIC SCALE



John C. Dodgion
John C. Dodgion, P.S. 8069

PREPARED BY:

ADVANCED
 CIVIL DESIGN
 ENGINEERS & SURVEYORS

422 Beecher Road
Gahanna, Ohio 43230
ph 614.428.7750
fax 614.428.7755

SCALE: 1" = 100'
DATE: 05/27/2008

SHEET 1 / 1

Z:\05-0007-65\dwg\0007-65Bndry_Split_Rev2.dwg Layout1 Jun 10, 2008 9:32:14am jcdodgion