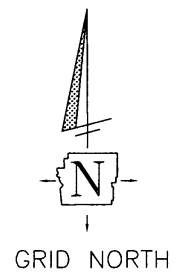
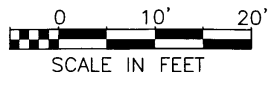


**EXHIBIT OF A UTILITY EASEMENT
BEING A PART OF SECTION 20, TOWNSHIP 11 NORTH,
RANGE 21 WEST, CONGRESS LANDS
VILLAGE OF GROVEPORT, FRANKLIN COUNTY, OHIO**



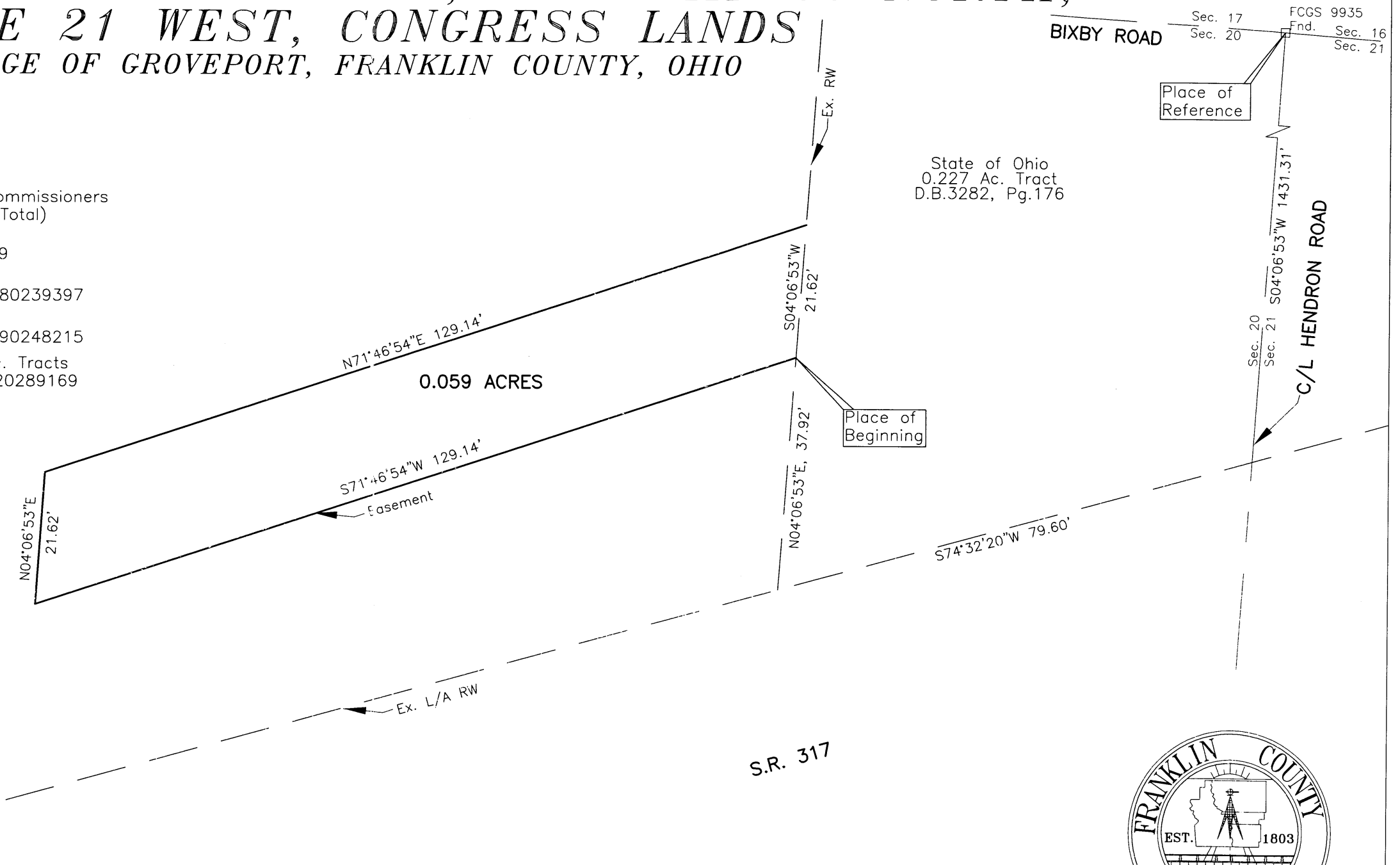
GRID NORTH



SCALE IN FEET

Franklin County Commissioners
8.3074 Ac Tract (Total)
6.325 Ac. Tract
D.B. 2275, PG 349
1.116 Ac. Tract
Inst. No. 200110180239397
1.1334 Ac. Tract
Inst. No. 200110290248215
0.155 & 0.095 Ac. Tracts
Inst No. 200112120289169

State of Ohio
0.227 Ac. Tract
D.B.3282, Pg.176



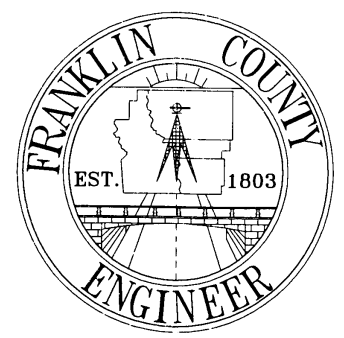
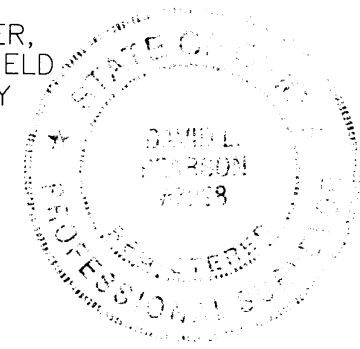
BASIS OF BEARINGS:

BEARINGS ARE BASED ON THE BEARING (N04°06'53"E) AS SHOWN ALONG THE CENTERLINE OF HENDRON ROAD, AS SHOWN IN THE PLANS OF RECORD FRA-317-6.38 ON FILE IN THE FRANKLIN COUNTY ENGINEER'S OFFICE, COLUMBUS, OHIO.

THIS DESCRIPTION WAS PREPARED BY THE OFFICE OF THE FRANKLIN COUNTY ENGINEER, DAVID L. PEARSON, P.S., OHIO REGISTERED SURVEYOR No. 7298, FROM AN ACTUAL FIELD SURVEY OF THE PREMISES MADE IN APRIL AND MAY, 2000, BY THE FRANKLIN COUNTY ENGINEER'S OFFICE, AND FROM DEEDS AND PLATS OF RECORD, RECORDER'S OFFICE, FRANKLIN COUNTY, OHIO.

David L. Pearson
DAVID L. PEARSON
OHIO REGISTERED SURVEYOR NO.7298

05/07/2008
DATE



DATE: 05-06-08	DRAWING: HEN-UTILITY	
	DRAWN BY: D.R.	
REVISIONS		
DATE	DESCRIPTION	BY