

G2L



Evans, Mechwart, Hambleton & Tilton, Inc.
Engineers • Surveyors • Planners • Scientists
5500 New Albany Road, Columbus, OH 43054
Phone: 614.775.4500 Fax: 614.775.4800

SURVEY OF ACREAGE PARCEL

SECTION 11, TOWNSHIP 5, RANGE 22

REFUGEE LANDS

CITY OF COLUMBUS, FRANKLIN COUNTY, OHIO

Date: April 25, 2008

Scale: 1" = 30'

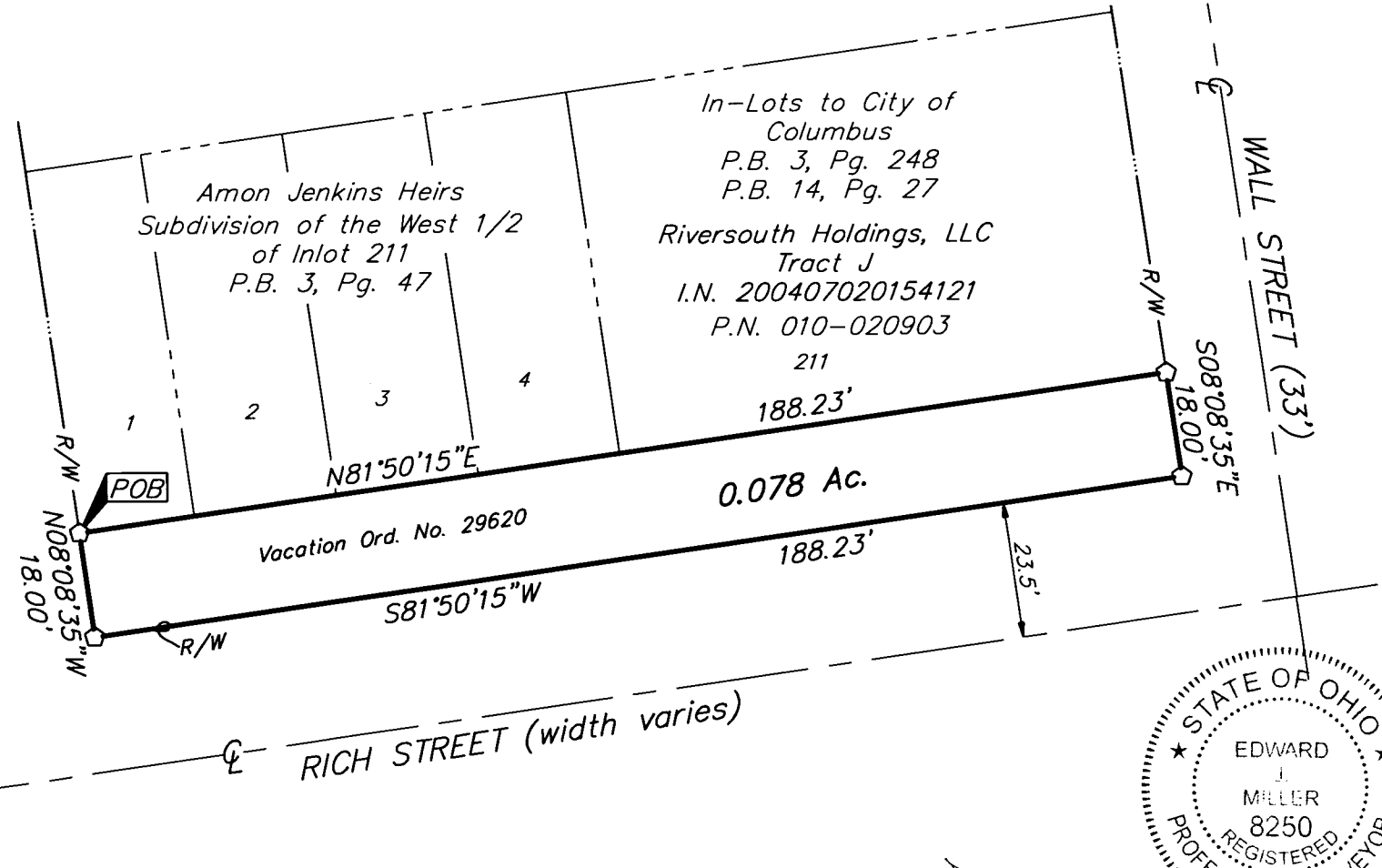
Job No: 2008-0191

M C M X X V I

Franklin County Engineer
Dean C. Rhoads, P.E., P.S.

MAY 05 2008

RECEIVED



- = STONE FND.
- = MON. FND.
- = I.P. FND.
- = I.P. SET
- = MAG. NAIL FND.
- = MAG. NAIL SET
- ▲ = R.R. SPK. FND.
- △ = R.R. SPK. SET
- ◆ = P.K. NAIL FND.

I.P. Set are 13/16" I.D. iron pipe with cap inscribed EMHT INC



GRAPHIC SCALE (IN FEET)

BASIS OF BEARINGS: Bearings are based on a bearing of North 08° 08' 35" West for a portion of the centerline of High Street.



5/5/08

By Professional Surveyor No. 8250

\\C:\DATA\TAI\PROJECT\20080191\DWG\80191B\DWG-LEGAL LAND> - NO XREFS - LAST SAVED BY SCEIGER [4/28/2008 4:44:23 PM] - PLOTTED BY SCEIGER [4/28/2008 4:44:23 PM]