



Evans, Mechwart, Hambleton & Tilton, Inc.
Engineers • Surveyors • Planners • Scientists
5500 New Albany Road, Columbus, OH 43054
Phone: 614.775.4500 Fax: 614.775.4800

M C M X X V I

SURVEY OF ACREAGE PARCEL
HALF SECTION 10, TOWNSHIP 5, RANGE 22
REFUGEE LANDS
CITY OF COLUMBUS, COUNTY OF FRANKLIN, STATE OF OHIO

Date: May 9, 2008

Scale: 1" = 20'

Job No: 2007-2441

SURVEY NOTE:

This survey was prepared using documents of record, prior plats of survey, and observed evidence located by an actual field survey.

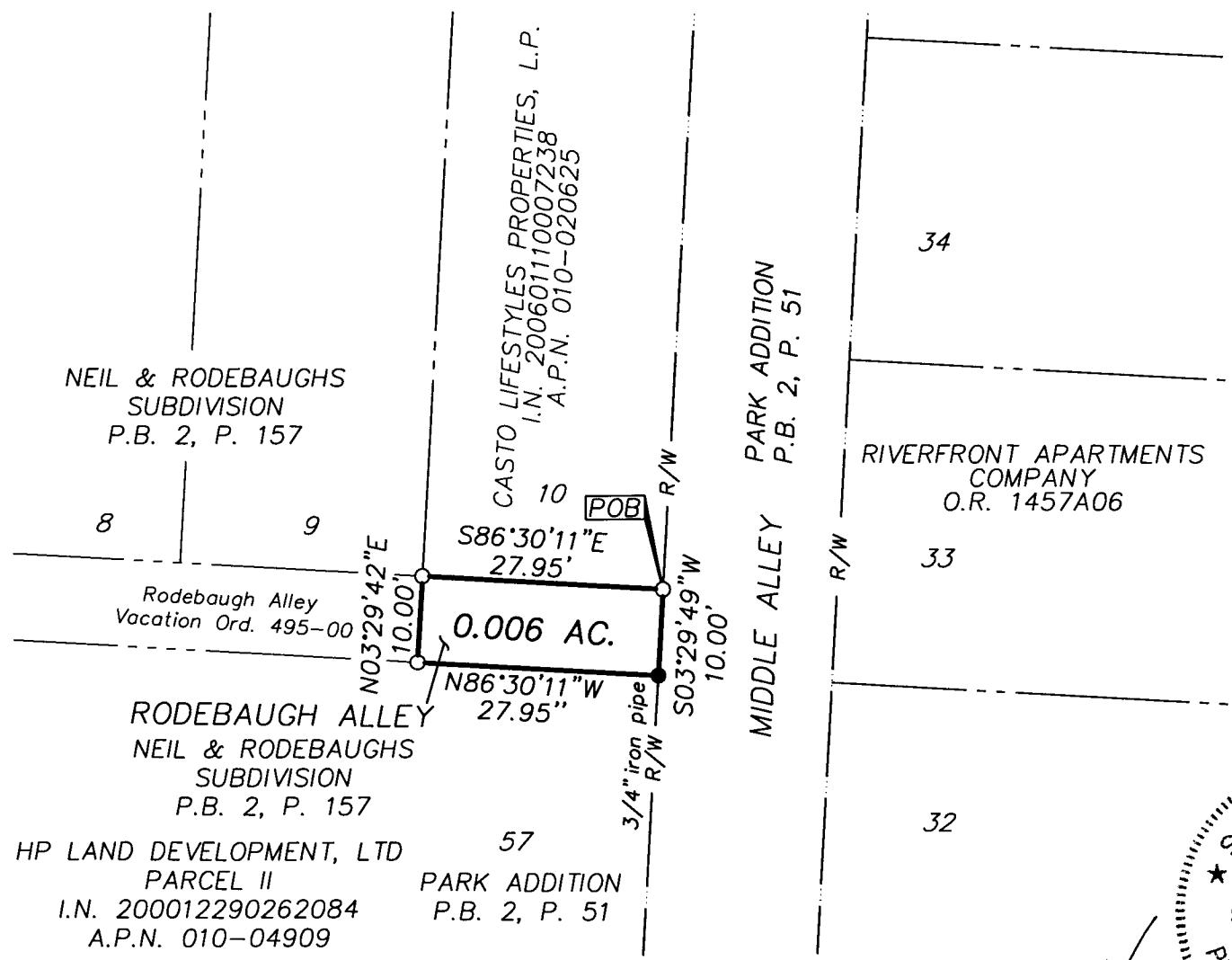
BASIS OF BEARINGS: The basis of bearings is the Ohio State Plane Coordinate System South Zone, as per NAD83 (1986 Adjustment) using the centerline of Vine Street as having a bearing of North 86°30'11"West. Bearings were established using Global Positioning System procedures and equipment from monuments 4-83 and 13-83 as published by the Franklin County Engineering Department.

- = STONE FND.
- = MON. FND.
- = I.P. FND.
- = I.P. SET
- = MAG. NAIL FND.
- = MAG. NAIL SET
- ▲ = R.R. SPK. FND.
- △ = R.R. SPK. SET
- ◆ = P.K. NAIL FND.

I.P. Set are 13/16" I.D. iron pipes with cap inscribed EMHT INC



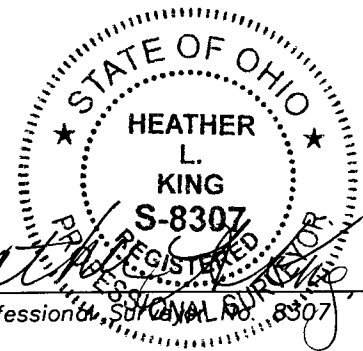
GRAPHIC SCALE
(IN FEET)



RECEIVED

MAY 12 2008

Franklin County Engineer
Dean C. Ringle, PE.,PS.



By *Heather L. King* 5/9/08
Professional Surveyor No. 8307