

# EMH&T

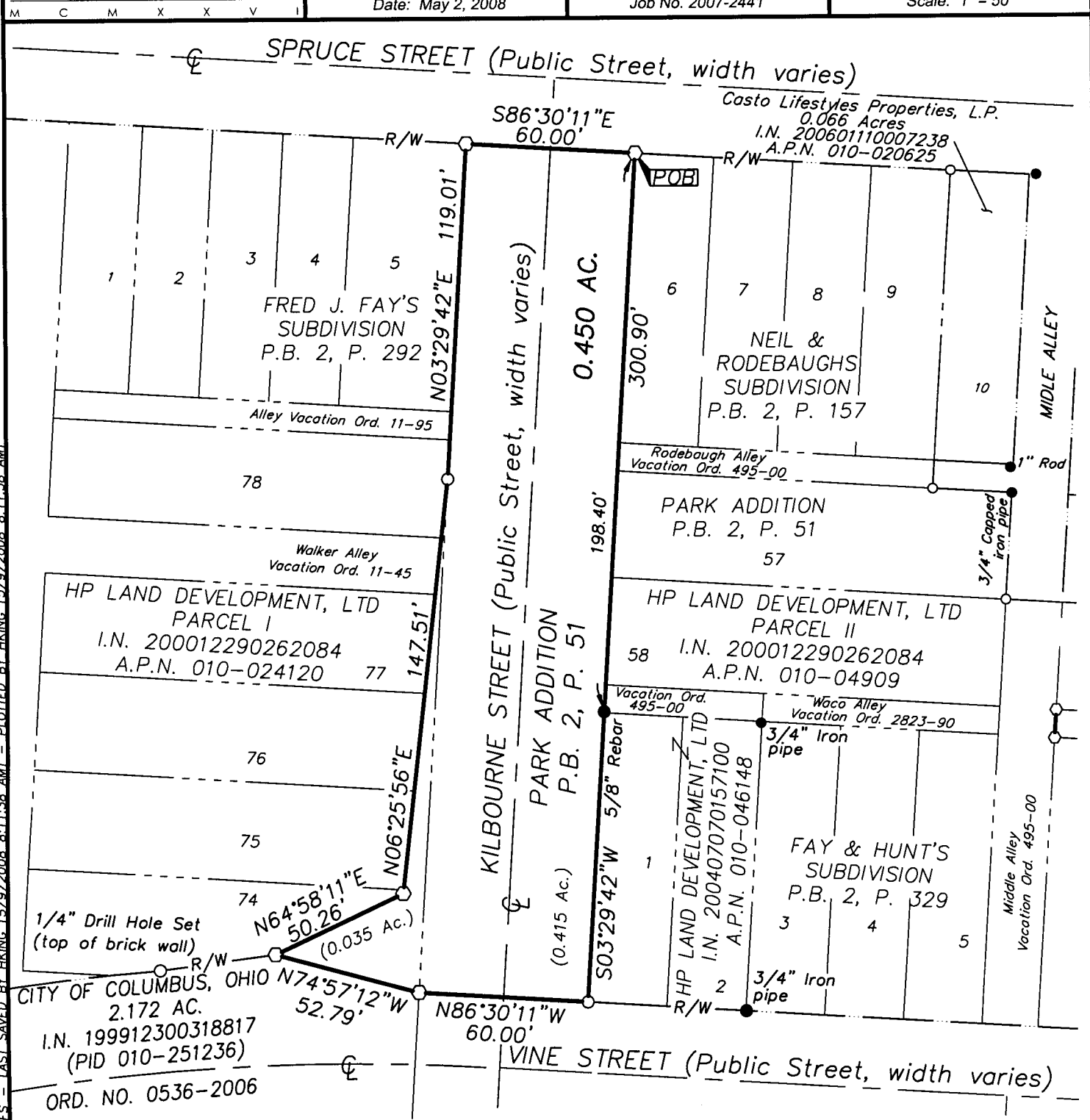
Evans, Mechwart, Hambleton & Tilton, Inc.  
Engineers • Surveyors • Planners • Scientists  
5500 New Albany Road, Columbus, OH 43054  
Phone: 614.775.4500 Fax: 614.775.4800

## SURVEY OF ACREAGE PARCEL HALF SECTION 10, TOWNSHIP 5, RANGE 22 REFUGEE LANDS CITY OF COLUMBUS, COUNTY OF FRANKLIN, STATE OF OHIO

Date: May 2, 2008

Job No. 2007-2441

Scale: 1" = 50'



### SURVEY NOTE:

This survey was prepared using documents of record, prior plats of survey, and observed evidence located by an actual field survey.

**BASIS OF BEARINGS:** The basis of bearings is the Ohio State Plane Coordinate System South Zone, as per NAD83 (1986 Adjustment) using the centerline of Vine Street as having a bearing of North 86°30'11"West. Bearings were established using Global Positioning System procedures and equipment from monuments 4-83 and 13-83 as published by the Franklin County Engineering Department.

- = I.P. FND.
  - = I.P. SET
  - ⊙ = MAG. NAIL SET
- I.P. Set are 13/16" I.D. iron pipes with cap inscribed EMHT INC

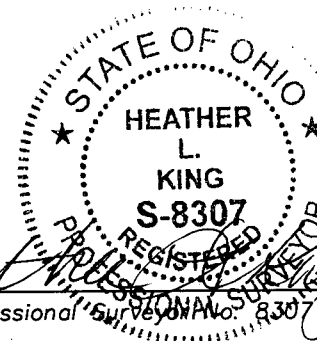


GRAPHIC SCALE (IN FEET)

# RECEIVED

MAY 12 2008

Franklin County Engineer  
Dean C. Ringle, P.E., P.S.



By *Heather L. King*  
Professional Surveyor No. 8307