

SURVEY OF ACREAGE PARCEL

QUARTER TOWNSHIP 3, TOWNSHIP 2, RANGE 19

UNITED STATES MILITARY DISTRICT

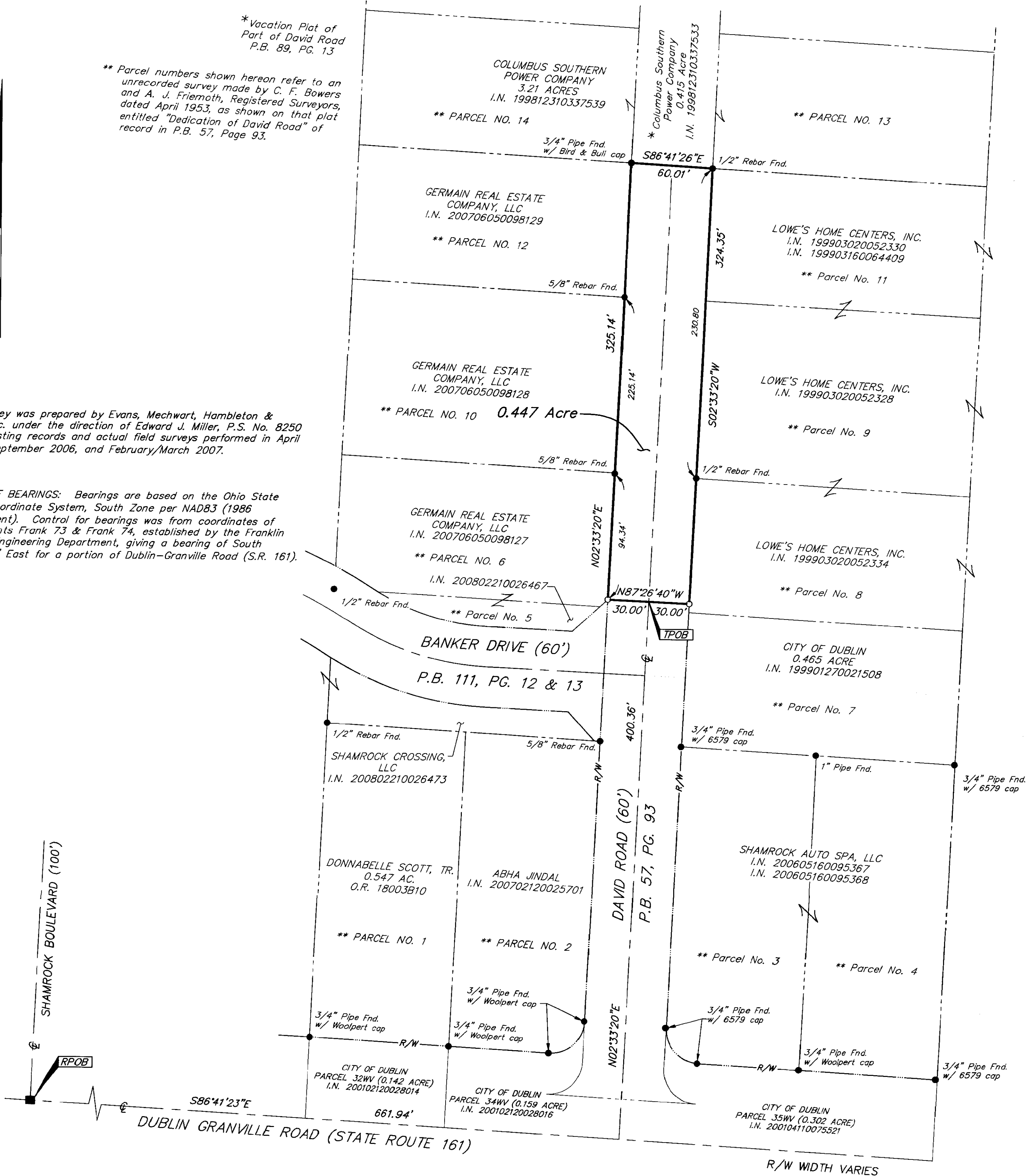
CITY OF DUBLIN, FRANKLIN COUNTY, OHIO

*Vacation Plat of Part of David Road P.B. 89, PG. 13

** Parcel numbers shown hereon refer to an unrecorded survey made by C. F. Bowers and A. J. Friemoth, Registered Surveyors, dated April 1953, as shown on that plat entitled "Dedication of David Road" of record in P.B. 57, Page 93.

This survey was prepared by Evans, Mechwart, Hambleton & Tilton, Inc. under the direction of Edward J. Miller, P.S. No. 8250 from existing records and actual field surveys performed in April 2006, September 2006, and February/March 2007.

BASIS OF BEARINGS: Bearings are based on the Ohio State Plane Coordinate System, South Zone per NAD83 (1986 Adjustment). Control for bearings was from coordinates of monuments Frank 73 & Frank 74, established by the Franklin County Engineering Department, giving a bearing of South 86°41'23" East for a portion of Dublin-Granville Road (S.R. 161).

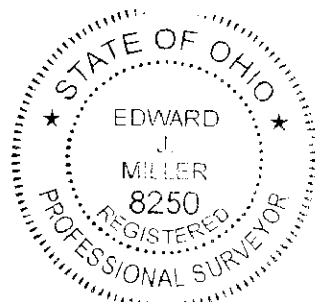


- = STONE FND.
- = MON. FND.
- = I.P. FND.
- = I.P. SET
- = MAG. NAIL FND.
- = MAG. NAIL SET
- ▲ = R.R. SPK. FND.
- △ = R.R. SPK. SET
- = P.K. NAIL FND.

I.P. Set are 13/16" I.D. iron pipe with cap inscribed EMHT INC



GRAPHIC SCALE (IN FEET)



By: *[Signature]*
Professional Surveyor No. 8250

EMHT		Date: April 17, 2007
Evans, Mechwart, Hambleton & Tilton, Inc. Engineers • Surveyors • Planners • Scientists 5500 New Albany Road, Columbus, OH 43054 Phone: 614.775.4500 Fax: 614.775.4800		Scale: 1" = 50'
M C M X X V I		Job No: 2007-0295
REVISIONS		Sheet: 1 of 1
MARK	DATE	DESCRIPTION