

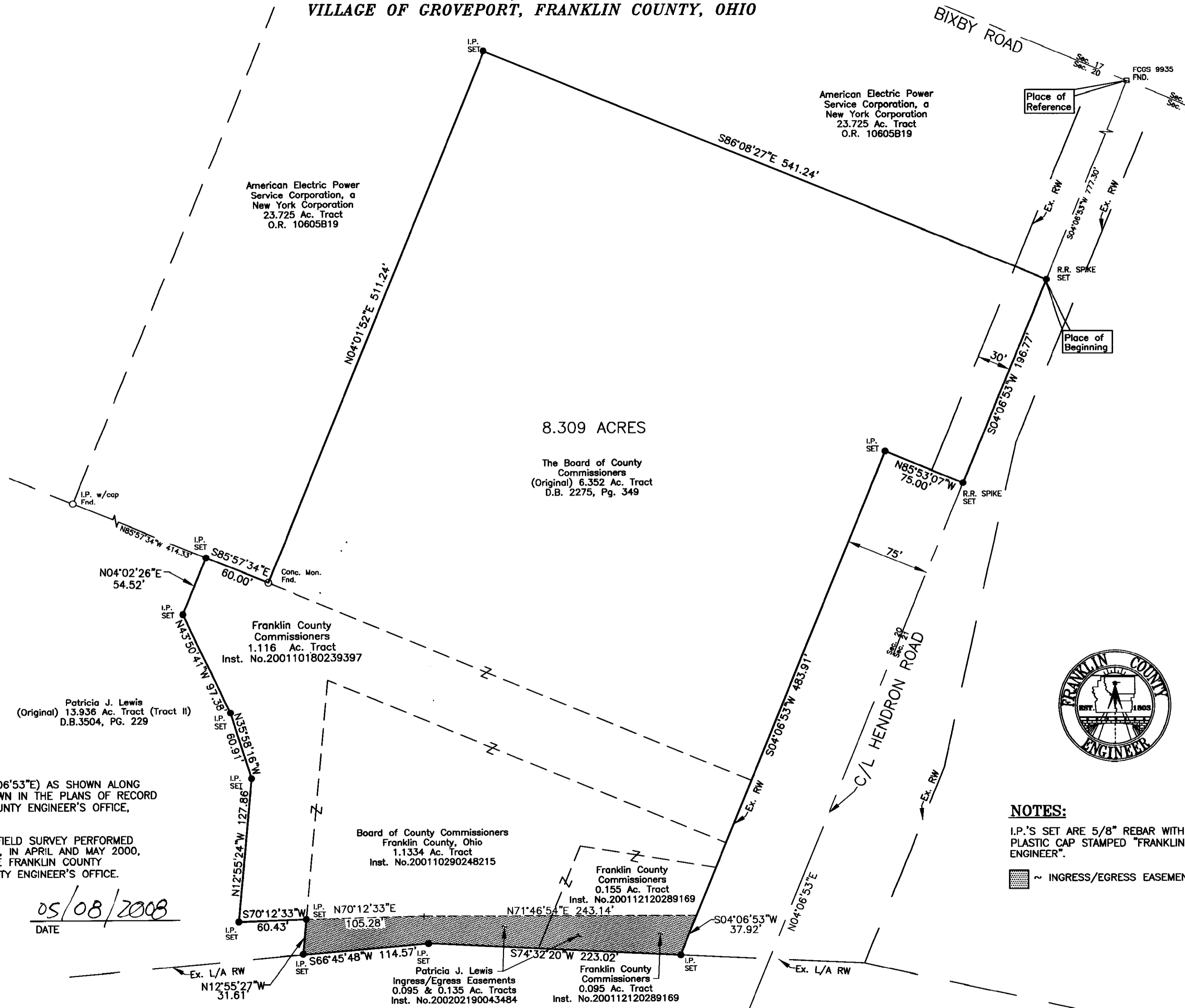


GRID NORTH



SCALE IN FEET

SURVEY OF A 8.309 ACRE TRACT BEING A PART OF SECTION 20, TOWNSHIP 11 NORTH, RANGE 21 WEST, CONGRESS LANDS VILLAGE OF GROVEPORT, FRANKLIN COUNTY, OHIO



8.309 ACRES
The Board of County Commissioners
(Original) 6.352 Ac. Tract
D.B. 2275, Pg. 349

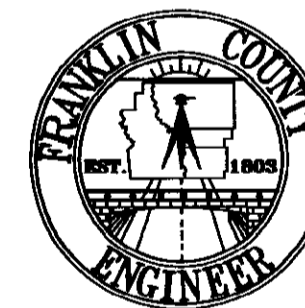
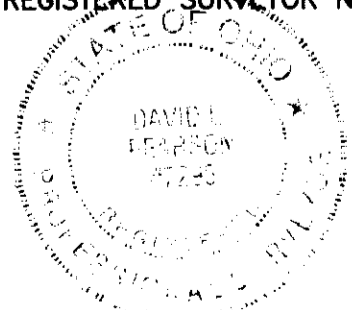
BASIS OF BEARINGS:

BEARINGS ARE BASED ON THE BEARING (N04°06'53"E) AS SHOWN ALONG THE CENTERLINE OF HENDRON ROAD, AS SHOWN IN THE PLANS OF RECORD FRA-317-6.38 ON FILE IN THE FRANKLIN COUNTY ENGINEER'S OFFICE, COLUMBUS, OHIO.

THIS PLAT WAS PREPARED FROM AN ACTUAL FIELD SURVEY PERFORMED BY THE FRANKLIN COUNTY ENGINEER'S OFFICE, IN APRIL AND MAY 2000, ALONG WITH PUBLIC RECORDS ON FILE IN THE FRANKLIN COUNTY RECORDER'S OFFICE AND THE FRANKLIN COUNTY ENGINEER'S OFFICE.

David L. Pearson
DAVID L. PEARSON
OHIO REGISTERED SURVEYOR NO.7298

05/08/2008
DATE



NOTES:

I.P.'S SET ARE 5/8" REBAR WITH YELLOW PLASTIC CAP STAMPED "FRANKLIN COUNTY ENGINEER".

~ INGRESS/EGRESS EASEMENT

DATE: 05-08-08	DRAWING: HENDRONTOT3	
	DRAWN BY: DKT	
REVISIONS		
DATE	DESCRIPTION	BY