

G2C



Evans, Mechwart, Hambleton & Tilton, Inc.
Engineers • Surveyors • Planners • Scientists
5500 New Albany Road, Columbus, OH 43054
Phone: 614.775.4500 Fax: 614.775.4800

M C M X X V

SURVEY OF ACREAGE PARCEL SECTION 11, TOWNSHIP 5, RANGE 22 REFUGEE LANDS CITY OF COLUMBUS, FRANKLIN COUNTY, OHIO

Date: March 31, 2008

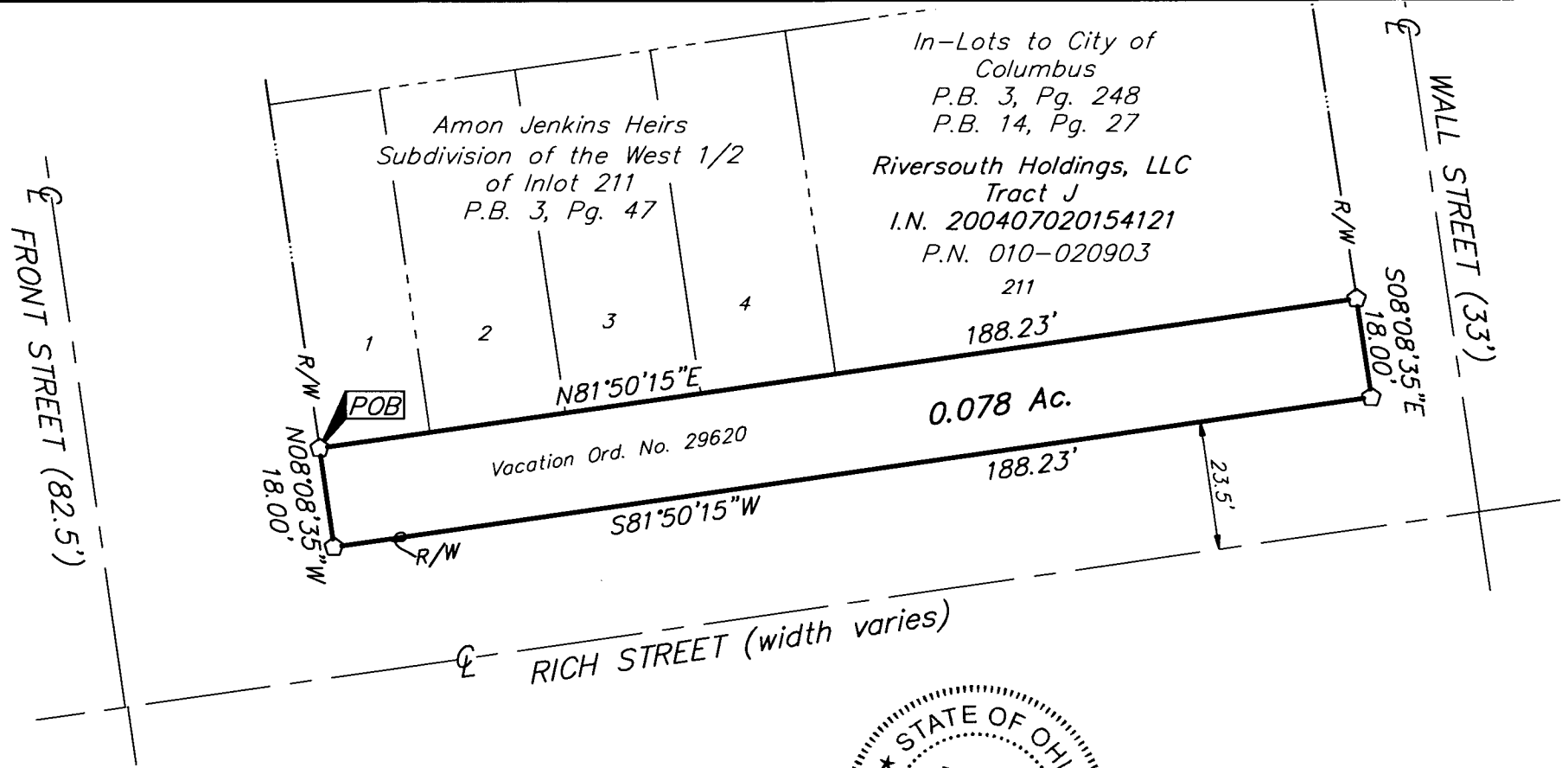
Scale: 1" = 30'

Job No: 2008-0191

RECEIVED

MAR 31 2008

Franklin County Engineer
Dean C. Ringle P.E., P.S.



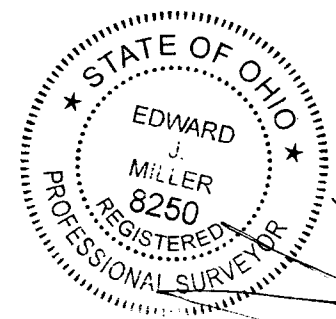
- = STONE FND.
- = MON. FND.
- = I.P. FND.
- = I.P. SET
- = MAG. NAIL FND.
- = MAG. NAIL SET
- ▲ = R.R. SPK. FND.
- △ = R.R. SPK. SET
- ◆ = P.K. NAIL FND.

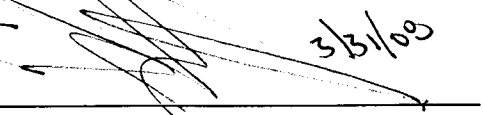
I.P. Set are 13/16" I.D. iron pipe with cap inscribed EMHT INC



GRAPHIC SCALE
(IN FEET)

BASIS OF BEARINGS: Bearings are based on a bearing of North 08° 08' 35" West for a portion of the centerline of High Street.



By  3/31/08
Professional Surveyor No. 8250

I:\CMHDATA\1\SURVEY\PROJECT\20080191\DWG\80191BV.DWG<LEGAL LAND> - NO XREFS - LAST SAVED BY TBAXTER [3/31/2008 7:00:43 AM] - PLOTTED BY TBAXTER [3/31/2008 7:00:43 AM]