

EMH&T

Evans, Mechwart, Hambleton & Tilton, Inc.
 Engineers • Surveyors • Planners • Scientists
 5500 New Albany Road, Columbus, OH 43054
 Phone: 614.775.4500 Fax: 614.775.4800

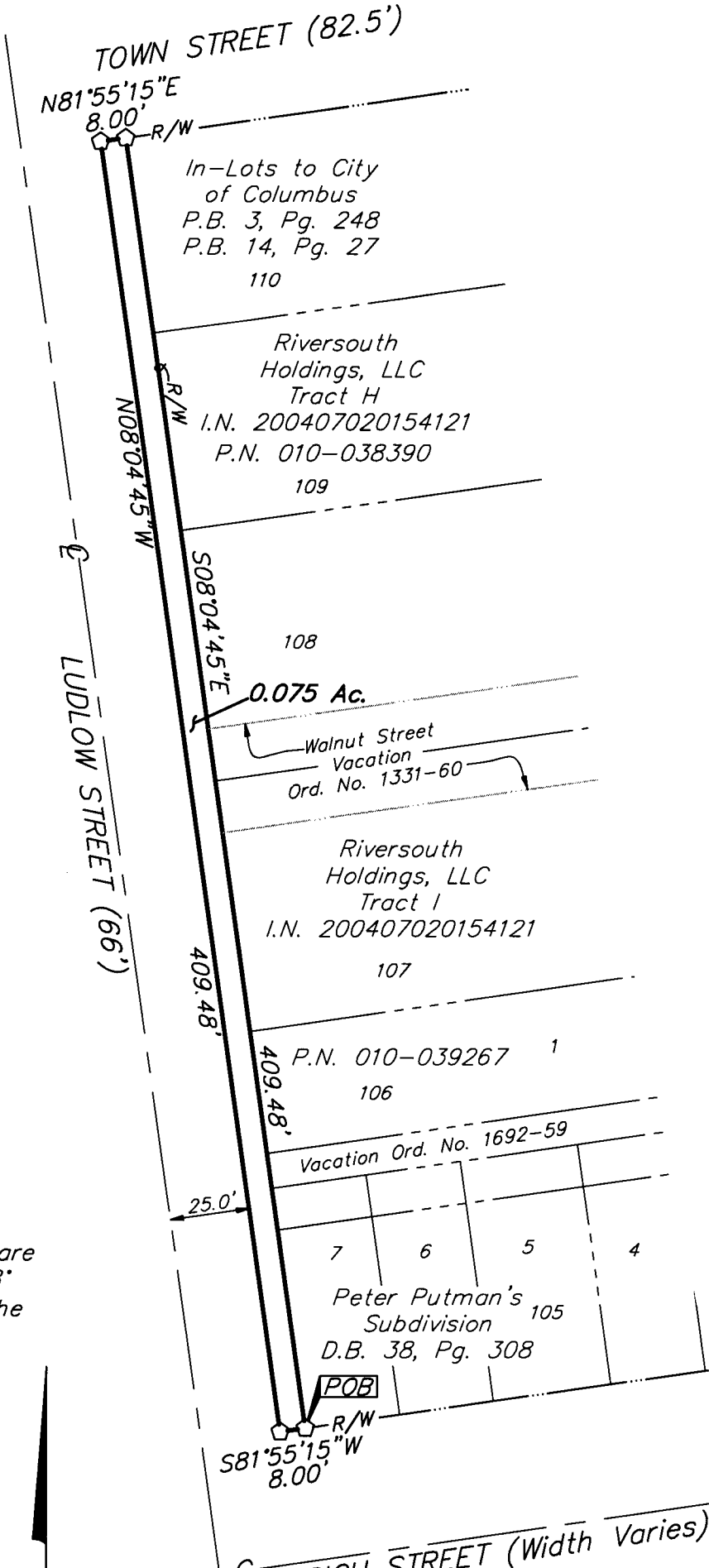
SURVEY OF ACREAGE PARCEL SECTION 11, TOWNSHIP 5, RANGE 22 REFUGEE LANDS CITY OF COLUMBUS, FRANKLIN COUNTY, OHIO

Date: March 31, 2008

Job No. 2008-0191

Scale: 1" = 50'

M C M X X V I

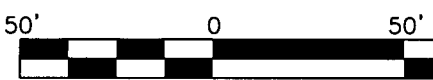


RECEIVED
 MAR 31 2008
 Franklin County Engineer
 Dean C. Rindle, PE, P.S.

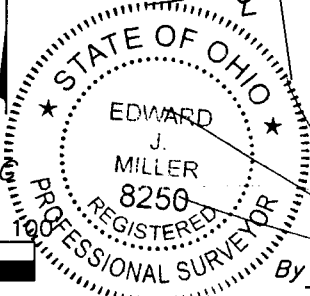
BASIS OF BEARINGS: Bearings are based on a bearing of North 08° 08' 35" West for a portion of the centerline of High Street.

- = STONE FND.
- = MON. FND.
- = I.P. FND.
- = I.P. SET
- = MAG. NAIL FND.
- = MAG. NAIL SET
- ▲ = R.R. SPK. FND.
- △ = R.R. SPK. SET
- ◆ = P.K. NAIL FND.

I.P. Set are 13/16" I.D. iron pipe with cap inscribed EMHT INC.



GRAPHIC SCALE (IN FEET)



3/31/08

Professional Surveyor No. 8250

\\CMHDATA1\SURVEY\PROJECT\20080191\DWG\80191B1\1.DWG-LEGAL PORTRAIT> NO XREFS - - LAST SAVED BY TBAXTER [3/31/2008 6:59:51 AM] - PLOTTED BY TBAXTER [3/31/2008 6:59:52 AM]

62L