

EMH&T

Evans, Mechwart, Hambleton & Tilton, Inc.
Engineers • Surveyors • Planners • Scientists
5500 New Albany Road, Columbus, OH 43054
Phone: 614.775.4500 Fax: 614.775.4800

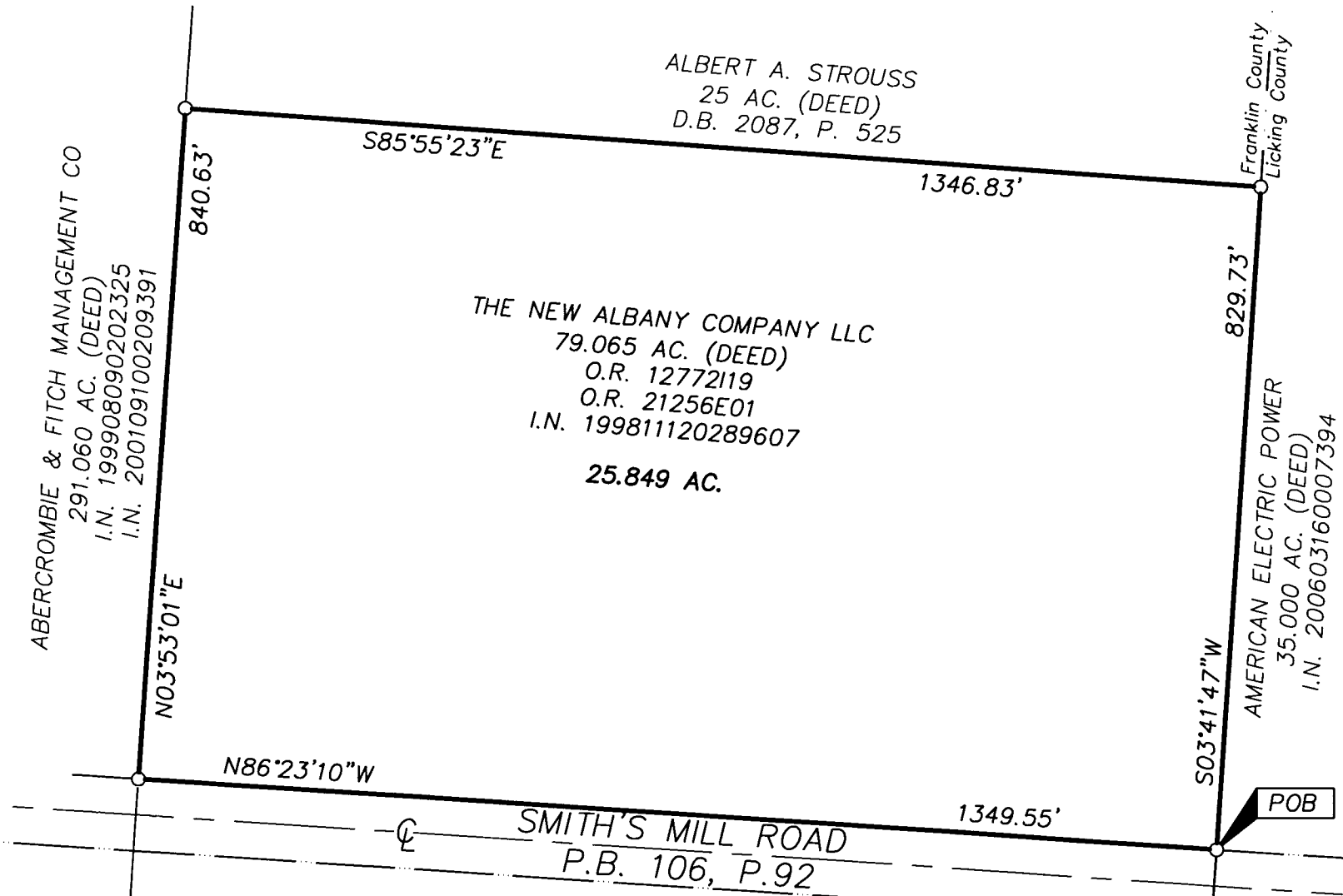
M C M X X V I

SURVEY OF ACREAGE PARCEL QUARTER TOWNSHIP 4, TOWNSHIP 2, RANGE 16 UNITED STATES MILITARY LANDS VILLAGE OF NEW ALBANY, COUNTY OF FRANKLIN, STATE OF OHIO

Date: April 21, 2008

Scale: 1" = 200'

Job No: 2008-0677



- = STONE FND.
- = MON. FND.
- = I.P. FND.
- = I.P. SET
- = MAG. NAIL FND.
- = MAG. NAIL SET
- ▲ = R.R. SPK. FND.
- △ = R.R. SPK. SET
- ◆ = P.K. NAIL FND.

I.P. Set are 13/16" I.D. iron pipes with cap inscribed EMHT INC



GRAPHIC SCALE (IN FEET)

BASIS OF BEARINGS:
The Bearings shown on this drawing are based on the same meridian as the bearings shown on the plat entitled "Smith's Mill Road Extension Dedication and Easements" of record in Plat Book 106, Page 92, Recorder's Office Franklin County Ohio. On said plat of record a portion of centerline of Smith's Mill Road has a bearing of South 86° 23' 10" East.



Heather L. King 4/23/08
Professional Surveyor No. 8307

RECEIVED

APR 25 2008

I:\CADD\2008\PROJECT\20080627\DWG\80677B\DWG-LEGAL.LAND> - NO REFS - LAST SAVED BY JAMES [4/21/2008 8:28:49 AM] - PLOTTED BY JAMES [4/21/2008 8:28:49 AM]