

EMH&T

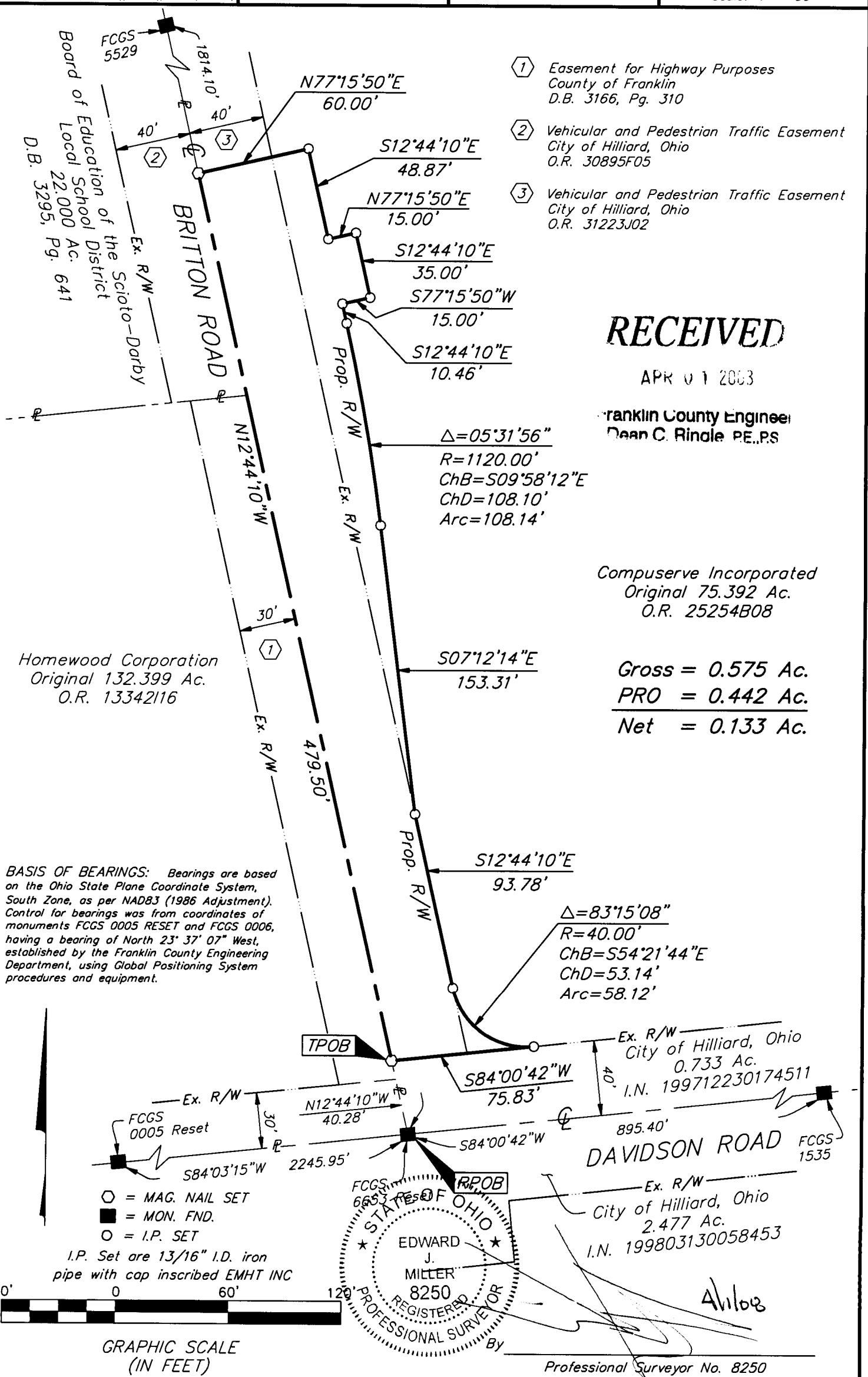
Evans, Mechwart, Hambleton & Tilton, Inc.
 Engineers • Surveyors • Planners • Scientists
 5500 New Albany Road, Columbus, OH 43054
 Phone: 614.775.4500 Fax: 614.775.4800

RIGHT-OF-WAY DEDICATION VIRGINIA MILITARY SURVEY NO. 4854 CITY OF HILLIARD, FRANKLIN COUNTY, OHIO

Date: March 21, 2008

Job No. 2006-2116

Scale: 1" = 60'



- ① Easement for Highway Purposes
 County of Franklin
 D.B. 3166, Pg. 310
- ② Vehicular and Pedestrian Traffic Easement
 City of Hilliard, Ohio
 O.R. 30895F05
- ③ Vehicular and Pedestrian Traffic Easement
 City of Hilliard, Ohio
 O.R. 31223J02

RECEIVED

APR 01 2008

Franklin County Engineer
 Dean C. Rinole PE,PS

Compuserve Incorporated
 Original 75.392 Ac.
 O.R. 25254B08

Gross = 0.575 Ac.
 PRO = 0.442 Ac.
 Net = 0.133 Ac.

BASIS OF BEARINGS: Bearings are based on the Ohio State Plane Coordinate System, South Zone, as per NAD83 (1986 Adjustment). Control for bearings was from coordinates of monuments FCGS 0005 RESET and FCGS 0006, having a bearing of North 23° 37' 07" West, established by the Franklin County Engineering Department, using Global Positioning System procedures and equipment.

\\CMHDATA1\SURVEY\PROJECT\20062116\DWG\62116BV12.DWG-LEGAL PORTRAIT> - NO XREFS - LAST SAVED BY BCHARLES [3/21/2008 10:21:45 AM] - PLOTTED BY BCHARLES [3/21/2008 10:21:56 AM]