

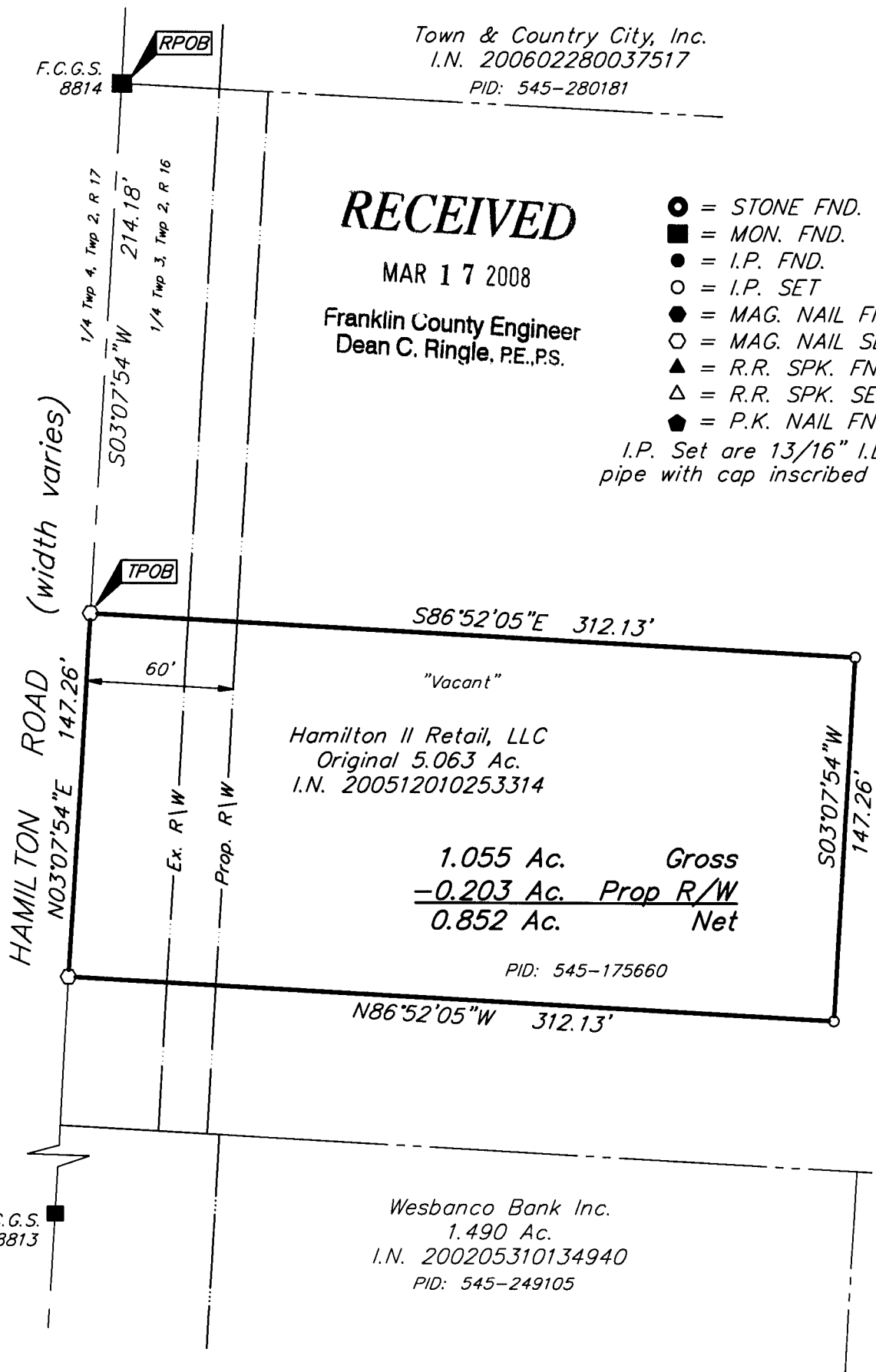
EMH&T
 Evans, Mechwart, Hambleton & Tilton, Inc.
 Engineers • Surveyors • Planners • Scientists
 5500 New Albany Road, Columbus, OH 43054
 Phone: 614.775.4500 Fax: 614.775.4800

SURVEY OF ACREAGE PARCEL
QUARTER TOWNSHIP 3, TOWNSHIP 2, RANGE 16
UNITED STATES MILITARY LANDS
CITY OF COLUMBUS, FRANKLIN COUNTY, OHIO

Date: March 17, 2008

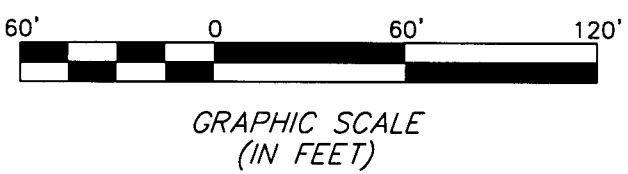
Job No. 2007-1654

Scale: 1" = 60'



- = STONE FND.
 - = MON. FND.
 - = I.P. FND.
 - = I.P. SET
 - = MAG. NAIL FND.
 - = MAG. NAIL SET
 - ▲ = R.R. SPK. FND.
 - △ = R.R. SPK. SET
 - ◆ = P.K. NAIL FND.
- I.P. Set are 13/16" I.D. iron pipe with cap inscribed EMHT INC

BASIS OF BEARINGS:
 The basis of bearing for this drawing is North 03° 07' 54" East for the centerline of Hamilton Road between Franklin County Geodetic Survey Monument Numbers 8813 and 8814.



By: *Heather King*
 Professional Surveyor
 STATE OF OHIO
 HEATHER KING
 58307
 3/17/08
 PROFESSIONAL SURVEYOR

I:\CMHDATA\1\SURVE\PROJECT\20071654\DWG\71654BY.DWG<8-5X11 PORTRAIT LEGAL> - NO XREFS - LAST SAVED BY HKING [3/17/2008 11:27:49 AM] - PLOTTED BY HKING [3/17/2008 11:27:50 AM]