

RIGHT-OF-WAY DEDICATION PARCEL

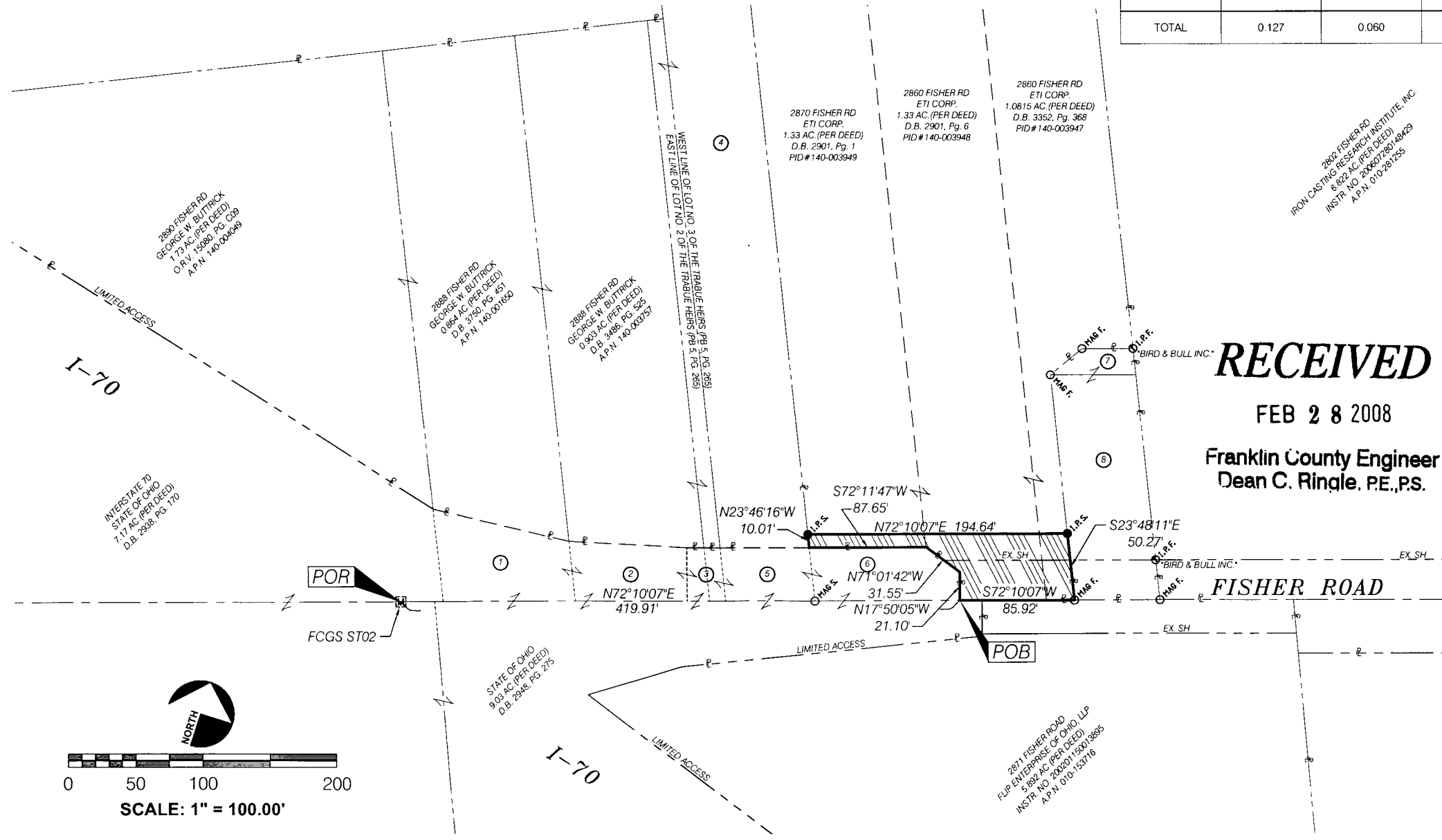
SITUATED IN THE STATE OF OHIO, COUNTY OF FRANKLIN, TOWNSHIP OF FRANKLIN;
 BEING A PART OF SURVEY NO. 530 OF THE VIRGINIA MILITARY DISTRICT;
 BEING A PART OF LOT NO. 3 OF THE SUBDIVISION AMONG THE JOHN P. TRABUE HEIRS
 AS PER P.B. 5, PG. 265 AND PER P.B. 17, PG. 314

ACREAGE BREAKDOWN

A.P.N.	GROSS TAKE	PRESENT ROAD OCCUPIES (WITHIN TAKE)	NET TAKE
140-003949	0.020	0.000	0.020
140-003948	0.083	0.045	0.038
140-003947	0.024	0.015	0.009
TOTAL	0.127	0.060	0.067

wd partners
 7007 Discover Blvd.
 Dublin, OH 43017
 614.634.7000 T
 614.634.7777 F
 innovate@wdpartners.com
 wdpartners.com

- ### LEGEND
- I.R.S. 5/8" x 30" IRON PIN SET
 - MAG.S. 2" MAGNETIC NAIL SET
 - ⊕ I.R.P. CAPPED IRON PIN FOUND
 - ⊙ P.F. 3/4" O.D. IRON PIPE FOUND
 - ⊠ M.B. MONUMENT BOX FOUND
 - ▨ AREA TO BE DEDICATED TO THE CITY OF COLUMBUS



RECEIVED

FEB 28 2008

Franklin County Engineer
 Dean C. Ringle, PE., P.S.

The bearings shown here are based upon the centerline of Fisher Road (North 72° 10' 07" East) as shown Instrument Number 200712070211136. All bearings hereon are shown to indicate angles only. This information is based upon a field survey performed by WD Partners on February 14, 2008.

[Signature]
 Kevin P. Carpenter, P.S. # 8124
 February 28, 2008

