

RECEIVED

EXHIBIT A

H-6-F

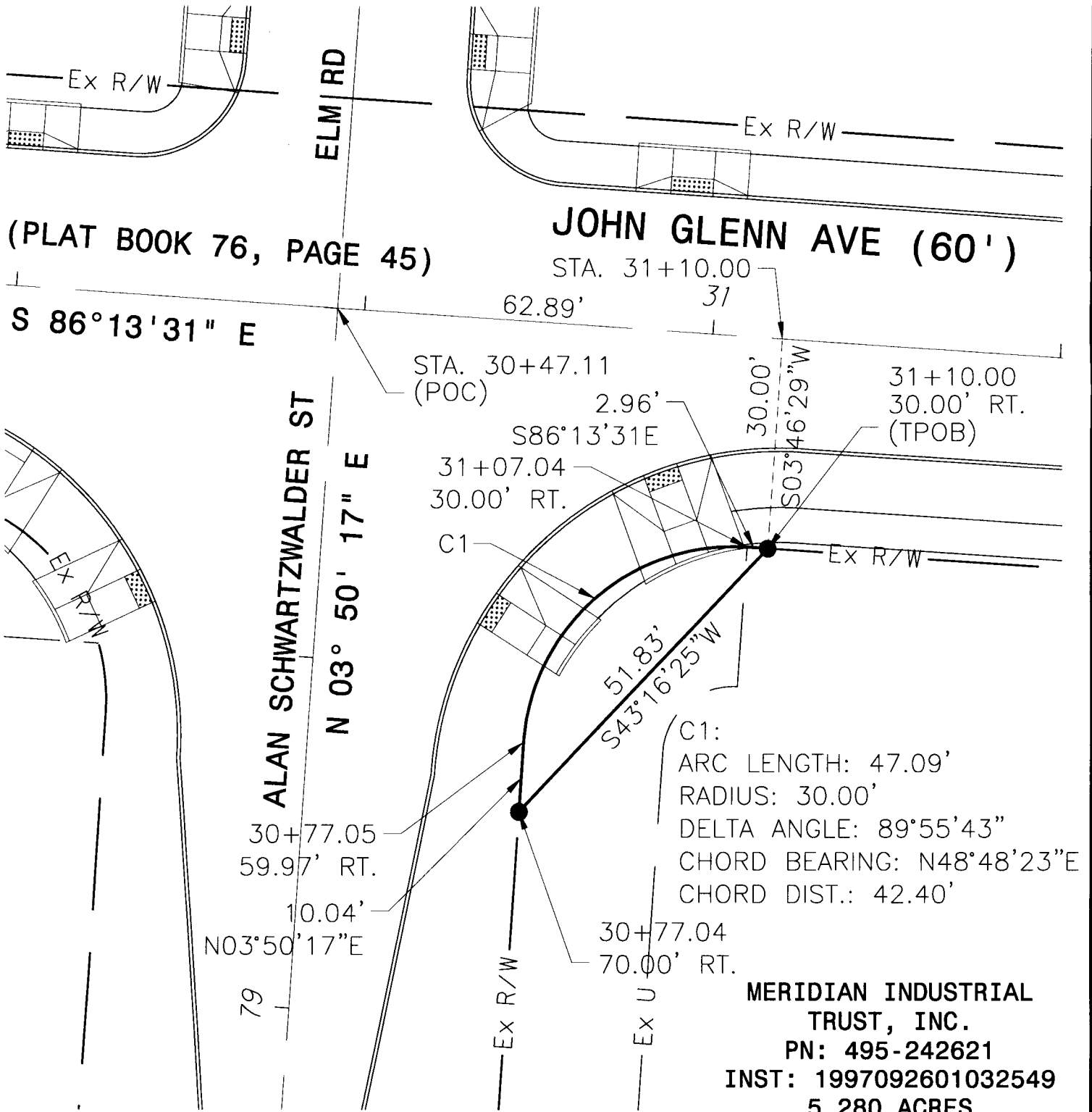
FEB 21 2008

Franklin County Engineer  
Dean C. Rinaldi, P.E., P.S.

PARCEL 10-WD  
0.011 ACRES

PROPOSED PERMANENT R/W

SEC 1, TOWNSHIP 3 NORTH, RANGE 22 WEST  
CITY OF COLUMBUS, HAMILTON TOWNSHIP  
FRANKLIN COUNTY, OHIO



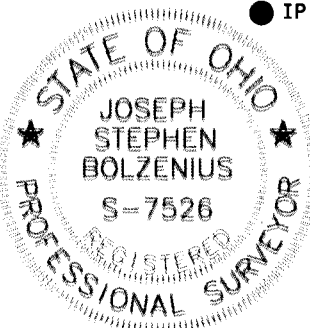
**MERIDIAN INDUSTRIAL TRUST, INC.**  
 PN: 495-242621  
 INST: 1997092601032549  
 5.280 ACRES

BEARINGS ARE BASED ON THE OHIO STATE PLANE COORDINATE SYSTEM, OHIO SOUTH ZONE, AS PER N.A.D. 83 (PROJECTION ADJUSTMENT DATE 1986) USING THE PUBLISHED COORDINATES FOR FRANKLIN COUNTY SURVEY CONTROL POINTS #9930 & #9963 USING GLOBAL POSITIONING SYSTEM PROCEDURES AND EQUIPMENT. THE CENTERLINE OF JOHN GLENN AVENUE IS HELD AS S86°13'31"E.

- IP FOUND
- IP SET (5/8 INCH X 30 INCH REBAR WITH CAP)



SCALE: 1" = 20'



*Joseph S. Bolzenius* 2-18-08  
 JOSEPH S. BOLZENIUS, P.E., P.S.  
 PROFESSIONAL SURVEYOR NO. 7526

DATE

JOHN GLENN AVENUE		
DATE: 02-17-08	DWG NO. 10-WD	DRAWN: SJB CHECKED: JSB