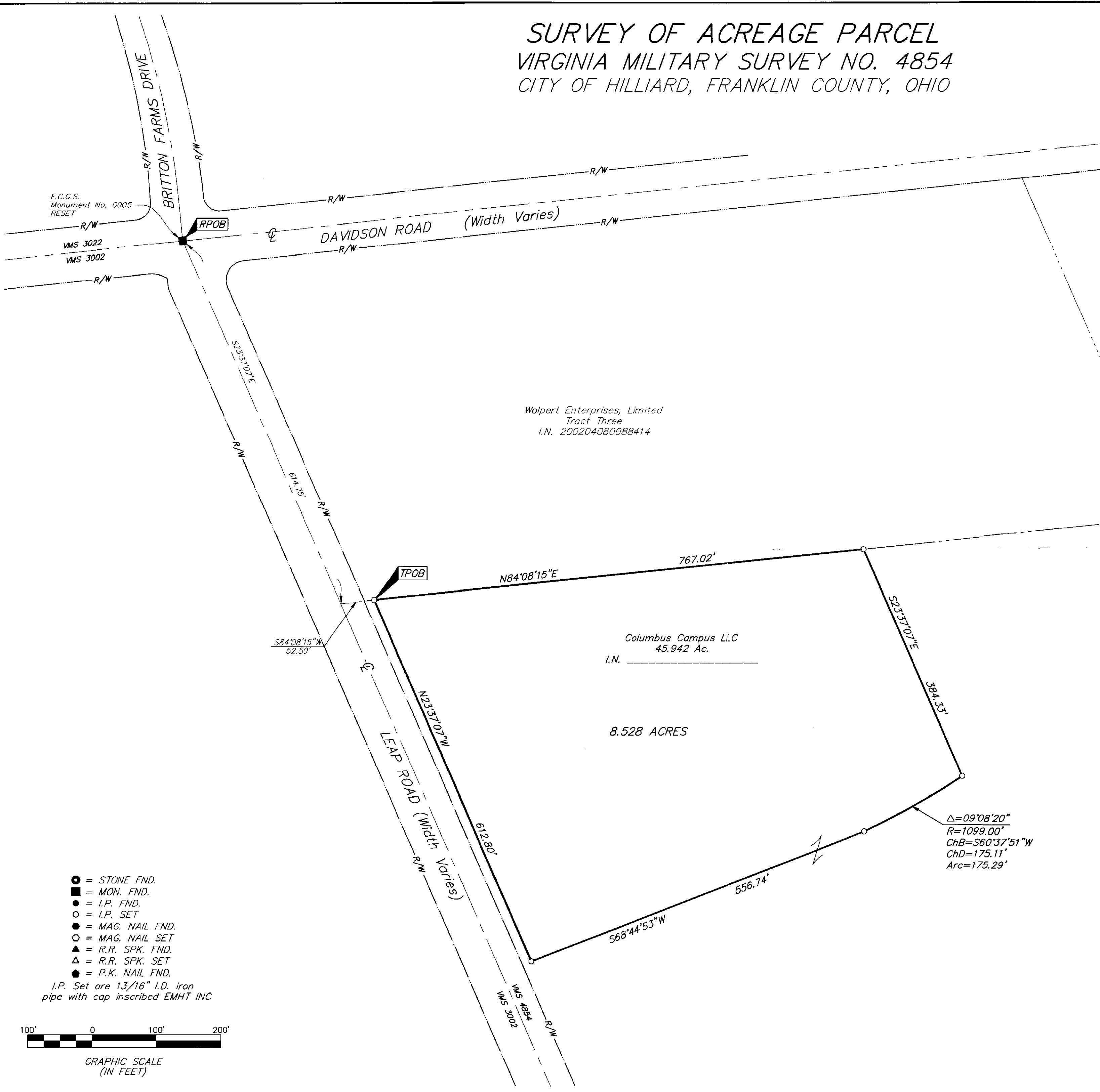


SURVEY OF ACREAGE PARCEL
VIRGINIA MILITARY SURVEY NO. 4854
CITY OF HILLIARD, FRANKLIN COUNTY, OHIO

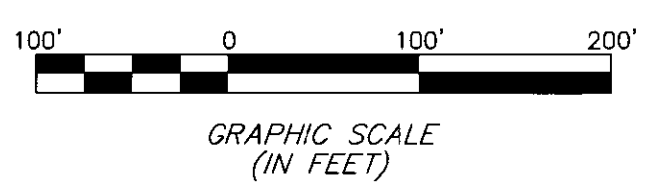
I:\CMHDATA1\SURVEY\PROJECT\20062116\DWG\62116B\3.DWG<18X24 LANDSCAPE> - NO XREFS - LAST SAVED BY HKING [5/18/2007 9:48:58 AM] - PLOTTED BY HKING [5/18/2007 9:48:59 AM]



BASIS OF BEARINGS:
 Bearings are based on the Ohio State Plane Coordinate System, South Zone, as per NAD83 (1986 Adjustment). Control for bearings was from coordinates of monuments FCGS 0005 RESET and FCGS 0006, having a bearing of North $23^{\circ} 37' 07''$ West, established by the Franklin County Engineering Department, using Global Positioning System procedures and equipment.

NOTE:
 This survey was prepared from existing records and an actual field survey performed in December, 2006.

- = STONE FND.
 - = MON. FND.
 - = I.P. FND.
 - = I.P. SET
 - = MAG. NAIL FND.
 - = MAG. NAIL SET
 - ▲ = R.R. SPK. FND.
 - ▲ = R.R. SPK. SET
 - = P.K. NAIL FND.
- I.P. Set are 13/16" I.D. iron pipe with cap inscribed EMHT INC



Heather L. King 5/17/07
 Professional Surveyor No. 8307

EMHT		Date: May 17, 2007
Evans, Mechwart, Hambleton & Tilton, Inc. Engineers • Surveyors • Planners • Scientists 5500 New Albany Road, Columbus, OH 43054 Phone: 614.775.4500 Fax: 614.775.4800		Scale: 1" = 100'
		Job No: 2006-2116
		Sheet: 1 of 1
REVISIONS		
MARK	DATE	DESCRIPTION