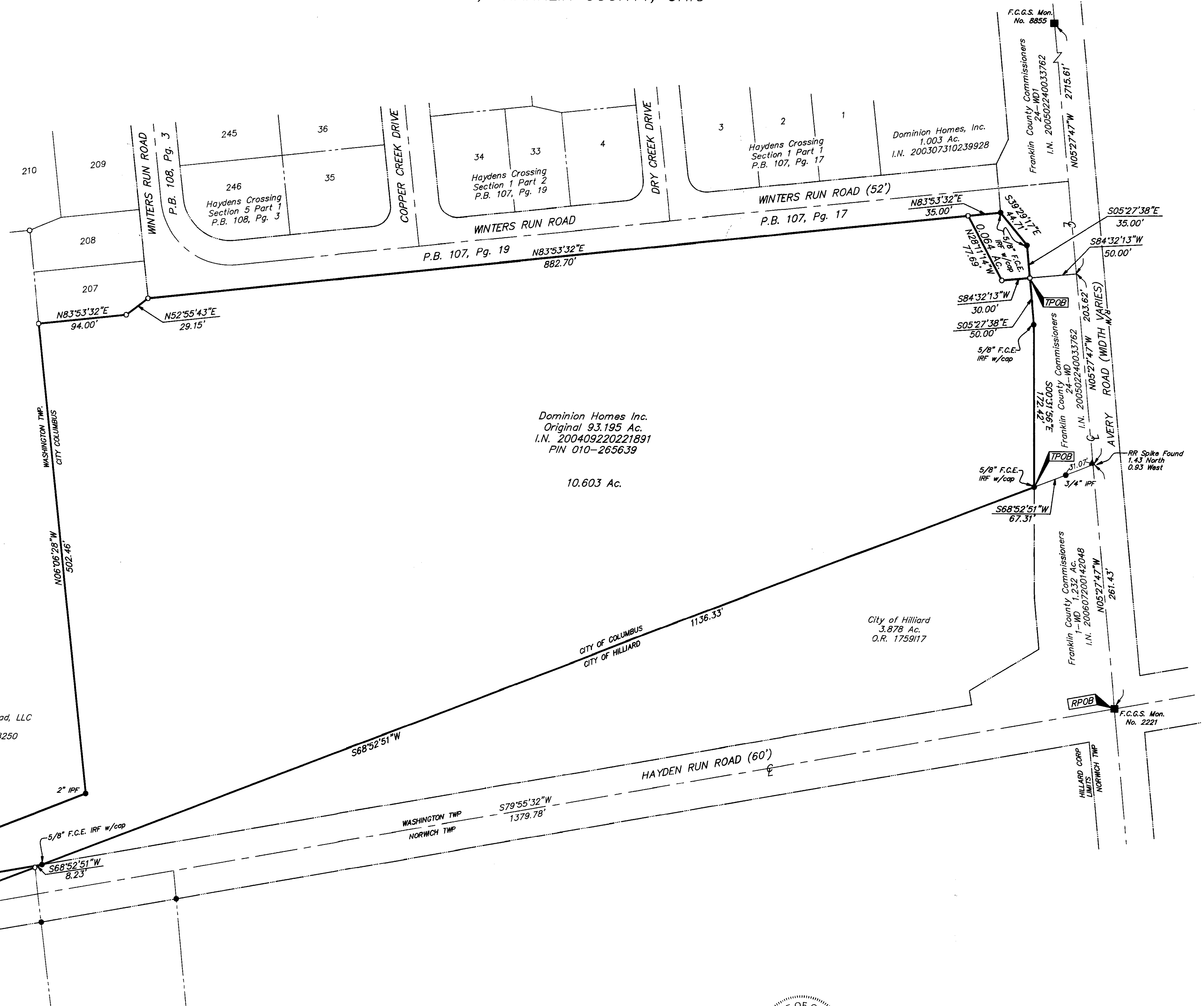


**SURVEY OF ACREAGE PARCELS**  
**VIRGINA MILITARY SURVEY 3453**  
**CITY OF COLUMBUS, FRANKLIN COUNTY, OHIO**



**RECEIVED**  
 JAN 18 2008  
 Franklin County Engineer  
 Dean C. Ringle, P.E., P.S.



**BASIS OF BEARINGS:** Bearings are based on the Ohio State Plane Coordinate System - South Zone as per NAD83. Control for bearings was from coordinates of monuments FCGS 8876 & FCGS 2221, having a bearing of North 88°53'20" East, established by the Franklin County Engineering Department, using Global Positioning System procedures and equipment.

By:   
 Professional Surveyor No. 8250

<b>EMHT</b>		Date: January 15, 2008
Evans, Mechwart, Hambleton & Tibon, Inc. Engineers • Surveyors • Planners • Scientists 5500 New Albany Road, Columbus, OH 43254 Phone: 614.775.4500 Fax: 614.775.4800		Scale: 1" = 60'
Job No: 2007-2416		Sheet: 1 of 1
REVISIONS		
MARK	DATE	DESCRIPTION