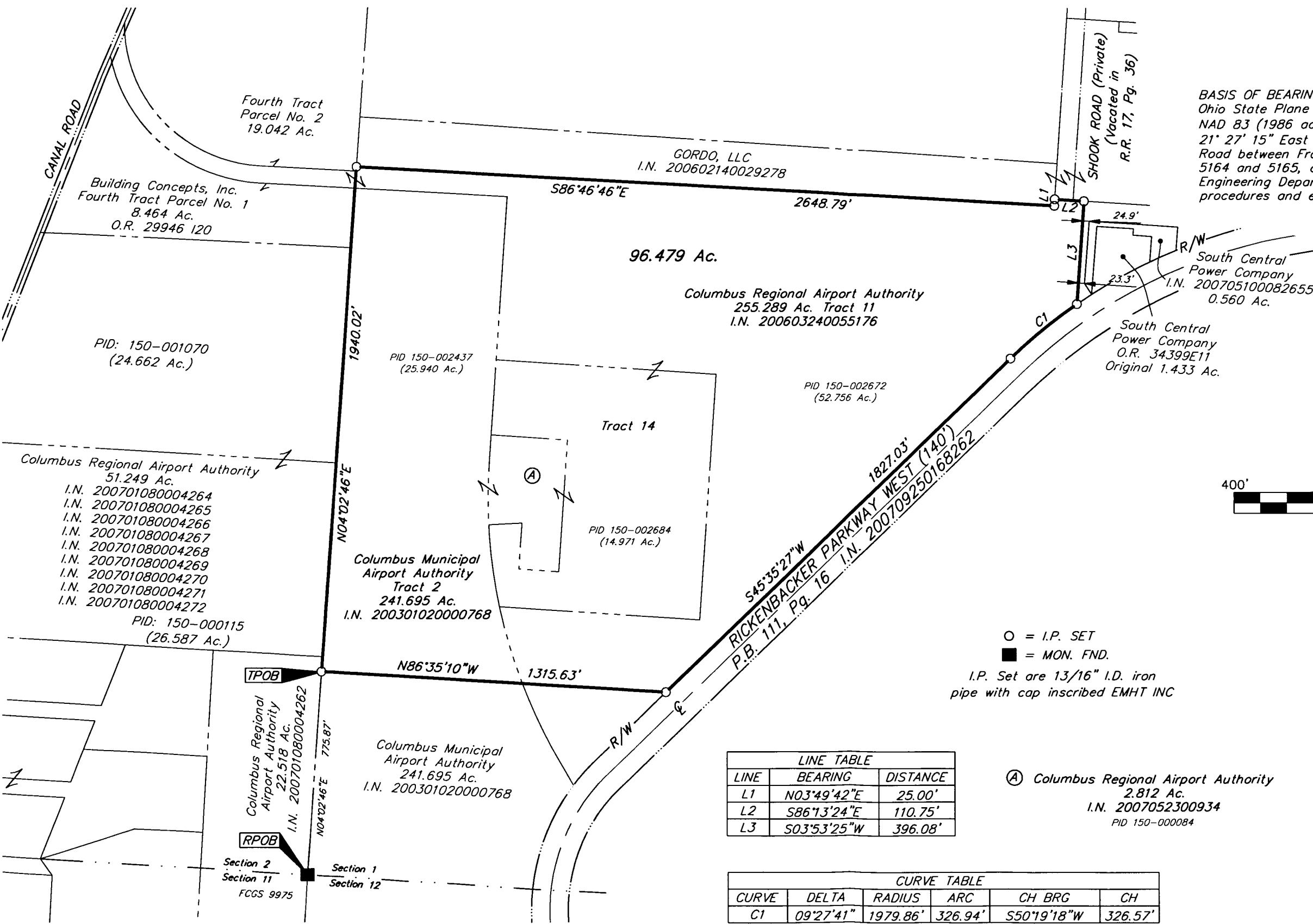


SURVEY OF ACREAGE PARCEL
SECTION 1, TOWNSHIP 3, RANGE 22
CONGRESS LANDS
 HAMILTON TOWNSHIP, FRANKLIN COUNTY, OHIO

Date: January 23, 2008
 Scale: 1" = 400'
 Job No: 2006-1575



BASIS OF BEARINGS: The bearings herein are based on Ohio State Plane Coordinate System—South Zone as per NAD 83 (1986 adjustment). Control for bearings was North 21° 27' 15" East for a portion of the centerline of Canal Road between Franklin County Geodetic Survey Monuments 5164 and 5165, as established by the Franklin County Engineering Department using Global Positioning System procedures and equipment.



GRAPHIC SCALE (IN FEET)

○ = I.P. SET
 ■ = MON. FND.
 I.P. Set are 13/16" I.D. iron pipe with cap inscribed EMHT INC

LINE TABLE

LINE	BEARING	DISTANCE
L1	N03°49'42"E	25.00'
L2	S86°13'24"E	110.75'
L3	S03°53'25"W	396.08'

CURVE TABLE

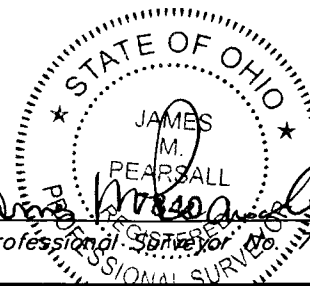
CURVE	DELTA	RADIUS	ARC	CH BRG	CH
C1	09°27'41"	1979.86'	326.94'	S50°19'18"W	326.57'

Ⓐ Columbus Regional Airport Authority
 2.812 Ac.
 I.N. 2007052300934
 PID 150-000084

RECEIVED

JAN 24 2008

Franklin County Engineer
 Dean C. Rindole PE,PS.



By *James M. Pearsall* 1/23/08
 Professional Surveyor No. 480