

ACREAGE SUMMARY

TOTAL	4.901 ACRES
TRACT 1	0.152 ACRES
REMAINDER	4.749 ACRES

DESCRIPTION

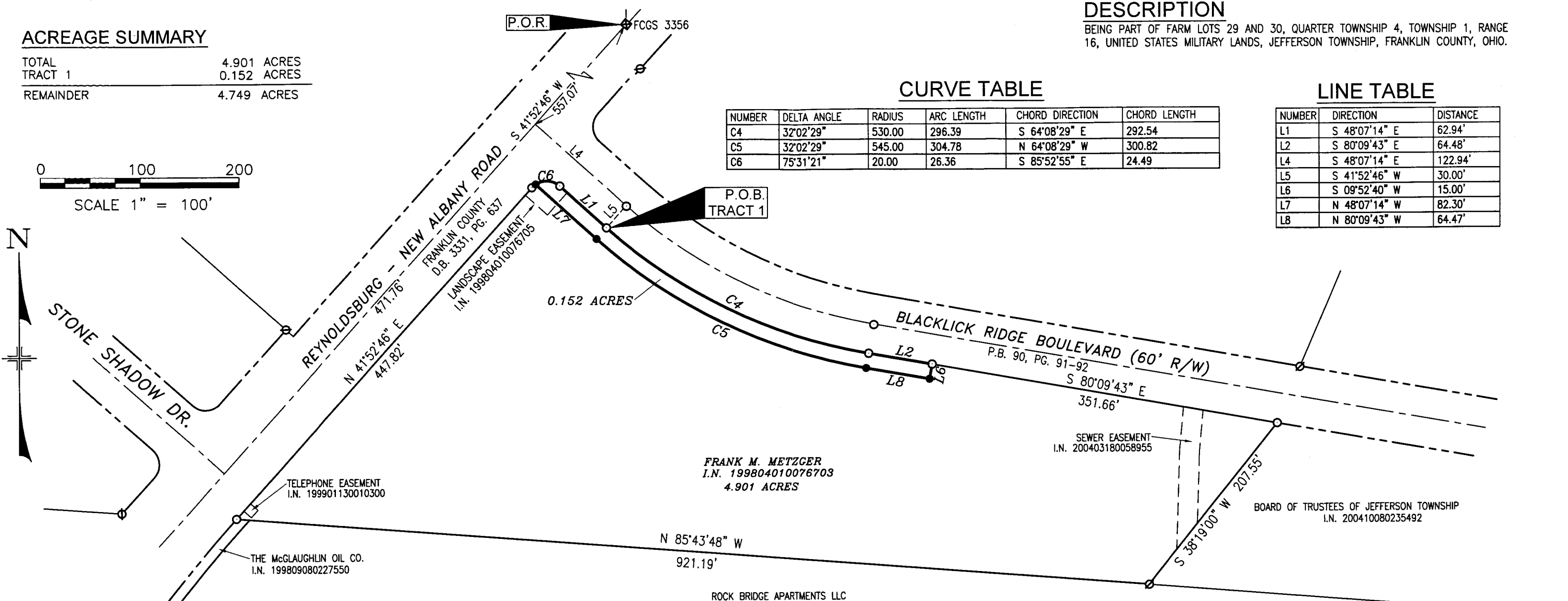
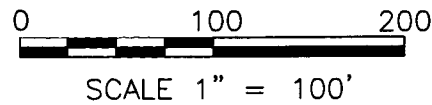
BEING PART OF FARM LOTS 29 AND 30, QUARTER TOWNSHIP 4, TOWNSHIP 1, RANGE 16, UNITED STATES MILITARY LANDS, JEFFERSON TOWNSHIP, FRANKLIN COUNTY, OHIO.

CURVE TABLE

NUMBER	DELTA ANGLE	RADIUS	ARC LENGTH	CHORD DIRECTION	CHORD LENGTH
C4	32°02'29"	530.00	296.39	S 64°08'29" E	292.54
C5	32°02'29"	545.00	304.78	N 64°08'29" W	300.82
C6	75°31'21"	20.00	26.36	S 85°52'55" E	24.49

LINE TABLE

NUMBER	DIRECTION	DISTANCE
L1	S 48°07'14" E	62.94'
L2	S 80°09'43" E	64.48'
L4	S 48°07'14" E	122.94'
L5	S 41°52'46" W	30.00'
L6	S 09°52'40" W	15.00'
L7	N 48°07'14" W	82.30'
L8	N 80°09'43" W	64.47'



LEGEND

FOUND	SET	
○	●	5/8" IRON PIN, UNLESS NOTED
⊙	⊙	5/8" IRON PIPE, UNLESS NOTED
△	▲	RAILROAD SPIKE
⊠		MONUMENT BOX

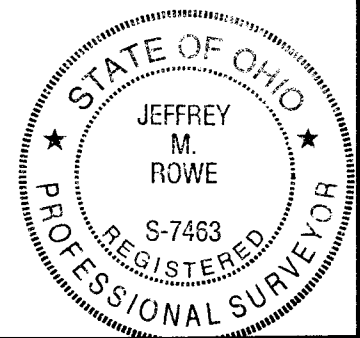
NOTES

- ALL IRON PINS SET ARE 5/8" x 30" LONG REINFORCING RODS WITH YELLOW PLASTIC CAPS STAMPED "MAKEEVER AND ASSOC." UNLESS OTHERWISE NOTED.
- BEARINGS SHOWN HEREON ARE BASED ON GPS OBSERVATIONS USING THE OHIO CORS NETWORK, SOUTH ZONE TO DETERMINE A GRID BEARING IN NAD 83 SYSTEM. THE UNION COUNTY CORS ARP, COLUMBUS CORS ARP AND LICKING COUNTY CORS ARP BASE STATIONS WHERE USED IN DETERMINING THE GRID BEARING AND ESTABLISHING A BEARING OF SOUTH 41°52'46" WEST FOR THE CENTERLINE OF REYNOLDSBURG-NEW ALBANY ROAD.
- THE PROPERTY SHOWN HEREON THIS PLAT OF SURVEY IS SUBJECT TO ALL HIGHWAYS, EASEMENTS, AND RESTRICTIONS OF RECORD. THIS SURVEY IS NOT INTENDED TO SHOW EASEMENTS AFFECTING THE PROPERTY.

SURVEYOR'S STATEMENT

WE HEREBY STATE TO CONTINENTAL BUILDERS, INC. THAT THE DRAWING HEREIN IS REPRESENTATIVE OF AN ACTUAL SURVEY PERFORMED IN JANUARY, 2008, BY MYSELF OR UNDER MY DIRECT SUPERVISION AND THAT ALL INFORMATION IS TRUE AND CORRECT TO THE BEST OF MY KNOWLEDGE AND BELIEF.

JEFFREY M. ROWE, P.S.
PROFESSIONAL SURVEYOR NO. 7463
DATE: 1-8-2008



S:\2006\042\006\2006-042-006.DWG

Makeever & Associates, Inc.
P.O. BOX 325, 1810 E. MANSFIELD ST.
BUCYRUS, OHIO 44820

ENGINEERS * SURVEYORS
Phone: (419) 562-7757
Fax: (419) 562-4717

ASSISTANTS:
SCOTT ROWE
ANDY ROWE
DRAWN BY: BRT
FILE NO: 06-042

PLAT OF SURVEY FOR:

CONTINENTAL BUILDERS, INC.