

I-5-E



Evans, Mechwart, Hambleton & Tilton, Inc.
Engineers • Surveyors • Planners • Scientists
5500 New Albany Road, Columbus, OH 43054
Phone: 614.775.4500 Fax: 614.775.4800

SURVEY OF ACREAGE PARCEL

SECTION 15, QUARTER TOWNSHIP 2, TOWNSHIP 2, RANGE 16

UNITED STATES MILITARY LANDS

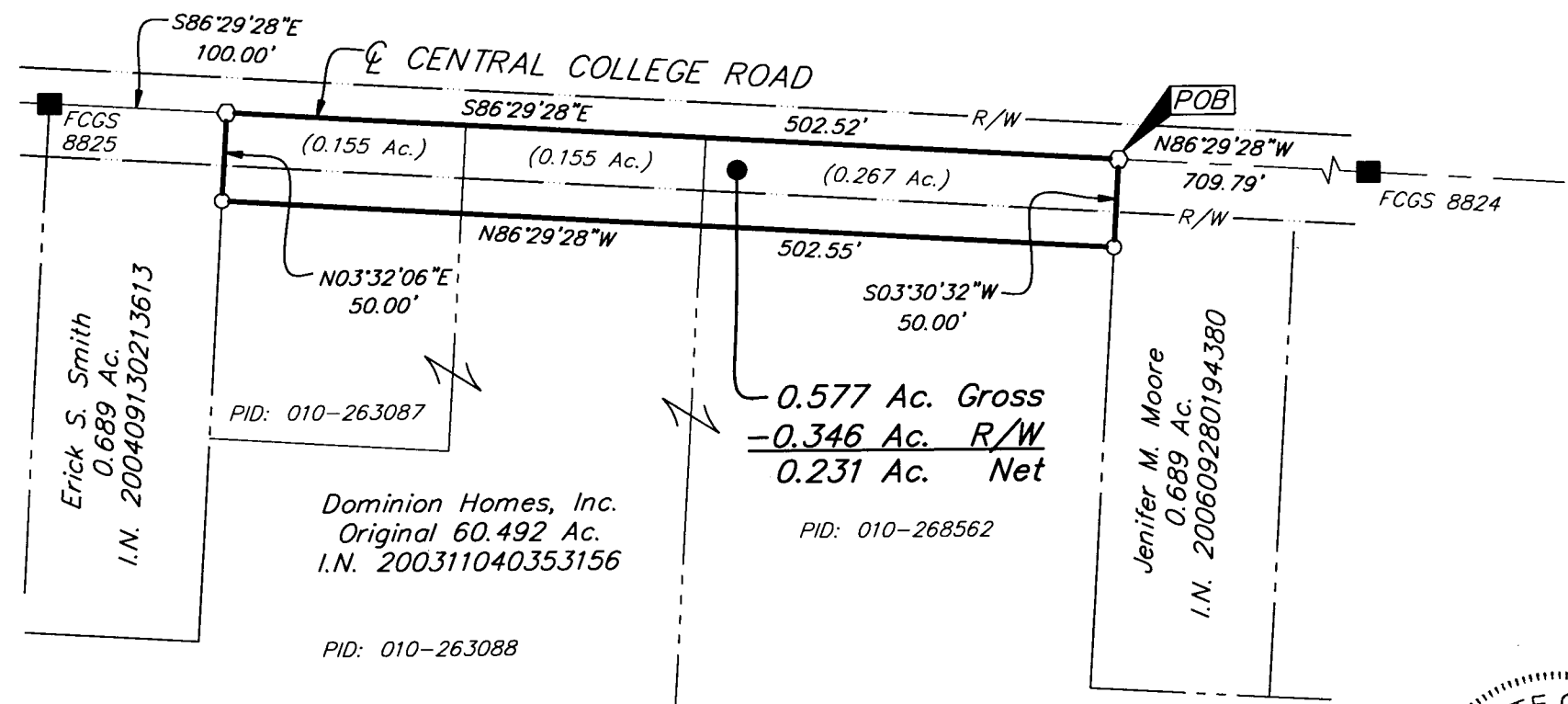
CITY OF COLUMBUS, FRANKLIN COUNTY, OHIO

Date: February 15, 2006

Scale: 1" = 100'

Job No: 2005-0184

\\CMH01A1\SURVEY\PROJ\20050184\DWG\50184BV.DWG-LEGAL LAND (2) - NO XREFS - LAST SAVED BY THEBB [2/15/2006 1:00:33 PM] - PLOTTED BY THEBB [2/16/2006 1:00:54 PM]



- = 1/2" I.P. FND.
- = MON. FND.
- = 3/4" I.P. FND.
- = I.P. SET
- = MAG. NAIL FND.
- = MAG. NAIL SET
- ▲ = R.R. SPK. FND.
- △ = R.R. SPK. SET
- ◆ = P.K. NAIL FND.

I.P. Set are 13/16" I.D. iron pipe with cap inscribed EMHT INC



GRAPHIC SCALE (IN FEET)

BASIS OF BEARINGS: Bearings are based on North 86°29'28" West for the centerline of Central College Road between FCGS Monument Numbers 8824 & 8825 as shown on the "Centerline Survey Plat" for said Central College Road dated 22 August 2002 and on file at the Franklin County Engineer's Office.



By _____
Professional Surveyor No. 8250