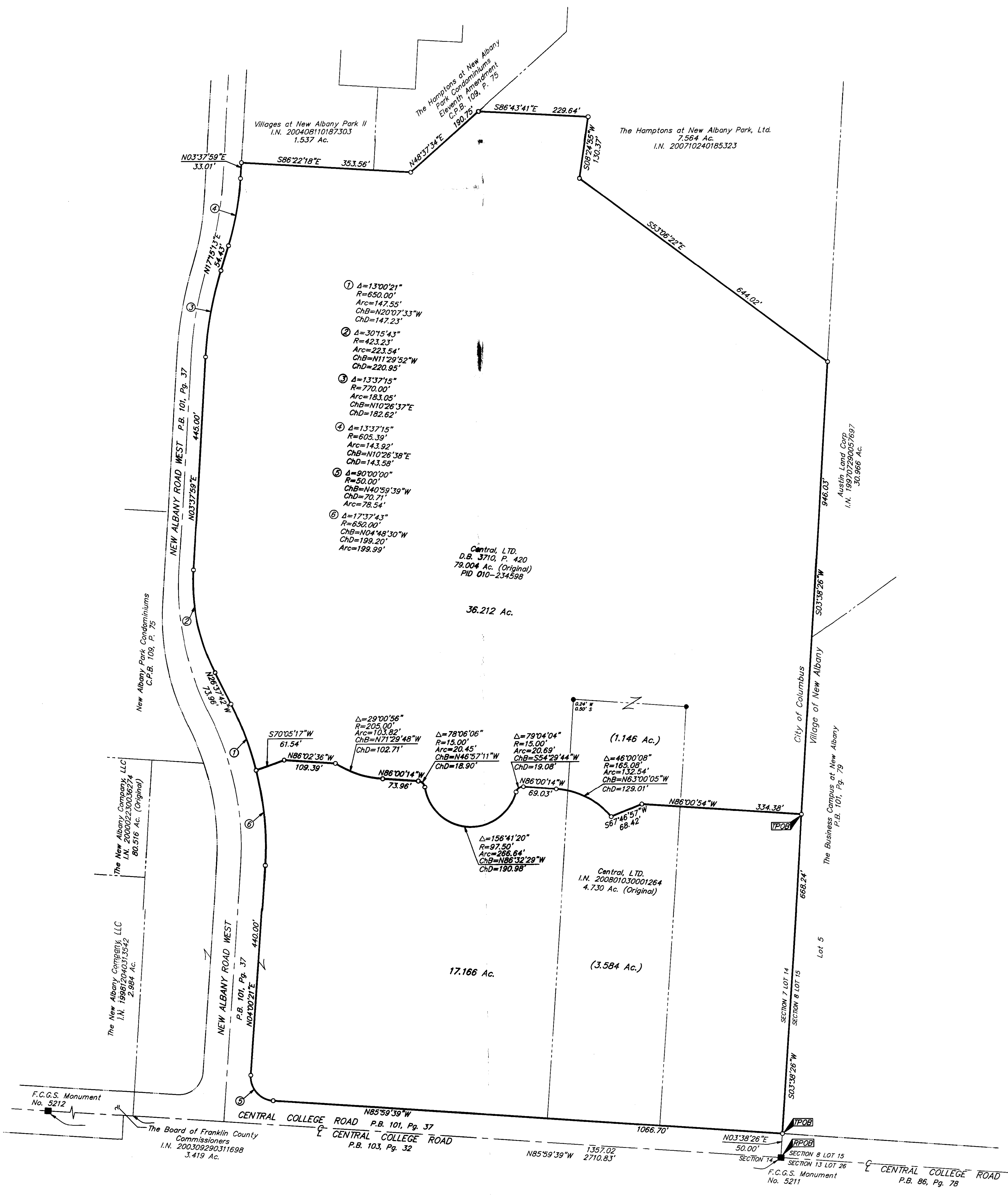
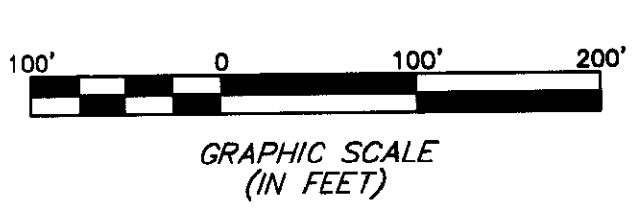


**SURVEY OF ACREAGE PARCELS**  
**SECTION 7, QUARTER TOWNSHIP 2, TOWNSHIP 2, RANGE 16**  
**UNITED STATES MILITARY LANDS**  
**CITY OF COLUMBUS, FRANKLIN COUNTY, OHIO**

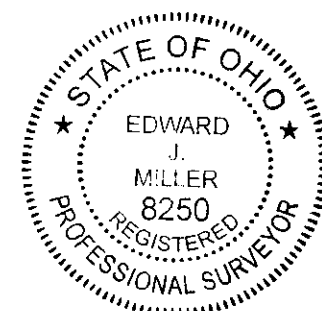


● = STONE FND.  
 ■ = MON. FND.  
 ○ = I.P. FND.  
 ○ = I.P. SET  
 ● = MAG. NAIL FND.  
 ○ = MAG. NAIL SET  
 ▲ = R.R. SPK. FND.  
 ▲ = R.R. SPK. SET  
 ● = P.K. NAIL FND.  
 I.P. Set are 1 3/16" I.D. iron pipe with cap inscribed EMHT INC



Bearings are based on the Ohio State Plane Coordinate System South Zone as per NAD 83 (1986 Adjustment). Control for bearings was from coordinates of Franklin County Geodetic Survey Monument Nos. 5574 and 5113, with a portion of the centerline of Central College Road having a bearing of South 86° 09' 36" East, as established by the Franklin County Engineering Department.

By: *[Signature]*  
 Professional Surveyor No. 8250



**RECEIVED**  
 JAN 14 2008  
 Franklin County Engineer  
 Dean C. Fingle, P.E., F.S.

<b>EMHT</b>		Date: January 7, 2008
Evans, Mechwart, Hambleton & Tilton, Inc. Engineers • Surveyors • Planners • Scientists 350 New Albany Road, Columbus, OH 43204 Phone: 614.775.4800 Fax: 614.775.4800		Scale: 1" = 100'
M C M X X V		Job No: 2008-0033
		Sheet: 1 of 1
REVISIONS		
MARK	DATE	DESCRIPTION

I:\CADD\11\PROJECT\20080033\DWG\80033B\DWG\24X36\PRINT\17.DWG - LAST SAVED BY: JMASTON [1/11/2008 1:25:19 PM] - PLOTTED BY: JMASTON [1/11/2008 1:25:19 PM] - NO XREFS -