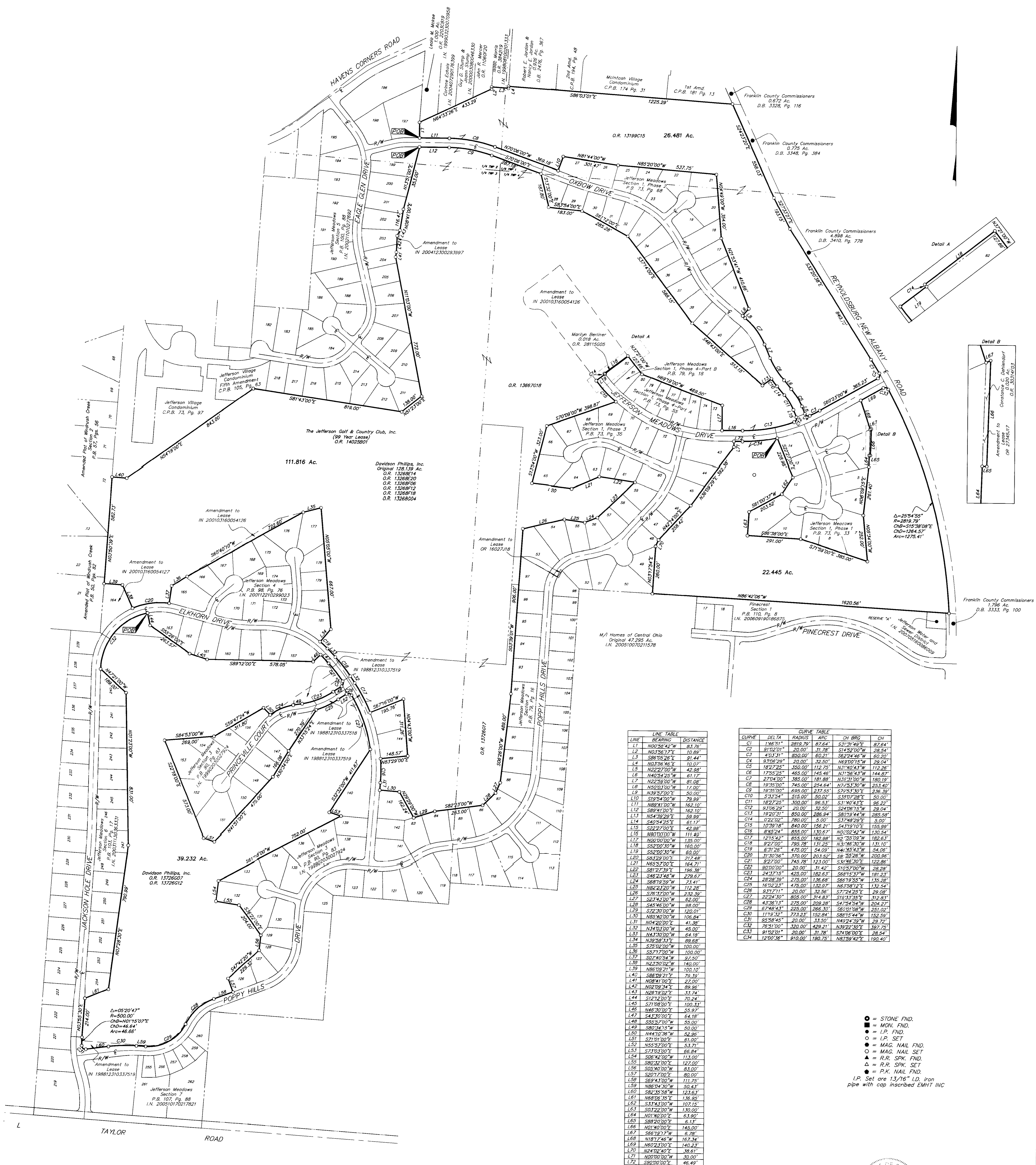


SURVEY OF ACREAGE PARCEL
QUARTER TOWNSHIPS 1, 2, 3 & 4, TOWNSHIP 1, RANGE 16
UNITED STATES MILITARY LANDS
JEFFERSON TOWNSHIP, FRANKLIN COUNTY, OHIO

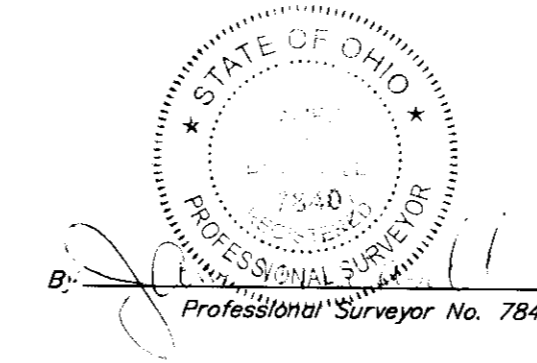


LINE	BEARING	DISTANCE
L1	N00°26'42"W	63.76
L2	N14°13'11"E	112.67
L3	S88°56'26"E	101.44
L4	N03°56'46"E	102.07
L5	N02°27'00"W	63.89
L6	N40°24'25"E	61.17
L7	N02°28'00"W	61.08
L8	N02°28'00"W	61.08
L9	N38°22'00"E	50.00
L10	N02°28'00"W	61.08
L11	N89°21'00"W	162.10
L12	S89°21'00"W	162.10
L13	N02°28'00"W	61.08
L14	S49°24'25"E	61.17
L15	N02°28'00"W	61.08
L16	N01°01'00"W	111.45
L17	N02°28'00"W	162.10
L18	N02°28'00"W	162.10
L19	S49°24'25"E	61.17
L20	N02°28'00"W	61.08
L21	N65°22'00"E	164.71
L22	S81°27'39"E	196.38
L23	S48°24'42"W	228.07
L24	S68°18'59"W	71.41
L25	N68°21'20"W	112.26
L26	S01°21'00"W	242.50
L27	S02°41'00"W	62.00
L28	S84°40'00"W	80.00
L29	S72°30'00"W	120.01
L30	N02°40'00"W	108.84
L31	N04°20'00"E	41.96
L32	N14°13'00"W	45.00
L33	N41°41'00"E	84.18
L34	N38°58'41"E	68.68
L35	S78°19'00"W	100.00
L36	S07°17'00"W	100.00
L37	S07°40'54"W	87.50
L38	N42°00'00"W	140.00
L39	N86°10'21"W	100.00
L40	S88°09'21"E	79.32
L41	N08°41'00"E	22.00
L42	N02°02'34"E	89.96
L43	N48°18'00"E	33.74
L44	S07°41'00"E	70.24
L45	S71°09'00"E	100.31
L46	N48°18'00"E	65.97
L47	S43°10'00"E	64.18
L48	S50°37'00"W	55.00
L49	S08°14'15"W	50.00
L50	N44°12'36"W	52.86
L51	S71°09'00"E	61.00
L52	N55°22'00"E	54.71
L53	S71°09'00"E	66.84
L54	S08°14'15"W	71.00
L55	S00°32'00"E	127.00
L56	S08°46'00"E	140.23
L57	S07°17'00"W	80.00
L58	S62°41'00"W	112.25
L59	N08°14'10"E	50.45
L60	S82°35'58"W	123.63
L61	N08°14'10"E	140.23
L62	S31°43'00"W	109.75
L63	S01°22'00"W	180.00
L64	N01°40'00"E	63.80
L65	S88°20'00"E	61.17
L66	N01°40'00"E	140.00
L67	S61°17'17"E	61.20
L68	N18°17'46"W	167.34
L69	N02°23'00"E	140.23
L70	N24°32'40"E	36.61
L71	N02°28'00"W	30.00
L72	S80°00'00"E	46.41

CURVE	DELTA	RADIUS	ARC	CH BRG	CH
C1	146°01'	2819.79	87.64	S31°19'40"E	87.64
C2	81°02'01"	20.00	37.02	S14°52'00"W	28.54
C3	43°31'31"	850.00	60.27	S62°24'46"W	60.20
C4	87°08'24"	210.00	39.60	N42°05'15"W	29.24
C5	18°27'28"	350.00	112.70	N11°40'43"E	112.28
C6	17°02'28"	480.00	145.46	N11°56'43"W	144.87
C7	27°04'00"	580.00	181.88	N5°19'00"W	180.19
C8	10°16'00"	740.00	254.64	N7°53'30"W	253.40
C9	16°35'00"	610.00	227.50	S72°51'30"E	226.39
C10	53°17'54"	510.00	50.00	S30°02'00"E	50.00
C11	18°27'28"	350.00	66.53	S31°40'43"E	66.52
C12	81°08'24"	210.00	32.00	S48°05'15"W	28.54
C13	10°20'31"	850.00	286.84	S83°19'44"W	285.58
C14	17°21'00"	780.00	130.00	S77°48'20"E	130.00
C15	10°19'18"	610.00	106.71	S47°19'10"E	105.89
C16	8°45'24"	850.00	130.67	N51°02'42"W	130.74
C17	17°15'51"	810.00	186.38	N5°35'00"W	184.41
C18	S72°00"	780.28	131.23	N5°46'30"W	131.10
C19	43°11'00"	470.00	54.09	N46°45'43"W	54.08
C20	31°00'56"	510.00	84.52	N5°35'00"W	82.86
C21	S72°00"	740.78	123.00	S34°46'30"E	122.86
C22	90°00'00"	20.00	31.47	S10°37'00"W	28.28
C23	54°12'15"	420.00	108.63	S68°13'17"E	107.81
C24	28°28'39"	278.00	136.68	S64°19'55"W	135.78
C25	N01°02'31"	430.00	133.07	N61°08'22"E	132.84
C26	83°17'11"	20.00	32.56	S77°24'25"E	29.08
C27	24°24'30"	850.00	114.81	S13°13'16"E	112.81
C28	41°06'14"	420.00	109.88	S4°54'44"W	104.72
C29	67°48'43"	425.00	266.42	S63°01'08"W	261.02
C30	11°19'14"	773.23	155.84	S83°14'44"W	156.27
C31	84°58'45"	20.00	31.50	N42°24'19"W	28.27
C32	28°31'00"	340.00	429.71	N39°20'30"E	387.73
C33	91°02'04"	80.00	17.77	S74°08'00"E	26.41
C34	12°00'36"	810.00	180.29	N83°39'42"E	180.40

- = STONE FND.
 - = MON. FND.
 - = I.P. FND.
 - = I.P. SET
 - = MAG. NAIL FND.
 - = MAG. NAIL SET
 - ▲ = R.R. SPK. FND.
 - ▲ = R.R. SPK. SET
 - = P.K. NAIL FND.
- I.P. Set over 1/16" I.D. iron pipe with cap inscribed EMHT INC

BASIS OF BEARINGS:
 The bearings herein are based on South 60° 23' 00" West for a portion of the centerline of Jefferson Meadows Drive, as shown on the plan of "Jefferson Meadows, Section 1 Phase 1", a subdivision of record in Plot Book 73, Page 33, Recorder's Office, Franklin County, Ohio.



EMHT	Date: November 28, 2007
Events, Mechanics, Hampton & Olson, Inc. Engineers & Surveyors - Professional Services 3500 New Albany Road, Columbus, OH 43264 Phone: (614) 450-0000	Scale: 1" = 200'
Job No: 2007-2451	Sheet: 1 of 1
REVISIONS	
MARK	DATE DESCRIPTION