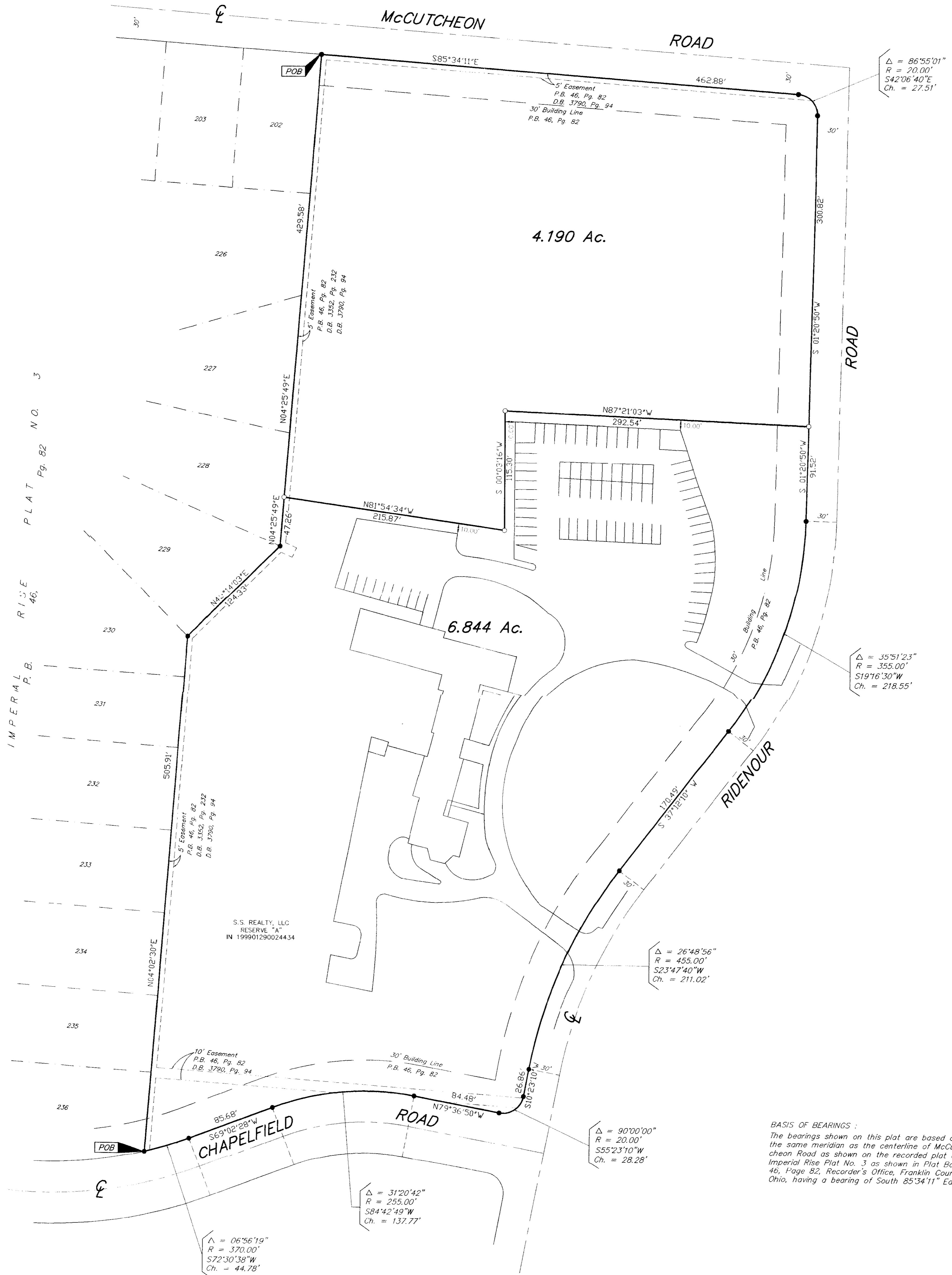


SURVEY OF
Reserve "A"
"IMPERIAL RISE PLAT NO. 3"
Quarter Township 1, Township 1, Range 17
United States Military Lands
City Of Gahanna, Franklin County, Ohio



BASIS OF BEARINGS :
The bearings shown on this plat are based on the same meridian as the centerline of McCutcheon Road as shown on the recorded plat of Imperial Rise Plat No. 3 as shown in Plat Book 46, Page 82, Recorder's Office, Franklin County, Ohio, having a bearing of South 85°34'11" East.

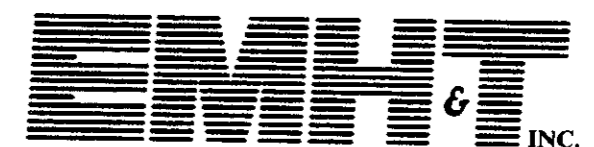
- = STONE FND.
- = MON. FND.
- = I.P. FND.
- = I.P. SET
- = MAG. NAIL FND.
- = MAG. NAIL SET
- ▲ = R.R. SPK. FND.
- △ = R.R. SPK. SET
- = P.K. NAIL FND.

I.P.S. Set are 1 3/16" I.D. Iron pipe w/ cap inscribed EMHT INC

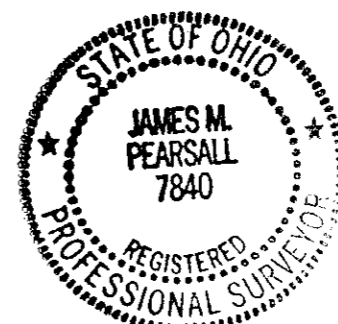


GRAPHIC SCALE (IN FEET)

Surveyed & Prepared By



ENGINEERS, SURVEYORS, PLANNERS, SCIENTISTS
EVANS, MECHWART, HAMBLETON & TILTON, INC.
170 MILL STREET, GAHANNA, OHIO 43230-3036
TEL: 614-471-5150 • FAX: 614-471-9286



By *James M. Pearsall* 4/29/03
Professional Surveyor No. 7840

SCALE: 1" = 50' APRIL 29, 2003