



Evans, Mechwart, Hambleton & Tilton, Inc.
 Engineers • Surveyors • Planners • Scientists
 5500 New Albany Road, Columbus, OH 43054
 Phone: 614.775.4500 Fax: 614.775.4800

SURVEY OF ACREAGE PARCEL

VIRGINIA MILITARY SURVEY No. 7065

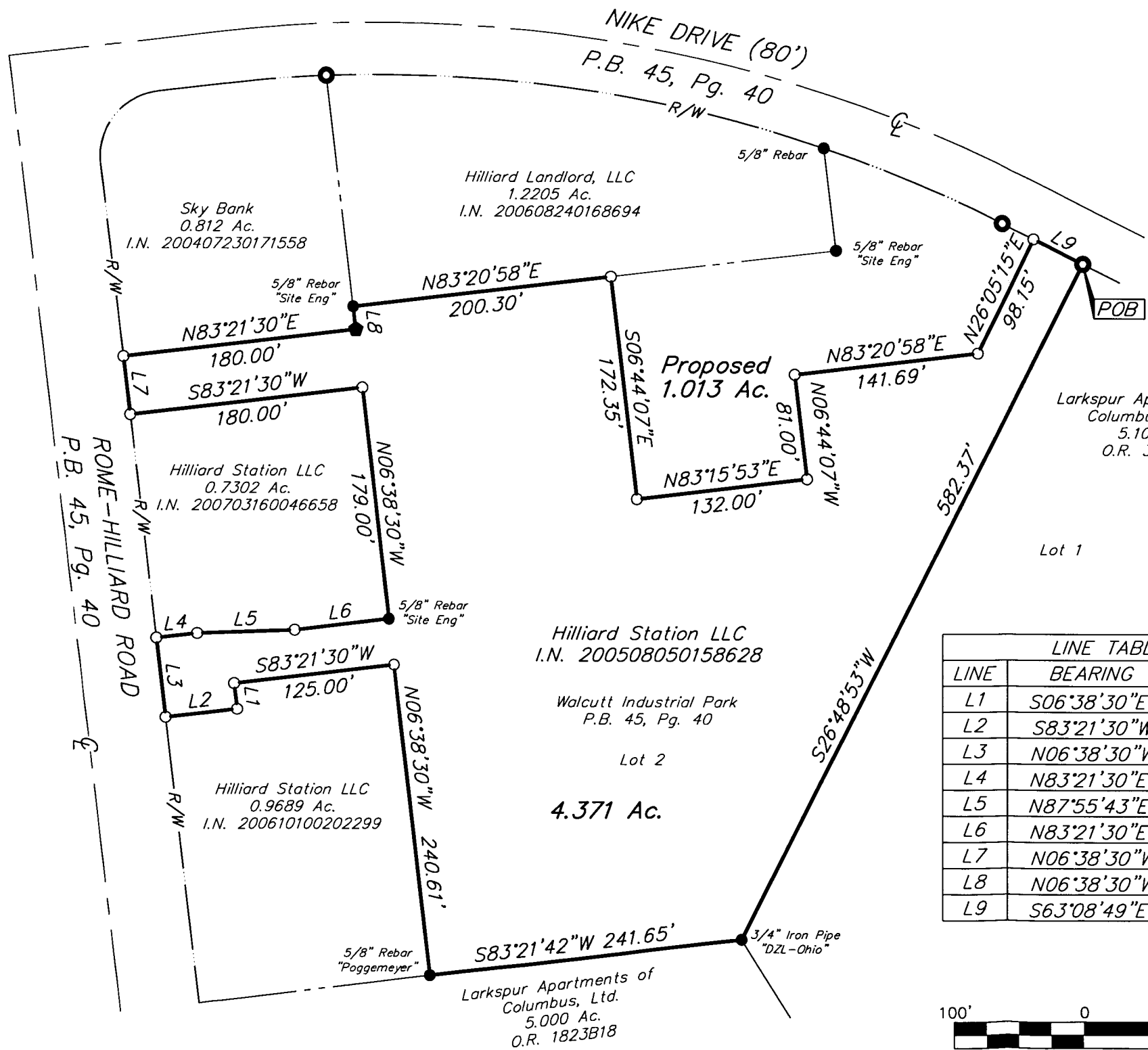
CITY OF COLUMBUS, FRANKLIN COUNTY, OHIO

Date: November 14, 2007

Scale: 1" = 100'

Job No: 2007-2362

BASIS OF BEARINGS: Bearings are based on the Ohio State Plane Coordinate System as per NAD83, South Zone (1986 Adjustment) with the bearing of South 07° 13' 58" East for a portion of the centerline of Hilliard-Rome Road as established from a series of GPS field observations performed in February, 2003.

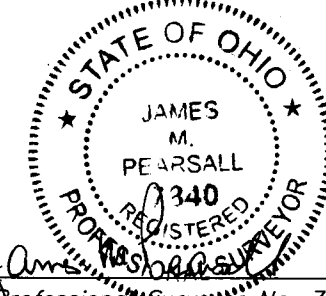


LINE TABLE		
LINE	BEARING	DISTANCE
L1	S06°38'30"E	20.00'
L2	S83°21'30"W	55.00'
L3	N06°38'30"W	61.50'
L4	N83°21'30"E	31.29'
L5	N87°55'43"E	75.30'
L6	N83°21'30"E	73.65'
L7	N06°38'30"W	45.00'
L8	N06°38'30"W	17.77'
L9	S63°08'49"E	42.57'

- = DRILL HOLE FND
 - = I.P. FND.
 - = I.P. SET
 - ◆ = P.K. NAIL FND.
- I.P. Set are 13/16" I.D. iron pipe with cap inscribed EMHT INC



GRAPHIC SCALE (IN FEET)



By James M. Pearsall 11/14/07
 Professional Surveyor No. 7840