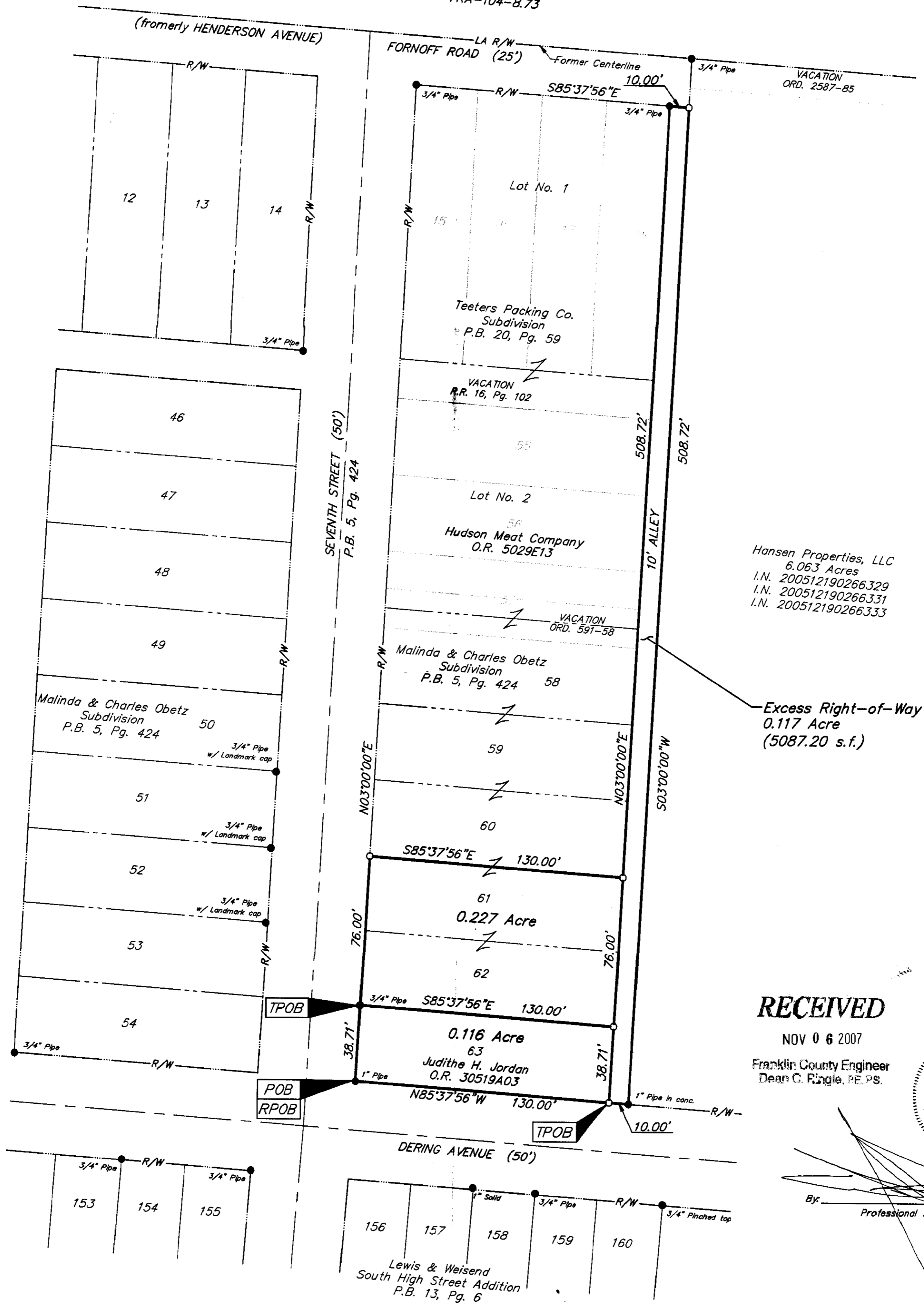


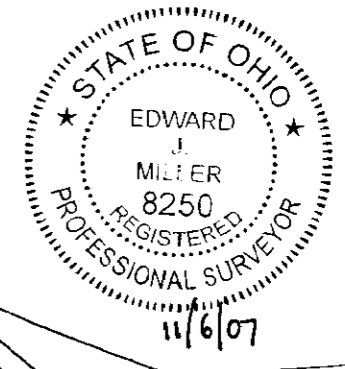
**SURVEY OF ACREAGE PARCELS**  
**SECTION 4, TOWNSHIP 4, RANGE 22, MATTHEWS SURVEY**  
**CONGRESS LANDS EAST OF SCIOTO RIVER**  
**CITY OF COLUMBUS, FRANKLIN COUNTY, OHIO**

S.R. 104  
 FRA-104-8.73



**RECEIVED**

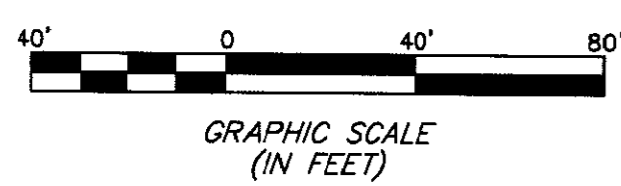
NOV 06 2007  
 Franklin County Engineer  
 Dean C. Ringle, PE, PS.



By: \_\_\_\_\_  
 Professional Surveyor No. 8250

- = STONE FND.
  - = MON. FND.
  - = I.P. FND.
  - = I.P. SET
  - = MAG. NAIL FND.
  - = MAG. NAIL SET
  - ▲ = R.R. SPK. FND.
  - △ = R.R. SPK. SET
  - = P.K. NAIL FND.
- I.P. Set are 13/16" I.D. iron pipe with cap inscribed EMHT INC

**BASIS OF BEARINGS:** Bearings are based on the same meridian as that subdivision entitled "Malinda & Charles Obetz Subdivision" of record in Plat Book 5, Page 424, having a bearing of North 03° 00' 00" East for the east line of the 10' alley east of Seventh Street, also being the east line of said subdivision.



<b>EMHT</b> Evans, Mechwart, Hambleton & Tilton, Inc. Engineers • Surveyors • Planners • Scientists 5500 New Albany Road, Columbus, OH 43054 Phone: 614.775.4500 Fax: 614.775.4800	Date: November 2, 2007	
	Scale: 1" = 40'	
	Job No: 2007-2150	
	Sheet: 1 of 1	
REVISIONS		
MARK	DATE	DESCRIPTION