



Evans, Mechwart, Hambleton & Tilton, Inc.  
Engineers • Surveyors • Planners • Scientists  
5500 New Albany Road, Columbus, OH 43054  
Phone: 614.775.4500 Fax: 614.775.4800

# SURVEY OF ACREAGE PARCEL

## QUARTER TOWNSHIP 3, TOWNSHIP 2, RANGE 19

### UNITED STATES MILITARY LANDS

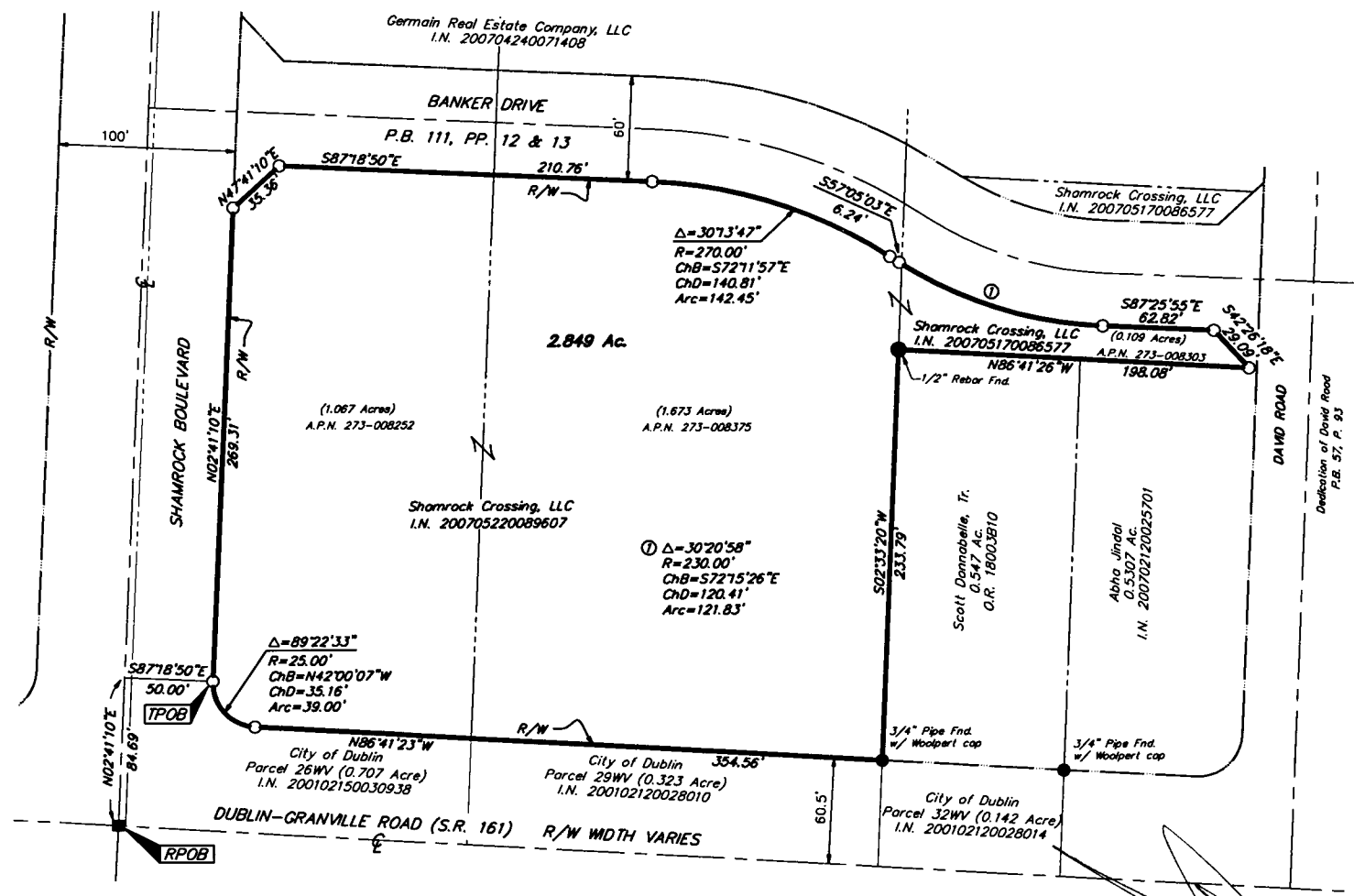
#### CITY OF DUBLIN, FRANKLIN COUNTY, OHIO

Date: October 10, 2007

Scale: 1" = 100'

Job No: 2007-2116

M C M X X V I



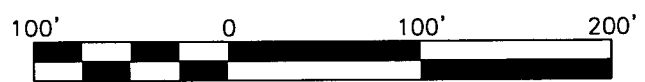
# RECEIVED

OCT 26 2007

Franklin County Engineer  
Dean C. Ringle, P.E., F.S.

- = STONE FND.
- = MON. FND.
- = I.P. FND.
- = I.P. SET
- ◆ = MAG. NAIL FND.
- = MAG. NAIL SET
- ▲ = R.R. SPK. FND.
- △ = R.R. SPK. SET
- ◆ = P.K. NAIL FND.

I.P. Set are 13/16" I.D. iron pipe with cap inscribed EMHT INC



GRAPHIC SCALE (IN FEET)

**BASIS OF BEARINGS:** Bearings are based on the Ohio State Plane Coordinate System, South Zone per NAD83 (1986 Adjustment). Control for bearings was from coordinates of monuments Frank 73 & Frank 74, established by the Franklin County Engineering Department, giving a bearing of South 86°41'23" East for a portion of Dublin-Granville Road (S.R. 161).

By Professional Surveyor No. 8250

C:\MHDATA\1\SURVEY\PROJECT\20072116\DWG\72116B\2.DWG<LEGAL LAND> - NO XREFS - LAST SAVED BY MRISLER [10/10/2007 2:06:07 PM] - PLOTTED BY MRISLER [10/10/2007 2:06:07 PM]