



Evans, Mechwart, Hambleton & Tilton, Inc.
 Engineers • Surveyors • Planners • Scientists
 5500 New Albany Road, Columbus, OH 43054
 Phone: 614.775.4500 Fax: 614.775.4800

M C M X X V I

RIGHT-OF-WAY EXHIBIT

SECTION 14, QUARTER TOWNSHIP 2, TOWNSHIP 2, RANGE 16

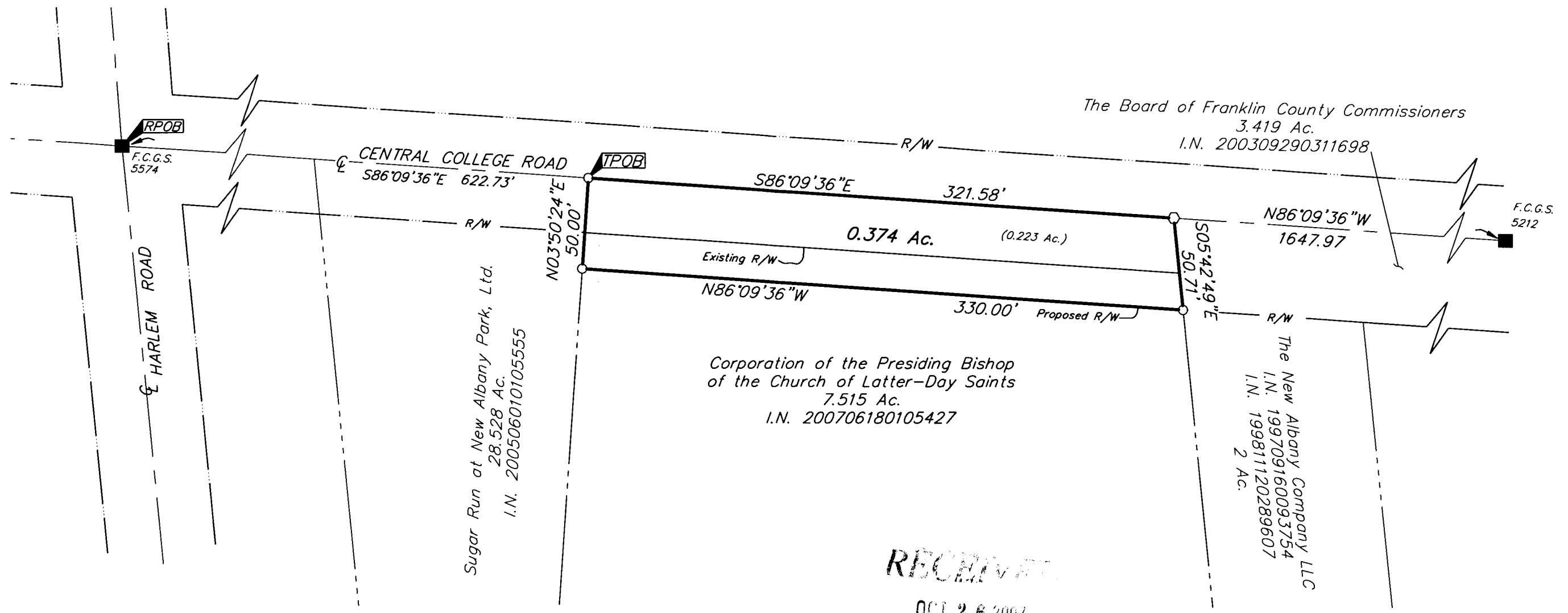
UNITED STATES MILITARY LANDS

CITY OF COLUMBUS, FRANKLIN COUNTY, OHIO

Date: October 3, 2007

Scale: 1" = 60'

Job No: 2007-1616



- = STONE FND.
- = MON. FND.
- = I.P. FND.
- = I.P. SET
- = MAG. NAIL FND.
- = MAG. NAIL SET
- ▲ = R.R. SPK. FND.
- △ = R.R. SPK. SET
- = P.K. NAIL FND.

I.P. Set are 13/16" I.D. iron pipe with cap inscribed EMHT INC



GRAPHIC SCALE
(IN FEET)

BASIS OF BEARINGS: Bearings are based on the Ohio State Plane Coordinate System as per NAD83 (1986 Adjustment). Control for bearings was from coordinates of monuments Frank 5574 and Frank 5113, with Central College Road having a bearing of South 86° 09' 36" East, established by the Franklin County Engineering Department, using Global Positioning System procedures and equipment.

RECEIVED
 OCT 26 2007
 Franklin County Engineer
 Dean C. Ringis, PE, RS.

10/26/07
 By _____
 Professional Surveyor No. 8250