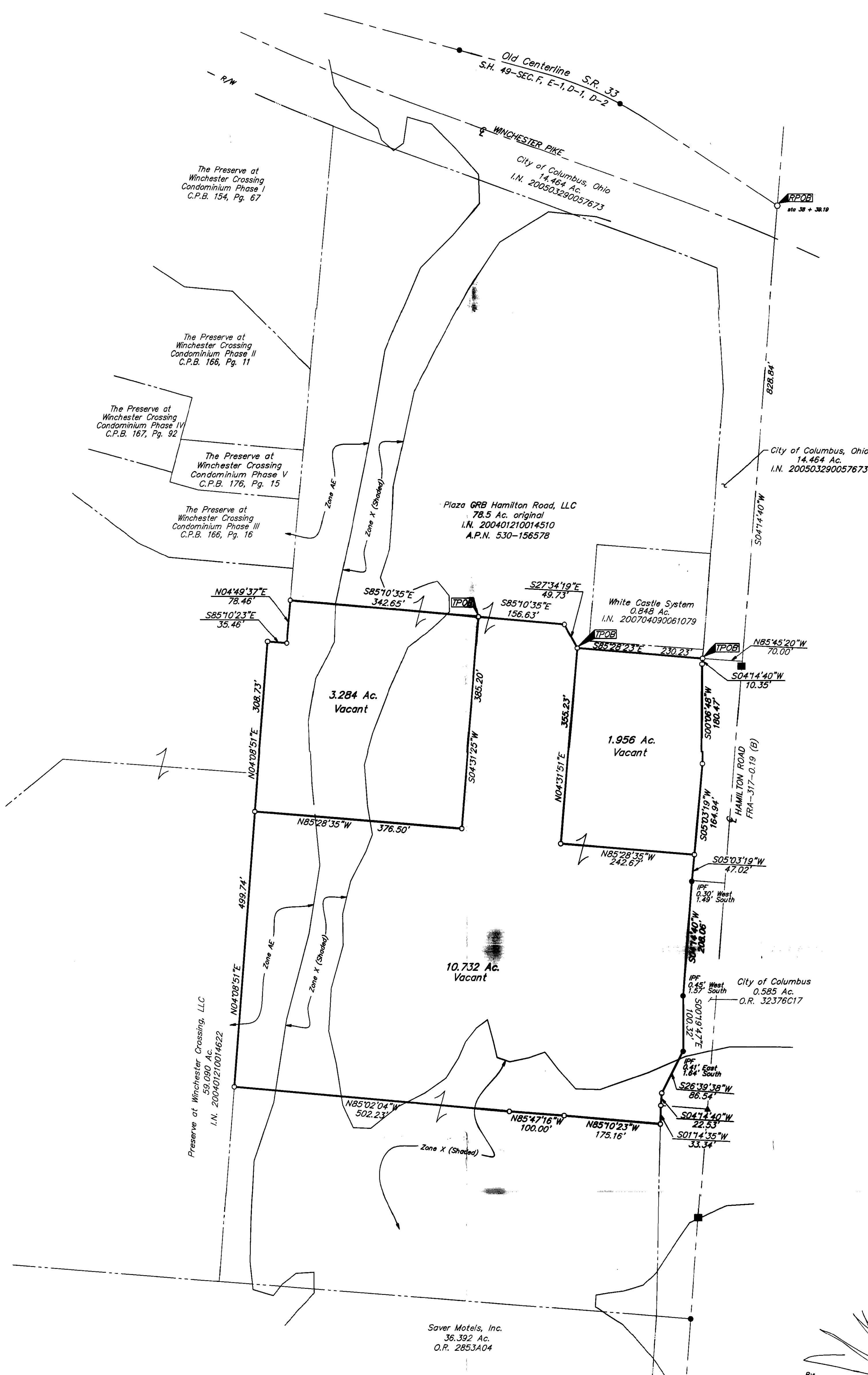
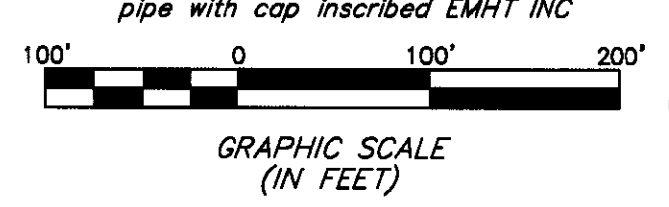


**SURVEY OF ACREAGE PARCEL**  
**SECTION 9, TOWNSHIP 11, RANGE 21**  
**CONGRESS LANDS**  
**CITY OF COLUMBUS, FRANKLIN COUNTY, OHIO**




- = STONE FND.
  - = MON. FND.
  - = I.P. FND.
  - = I.P. SET
  - = MAG. NAIL FND.
  - = MAG. NAIL SET
  - ▲ = R.R. SPK. FND.
  - △ = R.R. SPK. SET
  - = P.K. NAIL FND.
- I.P. Set are 1 3/16" I.D. iron pipe with cap inscribed EMHT INC



According to the Federal Emergency Management Agency's Flood Insurance Rate map (dated August, 02, 1995), the subject parcels shown hereon lies within Zone AE (areas inundated by 100-year flood), Zone X (areas of 500-year flood; areas of 100-year flood with average depths of less than 1 foot or with drainage areas less than 1 square mile, and areas protected by levees from 100-year flood) and Zone X (areas outside 500-year flood plain), Community Panel No. 39049C0270 G.

**BASIS OF BEARINGS:** Bearings are based on North 57°12'05" West, between monuments FRANK 132 and 32, per the Ohio State Plane Coordinate System NAD83, South Zone (1986 adjustment).

By:   
Professional Surveyor No. 8250

STATE OF OHIO

EDWARD M. RISER

8250

PROFESSIONAL SURVEYOR

<b>EMHT</b>		Date: June 29, 2007	
Evans, Mechwart, Hambleton & Tilton, Inc. Engineers + Surveyors + Planners + Scientists 5850 New Albany Road, Columbus, OH 43254 Phone: 614.775.4500 Fax: 614.775.4850		Scale: 1" = 100'	
		Job No: 2007-1124	
		Sheet: 1 of 1	
<b>REVISIONS</b>			
MARK	DATE	DESCRIPTION	
JRM	8/14/07	Lat Lines Changed per clients request	

\\CAMDATA1\SHARE\PROJECT\20071124\DWG\71124BY.DWG-C2M38 PORTRAIT- - NO XREFS - LAST SAVED BY JMASTON [9/26/2007 12:36:24 PM] - PLOTTED BY JMASTON [9/26/2007 12:36:24 PM]