

# ADA RAMP/SIDEWALK FEE SIMPLE DOMINICAN FATHERS PRIORY OF ST. THOMAS AQUINAS

SECTION 9, TOWNSHIP 5, RANGE 22, REFUGEE LANDS  
CITY OF COLUMBUS  
FRANKLIN COUNTY, OHIO



ROBERT NEIL'S ADDITION OF  
INLOTS AND OUTLOTS  
PLAT BOOK 1, PAGE 98

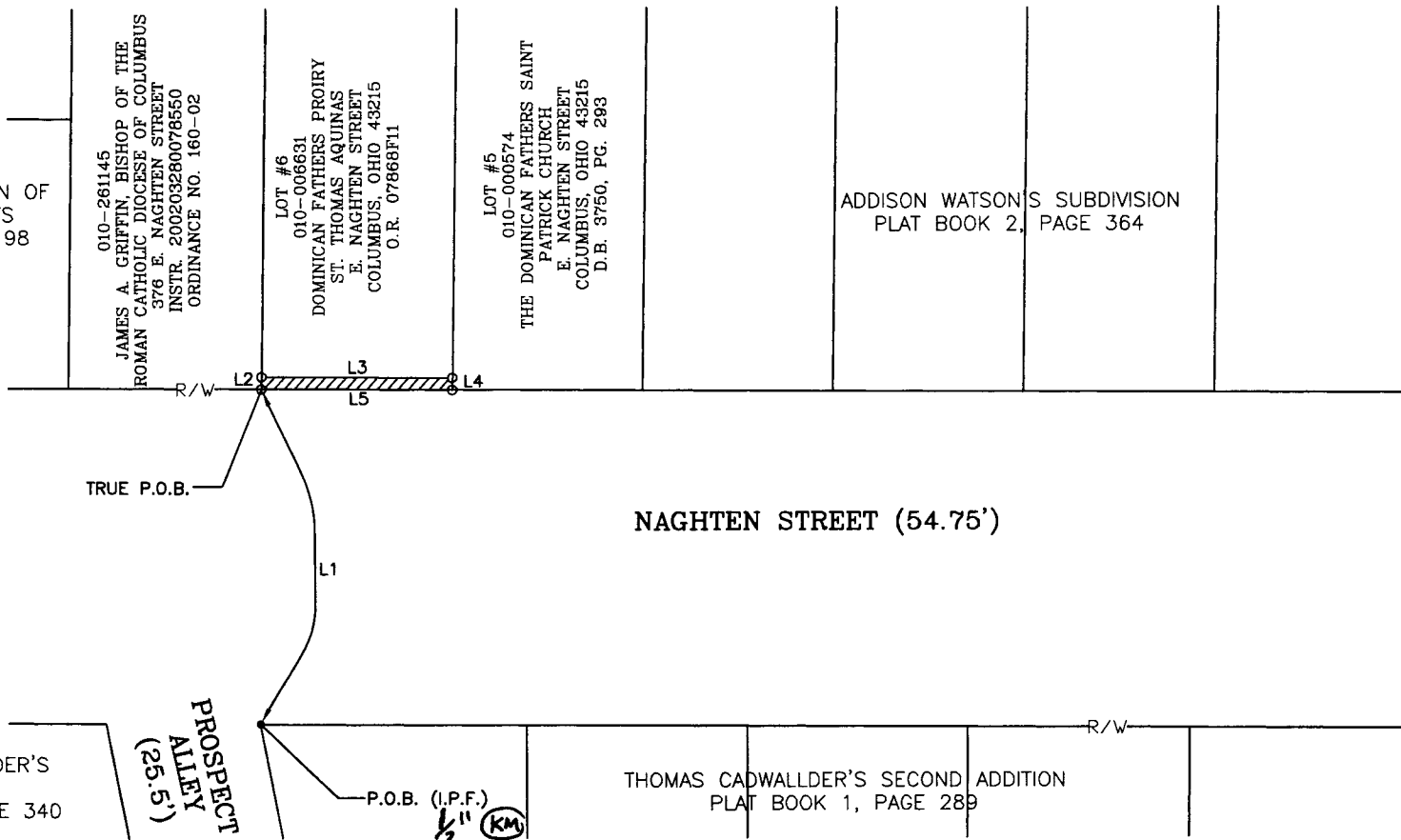
010-261145  
JAMES A. GRIFFIN, BISHOP OF THE  
ROMAN CATHOLIC DIOCESE OF COLUMBUS  
376 E. NAGHTEN STREET  
INSTR. 200203280078550  
ORDINANCE NO. 160-02

LOT #6  
010-006631  
DOMINICAN FATHERS PRIORY  
ST. THOMAS AQUINAS  
E. NAGHTEN STREET  
COLUMBUS, OHIO 43215  
O.R. 07868F11

LOT #5  
010-006574  
THE DOMINICAN FATHERS SAINT  
PATRICK CHURCH  
E. NAGHTEN STREET  
COLUMBUS, OHIO 43215  
D.B. 3750, PG. 288

ADDISON WATSON'S SUBDIVISION  
PLAT BOOK 2, PAGE 364

LINE	DIRECTION	DISTANCE
L1	N 03°18'07" E	54.75'
L2	N 03°44'12" E	2.00'
L3	S 86°41'35" E	31.00'
L4	S 03°44'12" W	2.00'
L5	N 86°41'35" W	31.00'



THOMAS CADWALLDER'S  
RESERVE  
PLAT BOOK 1, PAGE 340

THOMAS CADWALLDER'S SECOND ADDITION  
PLAT BOOK 1, PAGE 289

CLEVELAND AVENUE (60')

RECEIVED

SEP 20 2007

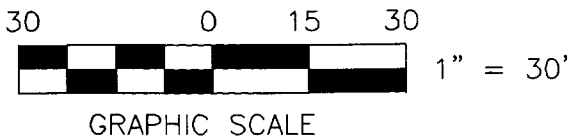
Franklin County Engineer  
Dean C. Ringler, P.E., P.S.



- IRON PIN FOUND (I.P.F.)
- MONUMENT SET

**BASIS OF BEARINGS:**

Bearings are based on the Ohio State Plane Coordinate System, South Zone, NAD83 (1986 Adjustment). Control for bearings was from coordinates of Monuments COC13-83 and COC18-83, having a bearing of North 68°31'54" East, established by Franklin County Engineering Department, using Global Positioning System procedures and equipment.



*Karim S. Mohamed* 9/17/07  
KARIM S. MOHAMED  
REG. SURVEYOR NO. 7947  
DATE



RIBWAY ENGINEERING GROUP, INC.  
300 E. BROAD ST. SUITE 500  
COLUMBUS, OHIO 43215  
PH. NO. (614) 221-6009  
FX. NO. (614) 221-9089