

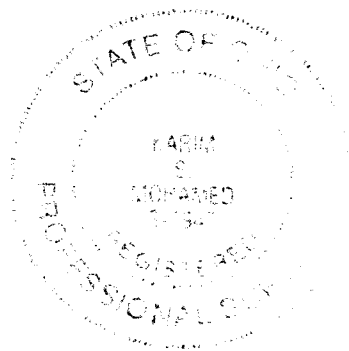
ADA RAMP/SIDEWALK FEE SIMPLE MICHAEL R. LLANEZA PROPERTY

SECTION 9, TOWNSHIP 5, RANGE 22, REFUGEE LANDS
CITY OF COLUMBUS
FRANKLIN COUNTY, OHIO

RECEIVED

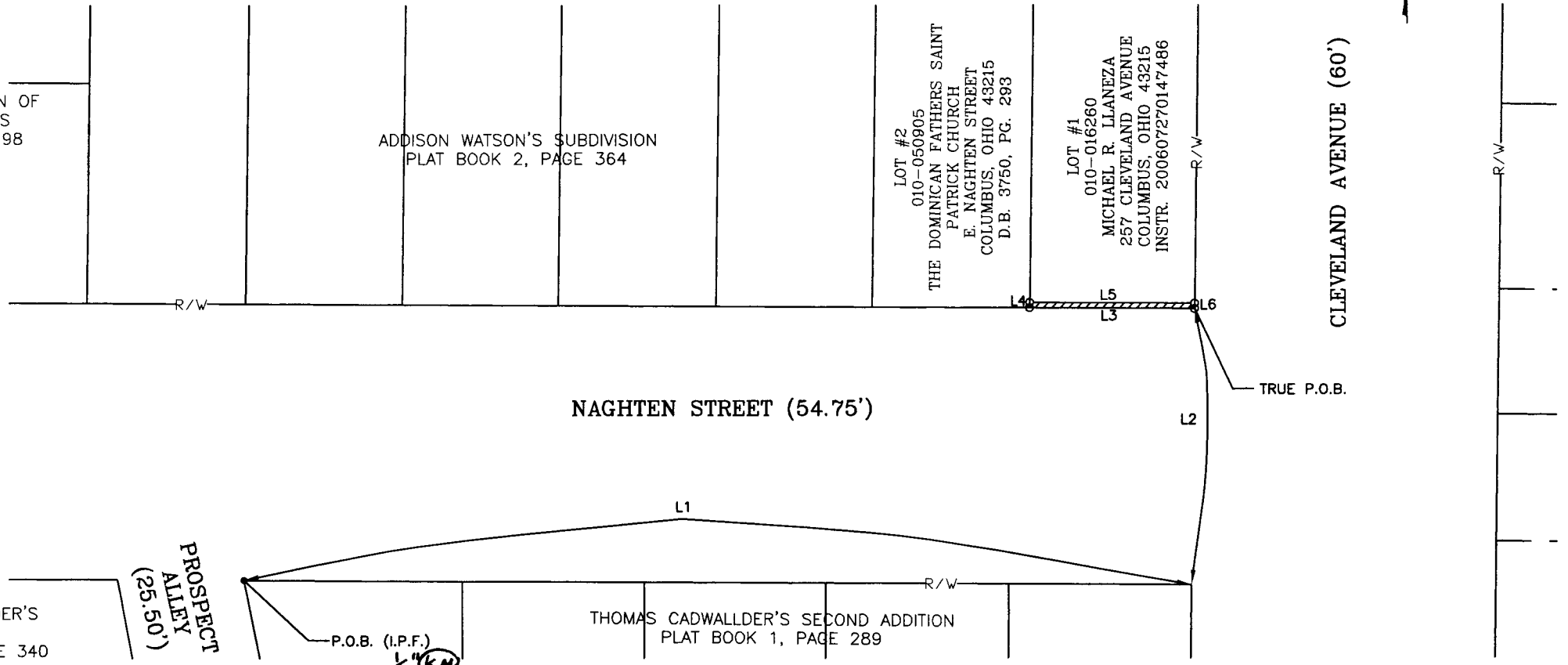
SEP 20 2007

Franklin County Engineer
Dean C. Pincio P.E., R.S.



ROBERT NEIL'S ADDITION OF
INLOTS AND OUTLOTS
PLAT BOOK 1, PAGE 98

LINE	DIRECTION	DISTANCE
L1	S 86°41'35" E	187.09'
L2	N 03°44'12" E	54.75'
L3	N 86°41'35" W	32.51'
L4	N 03°44'12" E	1.08'
L5	S 86°41'35" E	32.51'
L6	S 03°44'12" W	1.08'



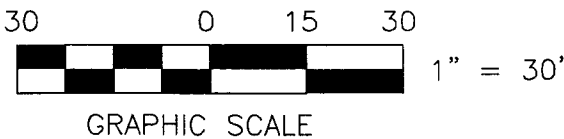
- IRON PIN FOUND (I.P.F.)
- MONUMENT SET

THOMAS CADWALLDER'S
RESERVE
PLAT BOOK 1, PAGE 340

THOMAS CADWALLDER'S SECOND ADDITION
PLAT BOOK 1, PAGE 289

BASIS OF BEARINGS:

Bearings are based on the Ohio State Plane Coordinate System, South Zone, NAD83 (1986 Adjustment). Control for bearings was from coordinates of Monuments COC13-83 and COC18-83, having a bearing of North 68°31'54" East, established by Franklin County Engineering Department, using Global Positioning System procedures and equipment.



Karim S. Mohamed 9/17/07
KARIM S. MOHAMED
REG. SURVEYOR NO. 7947
DATE



RIBWAY ENGINEERING GROUP, INC.
300 E. BROAD ST. SUITE 500
COLUMBUS, OHIO 43215
PH. NO. (614) 221-6009
FX. NO. (614) 221-9089