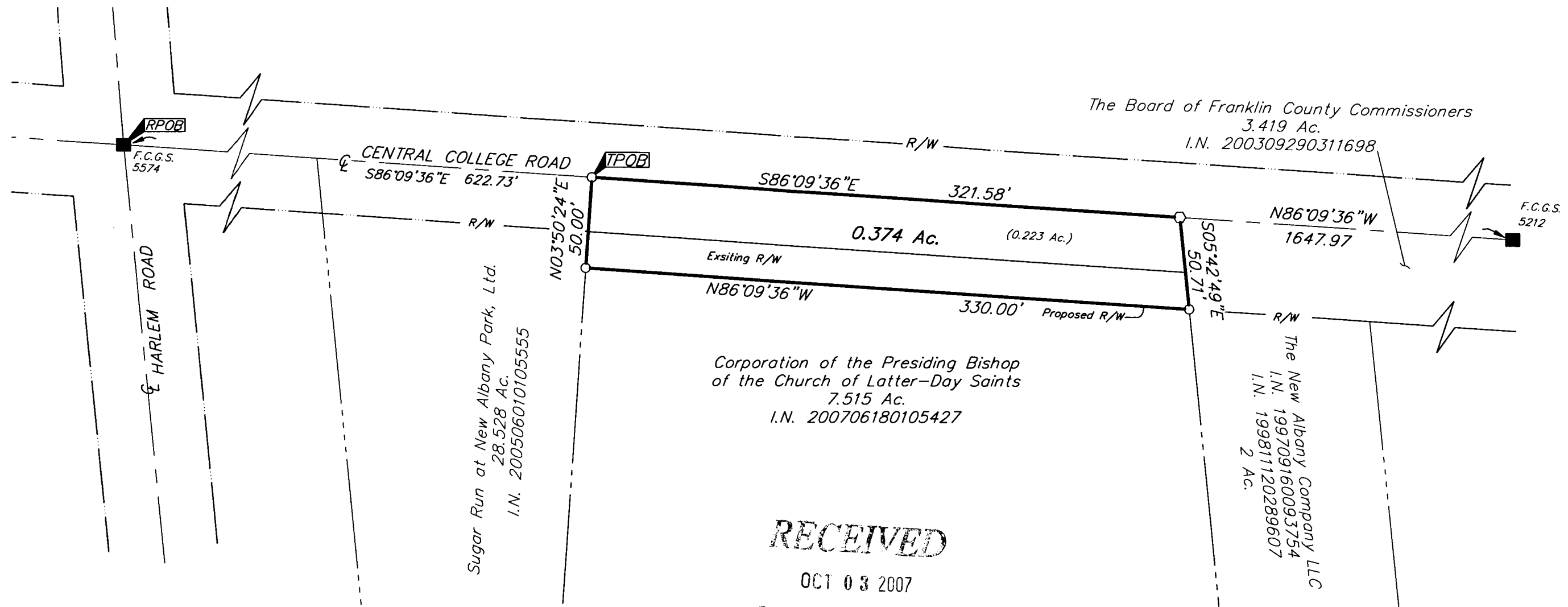


RIGHT-OF-WAY EXHIBIT
SECTION 14, QUARTER TOWNSHIP 2, TOWNSHIP 2, RANGE 16
UNITED STATES MILITARY LANDS
CITY OF COLUMBUS, FRANKLIN COUNTY, OHIO

Date: October 3, 2007

Scale: 1" = 60'

Job No: 2007-1616



RECEIVED
 OCT 03 2007
 Franklin County Engineer
 Dean C. Pingle, RE, RS

- = STONE FND.
- = MON. FND.
- = I.P. FND.
- = I.P. SET
- = MAG. NAIL FND.
- = MAG. NAIL SET
- ▲ = R.R. SPK. FND.
- △ = R.R. SPK. SET
- = P.K. NAIL FND.

I.P. Set are 13/16" I.D. iron pipe with cap inscribed EMHT INC



GRAPHIC SCALE
(IN FEET)

BASIS OF BEARINGS: Bearings are based on the Ohio State Plane Coordinate System as per NAD83 (1986 Adjustment). Control for bearings was from coordinates of monuments Frank 5574 and Frank 5113, with Central College Road having a bearing of South 86° 09' 36" East, established by the Franklin County Engineering Department, using Global Positioning System procedures and equipment.

10/3/07
 By _____
 Professional Surveyor No. 8250