

SURVEY DATA:

6-7-B

HORIZONTAL DATUM — BEARINGS BASED UPON THE OHIO STATE PLANE COORDINATE SYSTEM, SOUTH ZONE, NAD83 (CORS). SAID BEARINGS ORIGINATED FROM SAID COORDINATE SYSTEM BY GPS OBSERVATIONS AND OBSERVATIONS OF SELECTED STATIONS IN THE NATIONAL GEODETIC SURVEY CONTINUOUSLY OPERATING REFERENCE STATION (NGS CORS) NETWORK. THE BEARING FROM CORS STATION COLB TO CORS STATION OHUN, BEING NORTH FORTY-ONE DEGREES ONE MINUTE FIFTY-SEVEN SECONDS WEST (N41°01'57"W) IS DESIGNATED THE "BASIS OF BEARING" FOR THIS SURVEY.

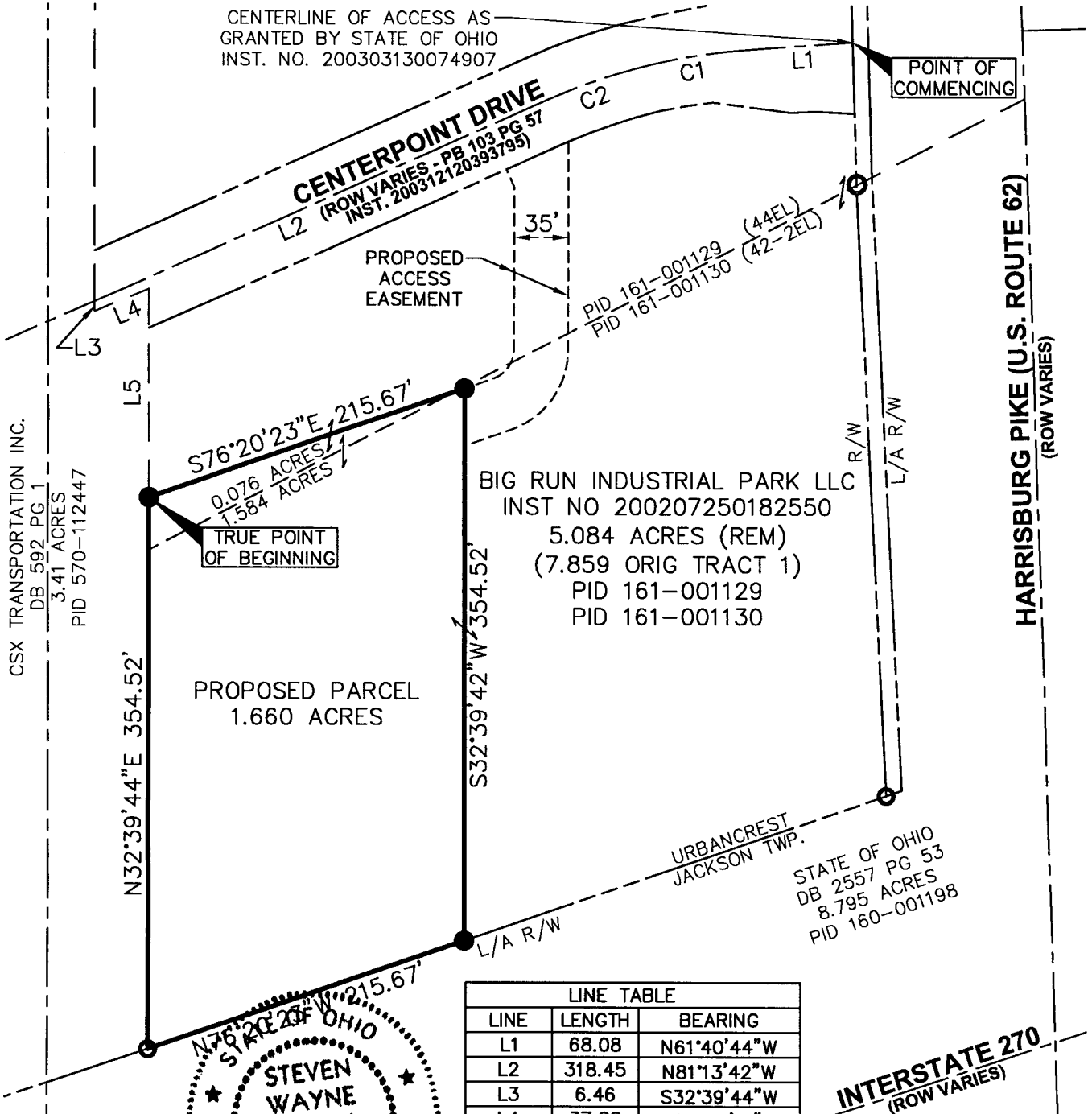
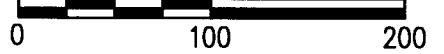
RECEIVED

SEP 20 2007

Franklin County Engineer
Dean C. Finglo, P.E., P.S.

IRON PINS SET ARE 5/8" REBAR, 30" IN LENGTH, WITH A PLASTIC PLUG PLACED ON TOP INSCRIBED WITH THE NAME "WOOLPERT INC", UNLESS OTHERWISE NOTED. ALL MONUMENTS FOUND ARE IN GOOD CONDITION UNLESS OTHERWISE NOTED.

SCALE: 1"=100'



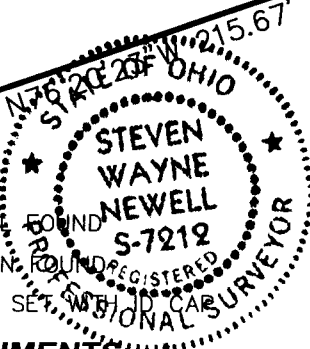
BIG RUN INDUSTRIAL PARK LLC
INST NO 200207250182550
5.084 ACRES (REM)
(7.859 ORIG TRACT 1)
PID 161-001129
PID 161-001130

CSX TRANSPORTATION INC.
DB 592 PG 1
3.41 ACRES
PID 570-112447

STATE OF OHIO
DB 2557 PG 53
8.795 ACRES
PID 160-001198

LINE TABLE		
LINE	LENGTH	BEARING
L1	68.08	N61°40'44"W
L2	318.45	N81°13'42"W
L3	6.46	S32°39'44"W
L4	37.88	S79°53'11"E
L5	134.18	S32°39'44"W

CURVE TABLE					
CURVE	RADIUS	LENGTH	CHORD	BEARING	DELTA
C1	359.14	72.26	72.14	N66°54'59"W	11°31'42"
C2	395.14	62.59	62.52	N76°41'27"W	9°04'30"



- ⊗ PK NAIL FOUND
- IRON PIN FOUND
- 5/8" IRON PIN SET

REFERENCE DOCUMENTS:

INST. NO. 200207250182550
PB 103 PG 57
ODOT FRA-270-6.09S

CERTIFICATION:

THIS DRAWING BASED ON A SURVEY PERFORMED BY WOOLPERT, INC. IN FEBRUARY, 2007.

WOOLPERT, INC.
[Signature]
STEVEN W. NEWELL DATE 09/12/07
OHIO REGISTERED PROFESSIONAL SURVEYOR NO. 7212

SURVEY EXHIBIT
1.660 ACRES
PT. VMS LOT NUMBER 5745
VILLAGE OF URBANCREST, FRANKLIN COUNTY, OHIO



2780 AIRPORT DRIVE
SUITE 140
COLUMBUS, OHIO 43219
PHONE: 614.476.6000
FAX: 614.476.6225

DES TMC PROJECT
DRT TMC NO. 66539
CKD SWN DATE 09/14/2007
SHEET 1 OF 1