



Evans, Mechwart, Hambleton & Tilton, Inc.  
 Engineers • Surveyors • Planners • Scientists  
 5500 New Albany Road, Columbus, OH 43054  
 Phone: 614.775.4500 Fax: 614.775.4800

**RIGHT-OF-WAY EXHIBIT AND ENCROACHMENT EASEMENT**  
**SECTION 8, TOWNSHIP 5, RANGE 22**  
**REFUGEE LANDS**  
 CITY OF COLUMBUS, FRANKLIN COUNTY, OHIO

Date: July 10, 2007

Scale: 1" = 20'

Job No: 2007-0250

M C M X X V I

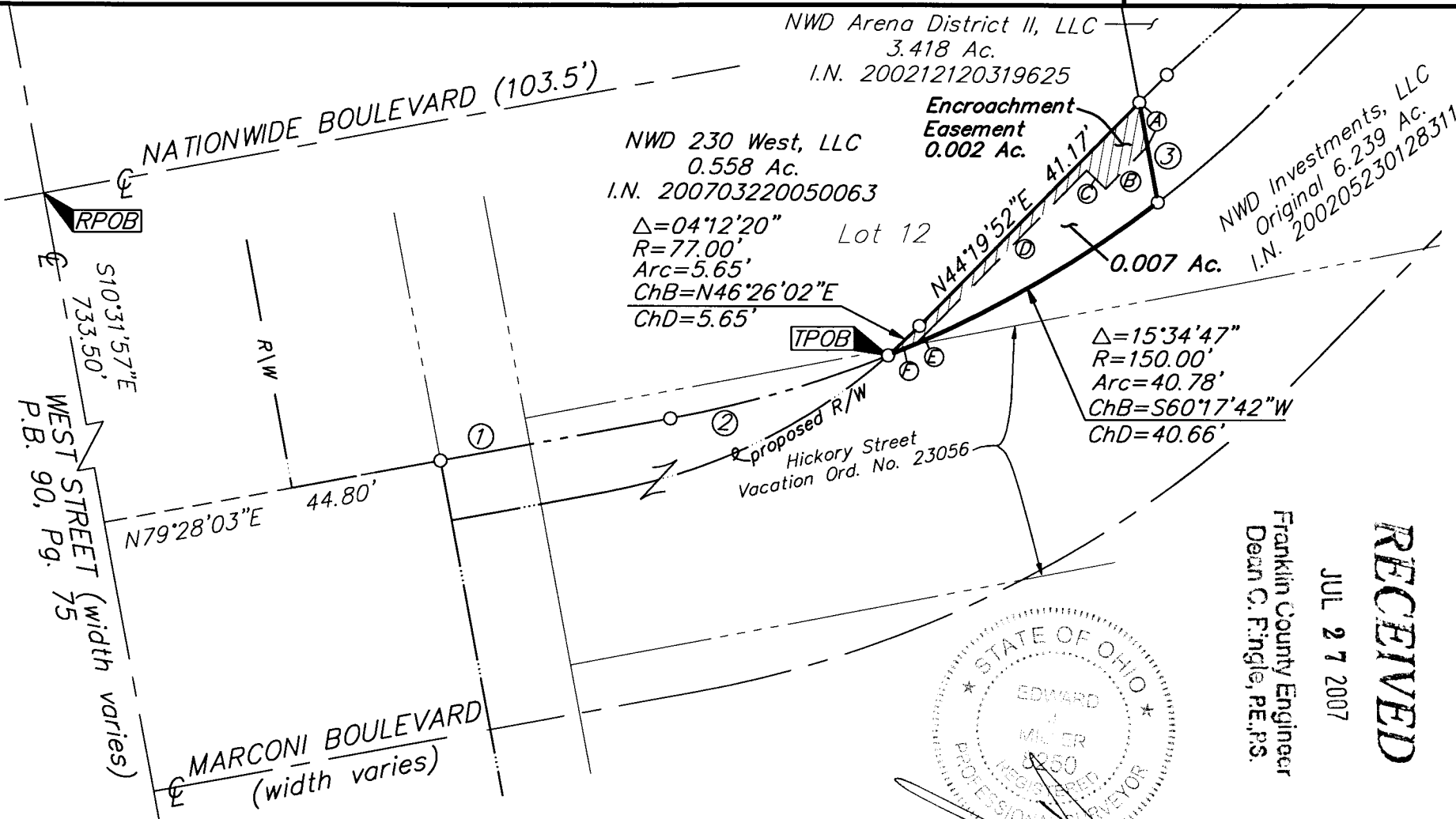
- ① N79°28'03"E 30.70'
- ② Δ=11°22'57" R=150.00' Arc=29.80' ChB=N73°46'34"E ChD=29.75'
- ③ S10°31'57"E 13.42'
- Ⓐ S10°31'57"E 5.94'
- Ⓑ S44°27'54"W 7.84'
- Ⓒ N45°31'58"W 3.51'
- Ⓓ S44°19'52"W 29.92'
- Ⓔ Δ=01°31'54" R=78.33' Arc=2.09' ChB=S45°05'49"W ChD=2.09'
- Ⓕ Δ=01°28'28" R=150.00' Arc=3.86' ChB=S67°20'52"W ChD=3.86'

- = STONE FND.
- = MON. FND.
- = I.P. FND.
- = I.P. SET
- ◆ = MAG. NAIL FND.
- = MAG. NAIL SET
- ▲ = R.R. SPK. FND.
- Δ = R.R. SPK. SET
- ◆ = P.K. NAIL FND.

I.P. Set are 13/16" I.D. iron pipe with cap inscribed EMHT INC

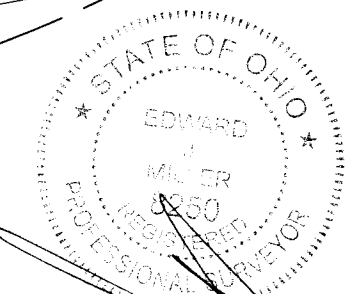


GRAPHIC SCALE (IN FEET)



**BASIS OF BEARINGS:**

The bearings shown hereon are based on the north line of Maple Street being South 89°08'05" East as per Governor's Deed to the City of Columbus, Official Record 30337 104, Recorder's Office Franklin County, Ohio.



RECEIVED  
 JUL 27 2007  
 Franklin County Engineer  
 Dean C. Fingle, PE, PS.

By \_\_\_\_\_  
 Professional Surveyor No. 8250

\\CHMDATA1\SURVEY\PROJECT\20070250\DWG\70250BU7.DWG-LEGAL LANDS - NO XREFS - LAST SAVED BY TBAXTER (7/10/2007 7:55:08 AM) - PLOTTED BY TBAXTER (7/10/2007 9:31:20 AM)