

EMHT

Evans, Mechwart, Hambleton & Tilton, Inc.
Engineers • Surveyors • Planners • Scientists
5500 New Albany Road, Columbus, OH 43054
Phone: 614.775.4500 Fax: 614.775.4800

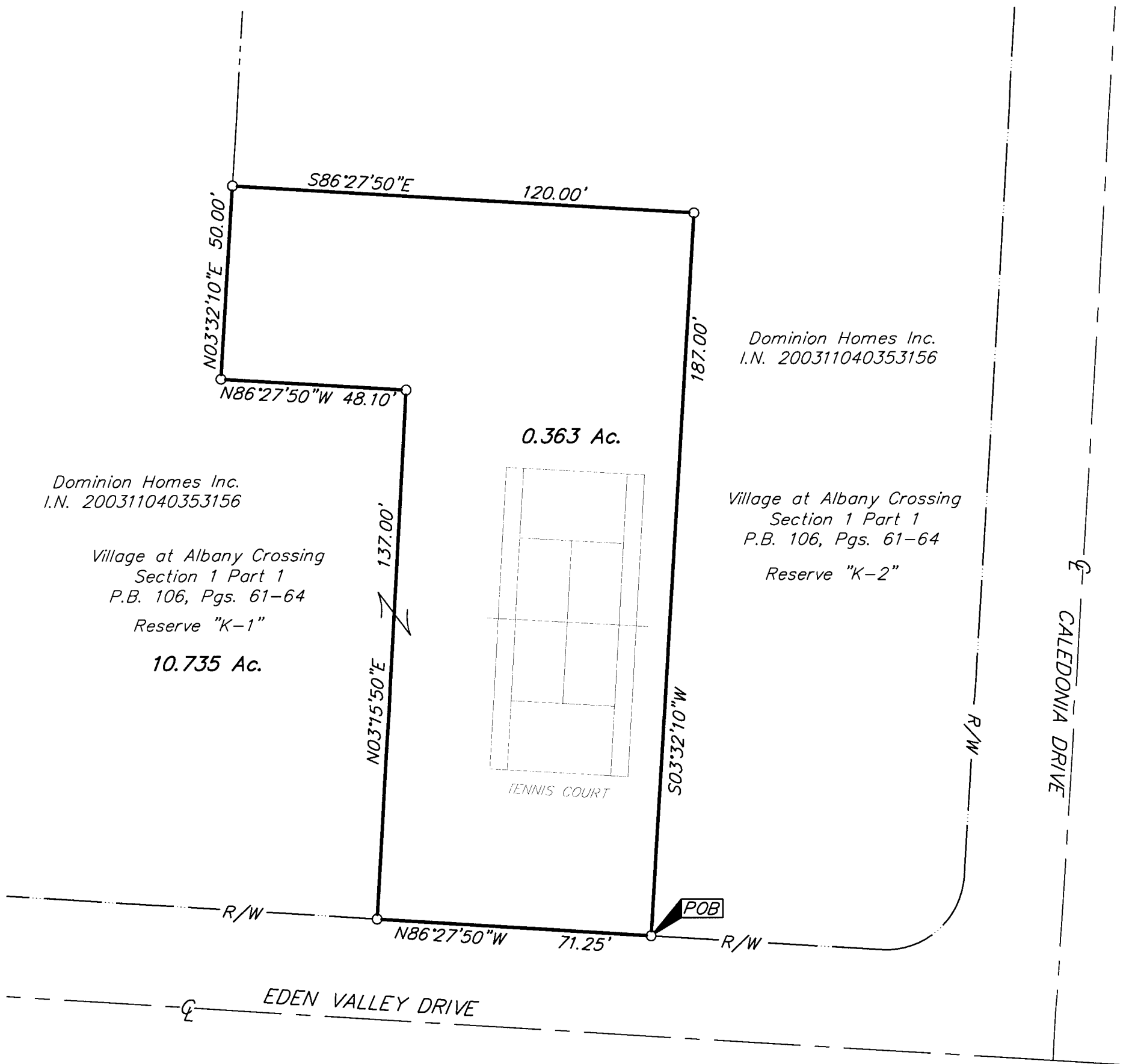
SURVEY OF ACREAGE PARCEL SECTION 15, TOWNSHIP 2, RANGE 16 UNITED STATES MILITARY LANDS CITY OF COLUMBUS, FRANKLIN COUNTY, OHIO

Date: March 6, 2006

Scale: 1" = 30'

Job No: 2006-0383

M C M X X V I



- = STONE FND.
- = MON. FND.
- = I.P. FND.
- = I.P. SET
- = MAG. NAIL FND.
- = MAG. NAIL SET
- ▲ = R.R. SPK. FND.
- △ = R.R. SPK. SET
- ◆ = P.K. NAIL FND.

I.P. Set are 13/16" I.D. iron pipe with cap inscribed EMHT INC



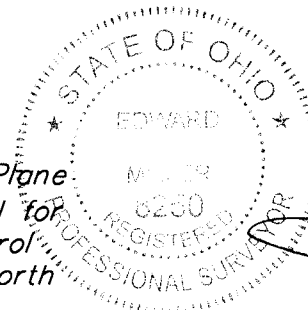
GRAPHIC SCALE (IN FEET)

BASIS OF BEARINGS: Bearings are based on the Ohio State Plane Coordinate System, as per NAD83 (1986 Adjustment). Control for bearings was from coordinates of Franklin County Survey Control Monuments, 8824 and 8825, having a calculated bearing of North 86°29'28" West, established by the Franklin County Engineering Department, using Global Positioning System procedures and equipment.

RECEIVED

AUG 17 2007

Franklin County Engineer
Dean C. Rindie, PE, PS



By 
Professional Surveyor No. 8250

\\CMF\DATA1\SURVEY\PROJECT\20060383\DWG\60383BVDWG<11X17 PORTRAIT CANNON> - NO XREFS - LAST SAVED BY JMASTON [8/17/2007 7:15:24 AM] - PLOTTED BY JMASTON [8/17/2007 7:15:24 AM]