

MS CONSULTANTS, INC.

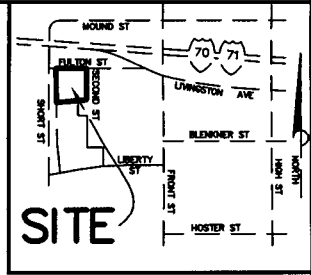
G-2-F

(614) 898-7100

2221 SCHROCK ROAD COLUMBUS, OHIO 43229

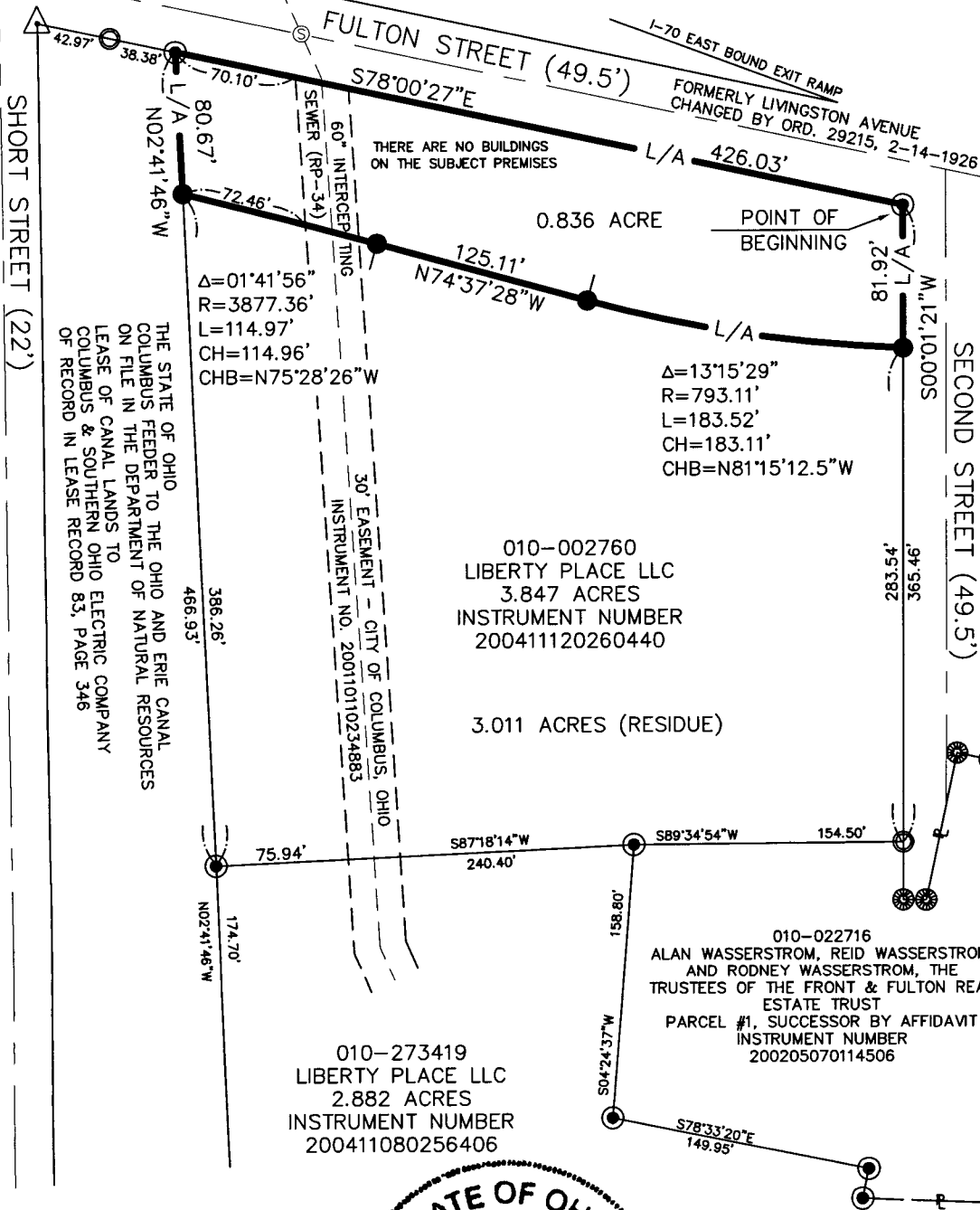
FAX (614) 898-7570

SITUATED IN THE STATE OF OHIO, COUNTY OF FRANKLIN, CITY OF COLUMBUS, IN HALF SECTION 27, TOWNSHIP 5, RANGE 22, REFUGEE LANDS, BEING A 0.836 ACRE TRACT OF LAND ALL OUT OF THAT 3.847 ACRE TRACT AS DESCRIBED IN A DEED TO LIBERTY PLACE LLC, AN OHIO LIMITED LIABILITY COMPANY, OF RECORD IN INSTRUMENT NUMBER 200411120260440, ON FILE IN THE RECORDER'S OFFICE, FRANKLIN COUNTY, OHIO.



**SITE**

LOCATION MAP  
—NOT TO SCALE—



010-002760  
LIBERTY PLACE LLC  
3.847 ACRES  
INSTRUMENT NUMBER  
200411120260440

3.011 ACRES (RESIDUE)

010-273419  
LIBERTY PLACE LLC  
2.882 ACRES  
INSTRUMENT NUMBER  
200411080256406

010-022716  
ALAN WASSERSTROM, REID WASSERSTROM,  
AND RODNEY WASSERSTROM, THE  
TRUSTEES OF THE FRONT & FULTON REAL  
ESTATE TRUST  
PARCEL #1, SUCCESSOR BY AFFIDAVIT  
INSTRUMENT NUMBER  
200205070114506

Franklin County Engineer  
Dean C. Finkle P.E., P.S.

AUG 02 2007

RECEIVED

**LEGEND**

- 5/8" REBAR FOUND—PLASTIC CAP "7159—MSCONSULTANTS"
- 3/4" IRON PIPE FOUND, NO CAP
- △ RAILROAD SPIKE FOUND
- ⊗ COTTON GIN SPINDLE FOUND
- 5/8" REBAR SET—PLASTIC CAP "7159—MSCONSULTANTS"

L/A LIMITED ACCESS RIGHT OF WAY

**BASIS OF BEARING**

FOR THE PURPOSE OF THIS PLAT, A BEARING OF SOUTH 78°00'27" EAST WAS USED ON THE SOUTHERLY RIGHT-OF-WAY LINE OF FULTON STREET, AS DESCRIBED IN A DEED TO LIBERTY PLACE LLC, OF RECORD IN INSTRUMENT NUMBER 200411120260440, ON FILE IN THE RECORDER'S OFFICE, FRANKLIN COUNTY, OHIO.



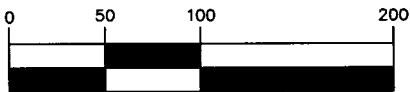
THE FOREGOING PLAT WAS PREPARED FROM AN ACTUAL FIELD SURVEY OF THE PREMISIS BY MS CONSULTANTS, INC., UNDER THE DIRECT SUPERVISION OF JOHN L. PRICE, REGISTERED PROFESSIONAL SURVEYOR NO. 7159. IRON PINS SET ARE 5/8" REBAR, 30" LONG BEARING A YELLOW PLASTIC CAP STAMPED "7159—MS CONSULTANTS".

*John L. Price*  
JOHN L. PRICE

7/31/2007

PROFESSIONAL SURVEYOR NO. 7159

Revisions  
07/30/07  
01/12/06  
12/30/05



1 inch = 100 ft.

24-352 (60-06634-00)